

Living Walls
Two kilometres
of artworks:

- 1 Ben Eine
The Review
- 2 David Shillinglaw
Tapestry
- 3 Mark McClure
Uphoarding
- 4 Jo Peel
Meet Me In The City
- 5 Your Ad Here



LIVING WALLS

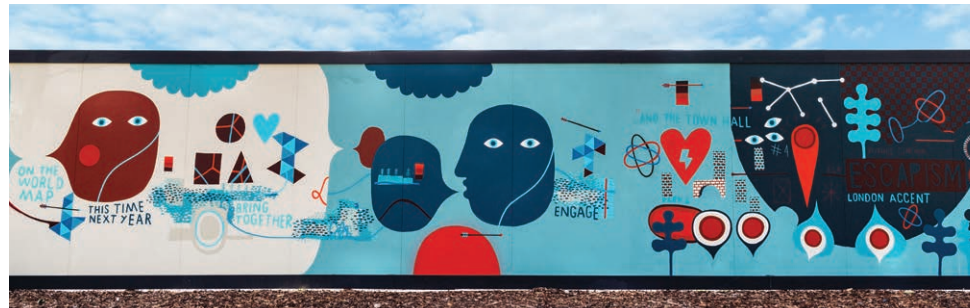
Two kilometres of artworks created for Queen Elizabeth Olympic Park hoardings with the active participation of local communities, businesses and schools over one year.



1. Ben Eine The Review

Prolific and enigmatic street artist Ben Eine creates his largest mural yet, 'The Review', stretching a monumental 400 metres and bringing together the past, present and future.

Eine has taken inspiration from the proposed plans for a new cultural quarter on the Park and painted adjoining adjectives in his iconic trademarked circus font, merging descriptions and anticipation of what was here, and what is still to come. Eine's work already hangs in the White House, famously gifted by David Cameron to Barack Obama in 2010.



2. David Shillinglaw Tapestry

This modern day interpretation of the Bayeux tapestry represents the story of this changing area of east London, as told through the eyes of the local community.

This intergenerational project weaves together the community's journey from the announcement that London had won the bid to host the Olympic and Paralympic Games, to the end of the London 2012 Games and beyond. Artist David Shillinglaw brings to life stories, memories and interviews through his iconic symbols and intricate details, connecting the Park to the wider world and telling the story of Queen Elizabeth Olympic Park through art.



3. Mark McClure Uphoarding

Sustainability, re-cycling and up-cycling are a growing movement in our modern world, and are celebrated in this artwork which reclaims the term 'hoarding'.

Artist McClure exposes the process of transforming salvaged materials into something of beauty and use in the 210 metres of this work. Along its length of geometric wooden tiles, Uphoarding features a series of ten intricate 'beacon' artworks, like vertical sculptures, which have been crafted from wood sourced from Queen Elizabeth Olympic Park during its transformation and from local businesses.



4. Jo Peel Meet Me In The City

This significant new commission from artist Jo Peel realises her signature cityscapes and paintings of local landmarks in three dimensions, incorporating architectural elements.

Buildings emerge from the painted lines, and if you look closely through the windows, other views appear. Meet Me in the City is an impressive depiction of both a love story lost in the complexity of the growing city, and the ever-evolving area of Hackney Wick across the canal. An animation of the mural tells the love story through lost messages and passing ships in an ode to the perfection of an imagined relationship. It can be seen at: livingwalls-london.com



5. Your Ad Here Various Artists

Your Ad Here is a celebration of the local independent businesses that are such an integral part of east London's community and economy.

Local butchers, bakers, corner shops and hairdressers had their own adverts designed for this wide-reaching initiative where 35 artists were partnered with 35 local businesses. Launched in April 2014 to mark the full re-opening of the Park, these artist designed adverts installed in various sites celebrate the individual characters that make up the rich and diverse local economy that surrounds us.

Aryubi Express Genica Ear
Barnes & Webb Olivia Whitworth
Bikeworks Year 9 Pupils, Kingsford Community School
Blackhorse Workshop Rosie Eveleigh
Charlie's Barbers Josh McKenna
Choosing Keeping David Batchelor
Community Links Benjamin Murphy
E.Brooks & Sons Fruiterers Hannah Dickins
E.W.Moore & Sons James Brown
Finger Licking Lucas Price
Hardwick Textiles Karen Colley
Hornbeam Café Damien Weighill
Hoxton Trust Colin Priest
La Forchetta Lauren Godfrey
Let's Roll Year 9 Pupils, Kingsford Community School
London Coaching Foundation Antony Ward
Lot One Ten Sebastian Harding
Mother Studios Marie-Louise Jones
Mother's Hub Ruth Ewan

Nana Café Nat & Lew
Newham Bookshop Bridget Meyne
Rinkoff's Bakery Uddin & Elsey
Rockalily Cuts Claire Guiller
Smallholders Bruce Ingram
Snap Paul Pateman
Star Hand Car Wash Samara Scott
Stepney City Farm Mason London
Stour Space Nick Creber
The Butcher's Shop Pixel Press
The Hackney Pearl We Are Laura
The Railway Tavern Jon Barker
The Who Shop Takayo Akiyama
Toor Supermarket Lucy Woodhouse
Trevi Restaurant Jeremy Deller
Turning Earth Ceramics Ian Giles
Vinyl Pimp Begoña Toledo
Voodoo Ray's Zak Keene
We Love Trainers Ashley McCormick
William Morris Gallery Jeremy Deller
Wilton's Way Year 9 Pupils, Kingsford Community School

Living Walls is an ambitious art programme for Queen Elizabeth Olympic Park, stretching over two kilometres in nine different locations and featuring 40 new artworks specifically created for the Park. Crafted with the active participation of residents, schools, and organisations from the local community, these works bring a new epic scale to street and mural art.

Commissioned artists include

Ben Eine, David Shillinglaw, Mark McClure, Jo Peel, Jeremy Deller, Ruth Ewan, David Batchelor among others.

Living Walls has been commissioned by Queen Elizabeth Olympic Park as part of our Arts and Culture programme and curated and produced by Moniker Projects and Create.

FIND OUT MORE:

queenelizabetholympicpark.co.uk
livingwalls-london.com
your-ad-here.co.uk

Tweet about your visit using @noordinarypark

Photography - Nick Tucker Photography & Kristophe Hofford (Ben Eine image)

Design - Mark McClure



LIVING WALLS



MONIKER PROJECTS

CREATE