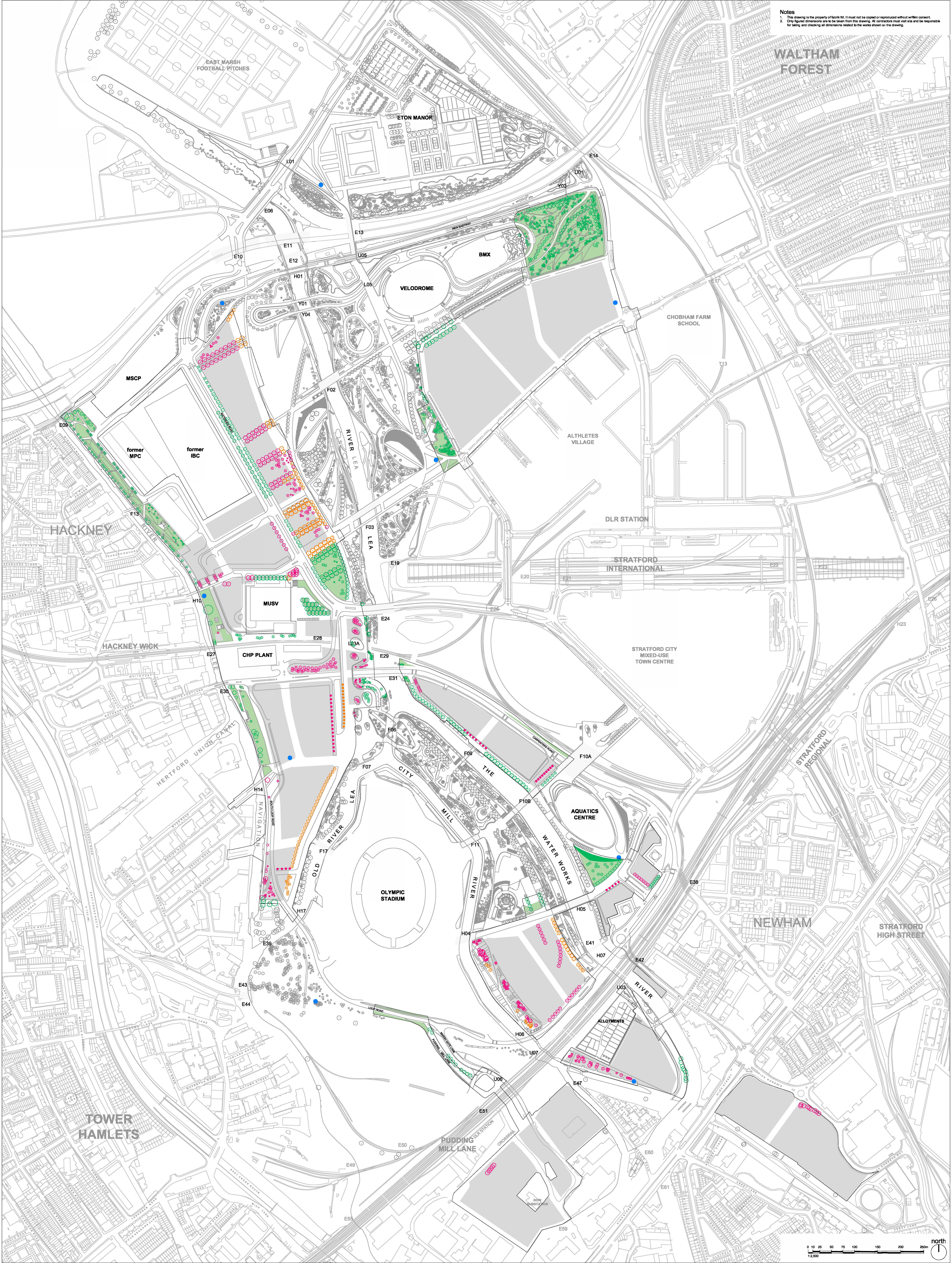





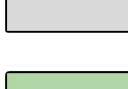




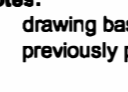
NOTES  
1. This drawing is the property of fabrik. It must not be copied or reproduced without written consent.  
2. Only figured dimensions are to be taken from this drawing. All contractors must visit site and be responsible for taking and checking all dimensions related to the works shown on the drawing.



fabrik

First Floor  
4-8 Emerson Street  
London  
SE1 1DU  
T: 0207 620 1453  
E: london@fabrik.com  
W: www.fabrik.com

LEGEND

-  LCS PLANNING APPLICATION BOUNDARY
-  EXISTING ENTRANCE MARKER TREE
-  EXISTING TREE OUTSIDE OF LCS BOUNDARY
-  LCS DEVELOPMENT PARCEL
-  EXISTING TREE TO BE SAFEGUARDED
-  EXISTING TREE TO BE RETAINED, RELOCATED OR PROVIDED ELSEWHERE
-  BIODIVERSITY ACTION PLAN HABITAT TO BE SAFEGUARDED
-  EXISTING TREE TO BE RETAINED, REMOVED OR RELOCATED PENDING FUTURE DEVELOPMENT DETAIL DESIGN
-  Notes: drawing based on QEOP Safeguarded Tree LC207-MPO-PWD-A-DSP-1000 previously prepared by LDA

PL04 02.04.19 Park Privet Early Works Amendments  
No. Date Reason  
External References:  
• JUL19 Phase2/02/19 East Wick Village Phase 2, Newham/Adm/Docs/received/LD017109 safeguarded trees (update 196 on Project 3322 - Olympia - Transformation  
Guardia/LC207-MPO-PWD-A-DSP-1000 - CAD copy.dwg

Project East Wick and Sweetwater

Drawing QEOP Safeguarded Tree and Habitat Plan

Scale 1:2,500 @ A0 Date MAR '17 Checked VH Drawn PDC

Drawing No. LCS-DWG-APP-LAN-PAR-GLB-001 Revision PL04

Legend:  
 Preliminary  
 Issued for Planning Approval  
 Issued for Construction  
 Issued for Design/Information  
 Issued for Tender  
 As Built  
Drawing sheet size - A0 Copyright Reserved ©