



Level 10  
1 Stratford Place  
Montfichet Road  
London  
E20 1EJ



8 July 2020

**INFORMATION REQUEST REFERENCE 20-018**

Dear 

Thank you for your information request, received on 8 June 2020. You asked the London Legacy Development Corporation (Legacy Corporation) to provide the following information under the Environmental Information Regulations 2004 (EIR):

*"I would like to make what I believe will be classed as an Environmental Information request:*

*Please provide information as to who is responsible for managing the Channelsea River/Henniker's Ditch culvert and the terms of any agreement regarding this management.*

*Please provide information, including documents and drawings showing the connections, including drainage and sewage, into the culvert and where they originate.*

*Please provide information regarding incidents of pollution of whatever kind in the culvert since it was created and any investigations into these events."*

I can confirm that the Legacy Corporation holds information relevant to your requests. Our response follows your order:

Please provide information as to who is responsible for managing the Channelsea River/Henniker's Ditch culvert and the terms of any agreement regarding this management.

The Legacy Corporation maintain the ditch and culvert entrance, removing debris and cutting down reeds to keep it clear and tidy.

The freehold title to this area and the route of the culvert is held in the most part by Lee Valley Regional Park Authority (LVRPA) under registered title EFGL7626. The ditch and part of the route forms part of land leased to the Legacy Corporation by LVRPA. The lease was granted by LVRPA to LLDC on 27 February 2018 for a term expiring on 31 December 2038.

Please provide information, including documents and drawings showing the connections, including drainage and sewage, into the culvert and where they originate.

The plans, attached in **Annex A**, illustrate the route of the culvert from the culvert entrance to Temple Mill Lane. The culvert originates beyond the QEOP and the Legacy Corporation does not hold the off-Park information. This information is held by Thames Water. Information on how to submit an EIR to Thames Water is available on their website: <https://corporate.thameswater.co.uk/about-us/protecting-our-environment/managing-our-impact/environmental-information-regulations>

Please provide information regarding incidents of pollution of whatever kind in the culvert since it was created and any investigations into these events.”

Please find attached in **Annex B** the information that the Legacy Corporation hold of the incidents of pollution in the culvert. Please note that this information is post London 2012, when the Park re-opened. The Legacy Corporation does not hold this information earlier than this date as the land was not in the Legacy Corporation’s control.

---

If you are unhappy with our response to your request and wish to make a complaint or request an internal review of our decision, you should write to:

Deputy Chief Executive  
London Legacy Development Corporation  
Level 10, 1 Stratford Place  
Montfichet Road  
London, E20 1EJ

Email: [FOI@londonlegacy.co.uk](mailto:FOI@londonlegacy.co.uk)

Please note: complaints and requests for internal review received more than two months after the initial response will not be handled.

If you are not content with the outcome of the internal review, you may appeal directly to the Information Commissioner at the address given below. You should do this within two months of our final decision. There is no charge for making an appeal.

Further information on the Freedom of Information Act 2000 is available from the Information Commissioner’s Office:

Wycliffe House  
Water Lane  
Wilmslow  
SK9 5AF

Telephone 08456 30 60 60 or 01625 54 57 45

Website [www.ico.gov.uk](http://www.ico.gov.uk)

Yours sincerely

FOI / EIR Co-ordinator  
London Legacy Development Corporation



Manhole 2

Manhole 1

3m diameter pipe towards the new developments area

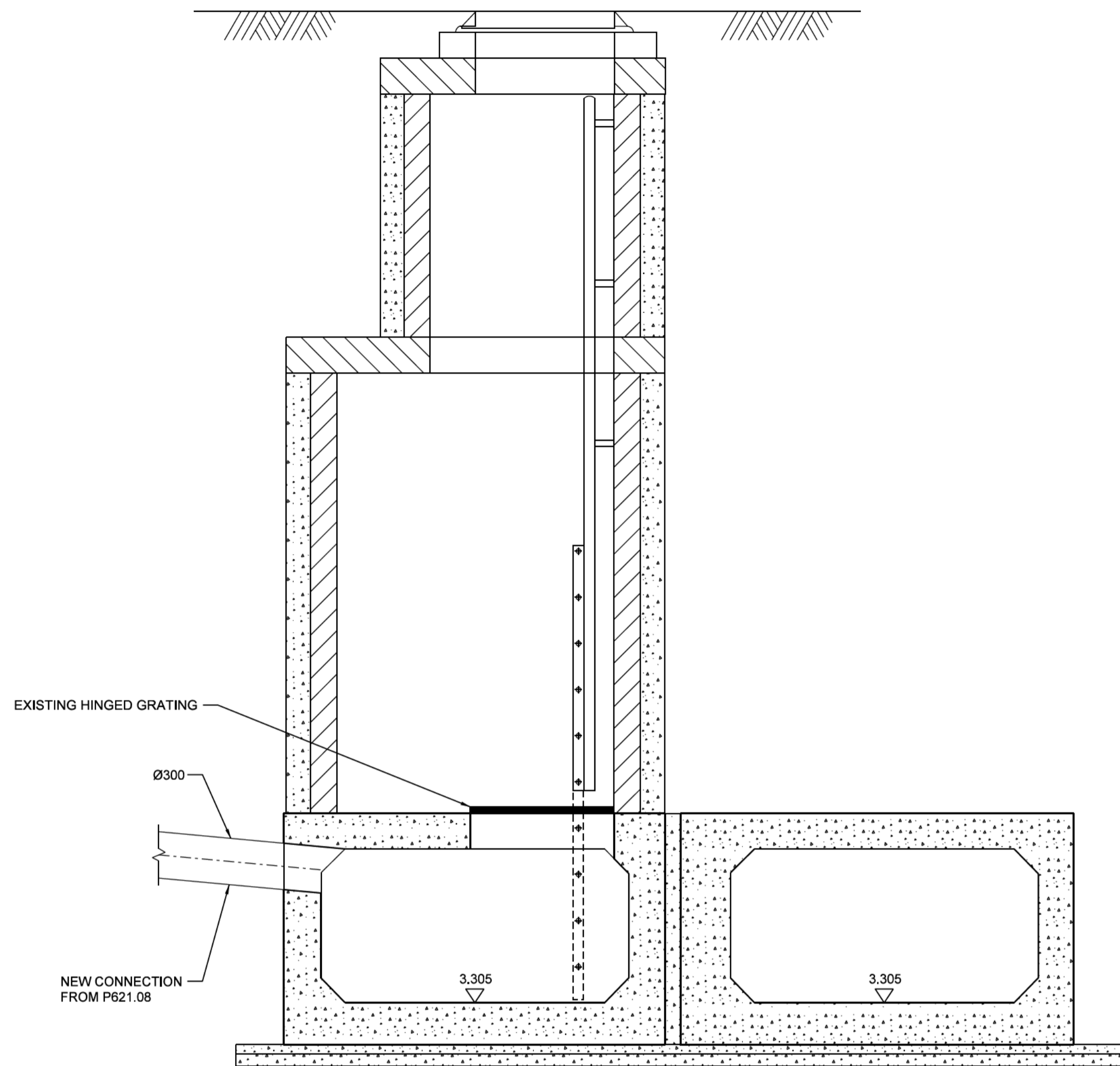
TW boundary line

Olympic Park Ave

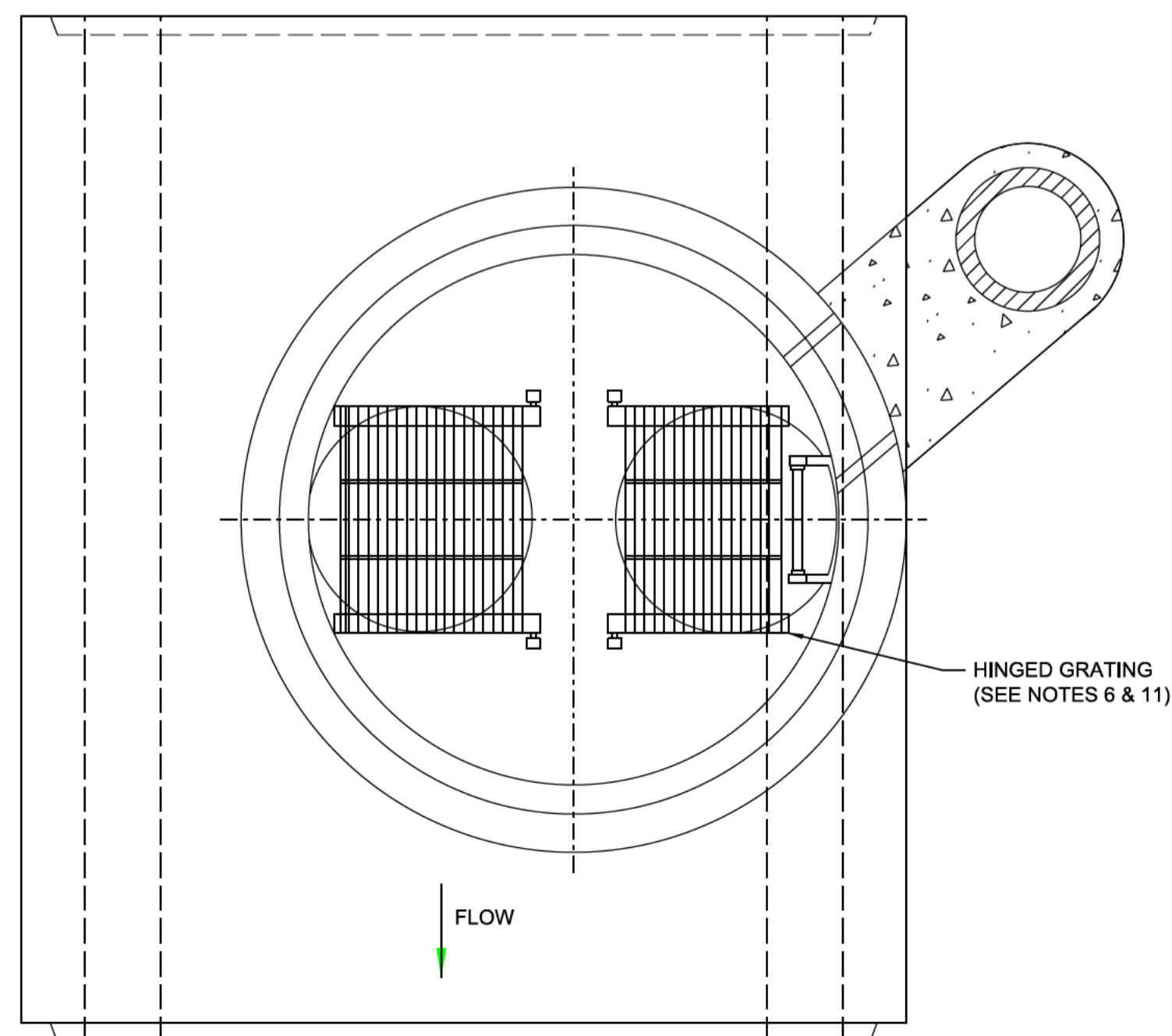


This map is reproduced from Ordnance Survey Material with the permission of Ordnance Survey on behalf of the Controller of Her Majesty's Stationery Office. © Crown Copyright. Unauthorised reproduction infringes Crown Copyright and may lead to prosecution or civil proceedings. All rights reserved. London Legacy Development Corporation, 10004602 (2011)

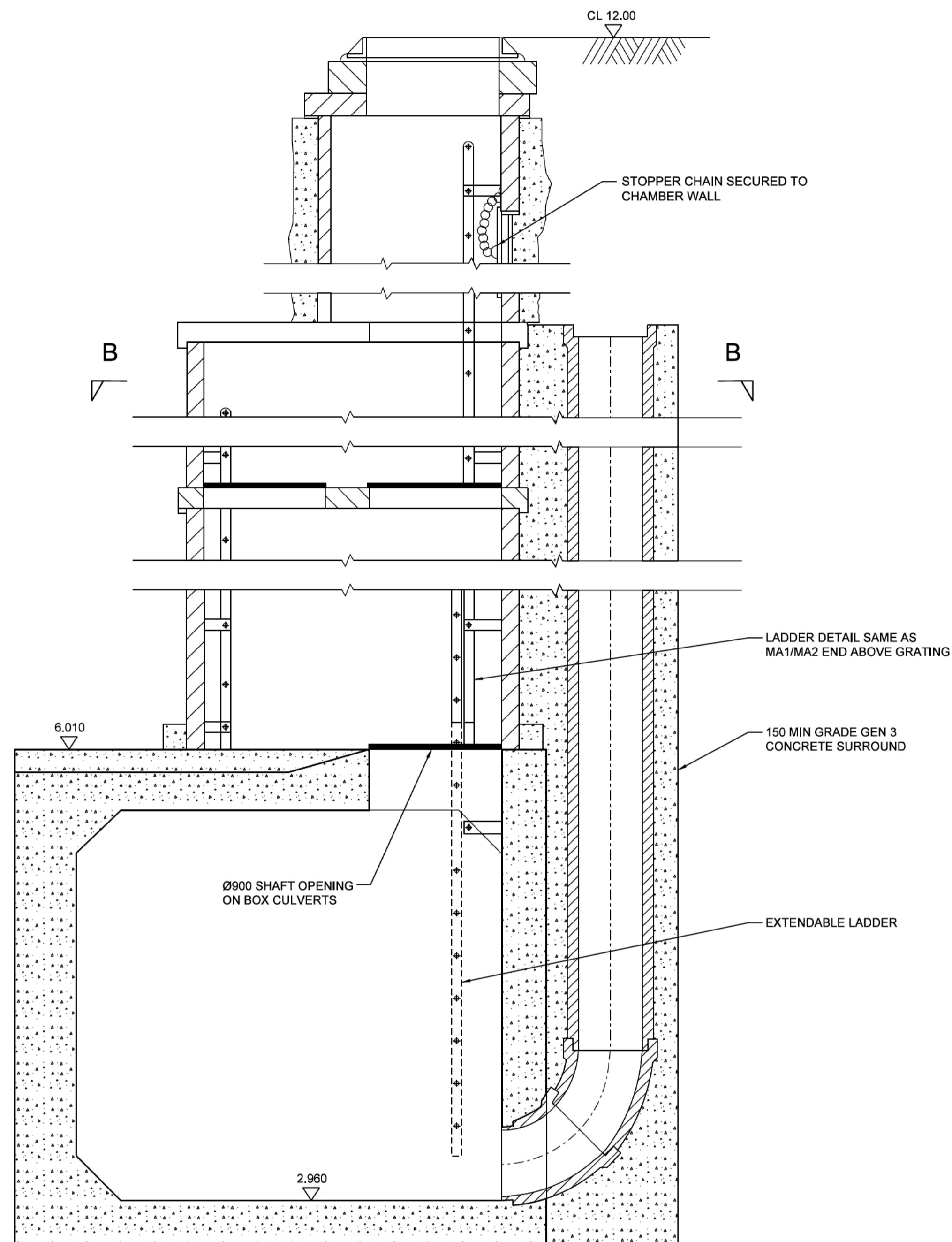
C02



EXISTING MH2 IN FOOTWAY/VERGE



SECTION B - B  
CONNECTION DETAIL TO EXISTING MANHOLE MH5



TYPICAL SECTION THROUGH EXISTING SHAFT No 5  
BACKDROP DETAIL

Copyright: London Legacy Development Corporation ("LLDC"), 2012. All rights reserved. Except as permitted by the Copyright, Design and Patents Act 1988, no part of this document may be reproduced, stored, transmitted or distributed in any form or by any means, whether electronic, mechanical, by photocopy, recording or otherwise, without prior permission of a director. Except where otherwise expressly agreed in writing, the LLDC shall have no responsibility or liability for any loss (direct, consequential or otherwise) which may arise from the reliance on or use of this document or the information contained in it.

Do not scale this drawing.

Notes:

- ALL DIMENSIONS ARE IN MILLIMETERS UNLESS OTHERWISE STATED
- MORTAR TO BE DESIGNATION (i) TO SHW 2400 SERIES
- GRADE GENO CONCRETE BACKFILL TO BE USED WHERE MECHANICAL COMPACTION IS IMPRACTICABLE
- FOR DETAILS OF LADDER SEE MCDHW HCD F10
- PIPES AND JOINTS ADJACENT TO CHAMBER TO BE IN ACCORDANCE WITH SHW CL 507.17
- FOR DETAILS OF HINGED GRATING SEE MCDHW HCD F9
- FOR DETAILS OF GUARDRAIL SEE MCDHW HCD F28
- COVER SLAB, REDUCING SLAB AND CHAMBER RINGS SHALL BE BEDDED WITH MORTAR, PROPRIETARY BITUMEN OR RESIN MASTIC SEALANT, ALL LIFTING HOLES SHALL BE POINTED
- MAXIMUM DEPTH FROM COVER LEVEL TO FIRST LADDER RUNG IS 675mm
- THE CONTRACTOR SHALL PROVIDE A METHOD STATEMENT FOR THE CONSTRUCTION OF THE SHAFTS TO THE SAFETY AND STABILITY OF THE SHAFTS DURING AND AFTER CONSTRUCTION
- OPENING PROVIDED FOR THE MOVEMENT OF MATERIALS, TOOLS, SAFETY DEVICES, CASUALTIES AND FOR USE IN PUMPING/JETTING AND OTHER MAINTENANCE OPERATIONS IN ACCORDANCE WITH BS EN 752-3 : 1997 CLAUSE NB 4.6
- FOR SEQUENCING OF CONSTRUCTION ACTIVITIES REFER TO SPECIFICATION APPENDIX 1/13
- MANHOLE COVER LEVELS SHOWN ARE APPROXIMATE ONLY. FINAL FINISH LEVELS SHALL BE CHECKED AGAINST THE PROPOSED FINISHED GROUND INFORMATION SHOWN ON APPROPRIATE HIGHWAY/LANDSCAPE PLANS

|     |  |          |
|-----|--|----------|
| C02 | For Construction Detailed Design B/B + | 21/06/13 |
| C01 | FOR CONSTRUCTION                       | 09/11/12 |

| Rev | Description | Drawn | Chk'd | Date |
|-----|-------------|-------|-------|------|
|     |             |       |       |      |

Safety, Health and Environment Information  
In addition to the hazards / risks normally associated with the types of work detailed on this drawing, note the following risks and information:

|                                   |    |    |
|-----------------------------------|----|----|
| Construction                      | CL | CL |
|                                   | CH | CH |
|                                   | CH | CH |
| Dismantling / Demolition (Future) | DL | DL |
|                                   | DL | DL |

For information relating to Use, Cleaning and Maintenance see the Health and Safety File. It is assumed that all works will be carried out by a competent contractor working, where appropriate, to an approved method statement.

Prepared by  
Capita Symonds  
on behalf of BAM Nuttall Ltd

Creator  
Prepared by  
BAM Nuttall Ltd  
on behalf of the LLDC

Drawing Title  
Olympic Park  
Infrastructure  
Surface Water & Foul Drainage  
Proposed Hennikers Ditch Connection Detail

Project Title  
QEOP LEGACY TRANSFORMATION

|       |         |          |
|-------|---------|----------|
| Drawn | Checked | Approved |
|       |         |          |

|            |       |      |
|------------|-------|------|
| Date       | Scale | Size |
| 05/11/2012 |       | A1   |

|                    |             |
|--------------------|-------------|
| Purpose of Drawing | Suitability |
| For Construction   | A           |

|                           |       |      |
|---------------------------|-------|------|
| Drawing No.               | Sheet | Rev. |
| LC401-LCI-APK-CD-DDE-0515 | -     | C02  |

PLOT TIME: \$PLOTTIME \$PLOTDATE \$PLOTDATE \$FILENAME



This map is reproduced from Ordnance Survey Material with the permission of Ordnance Survey on behalf of the Controller of Her Majesty's Stationery Office. © Crown Copyright. Unauthorised reproduction infringes Crown Copyright and may lead to prosecution or civil proceedings. All rights reserved. London Legacy Development Corporation, 10004602 (2011)

0605

EX-RG

CP9

S6611

S6610

G 6.38

G 6.40

2.001

1.001

1.002

1.003

3.001

4.001

4.000

4.001

4.000

4.001

4.000

4.001

4.000

4.001

4.000

4.001

4.000

4.001

FOR CONTINUATION SEE DRG LC401-LC-NPK-CD-DGA-0508

FOR CONTINUATION SEE DRG LC401-LC-NPK-CD-DGA-0513

Cover plate to be placed on top of existing CKD base unit across proposed crossing. Refer to drawing LC401-LC-APK-CG-DDE-0514

Existing Hennikers ditch

Connection to Hennikers ditch via existing manhole MH2 subject to EA approval

200mm high swale dam @ 10.5m c/c

Connection to Hennikers ditch via existing manhole MH5 subject to EA approval

Temporary drainage to be provided for existing development plot

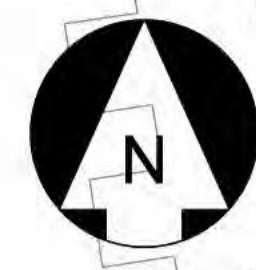
PLOT TIME: \$PLOTTIME

PLOT DATE: \$PLOTDATE

FILENAME: \$FILENAME

CRANBURY

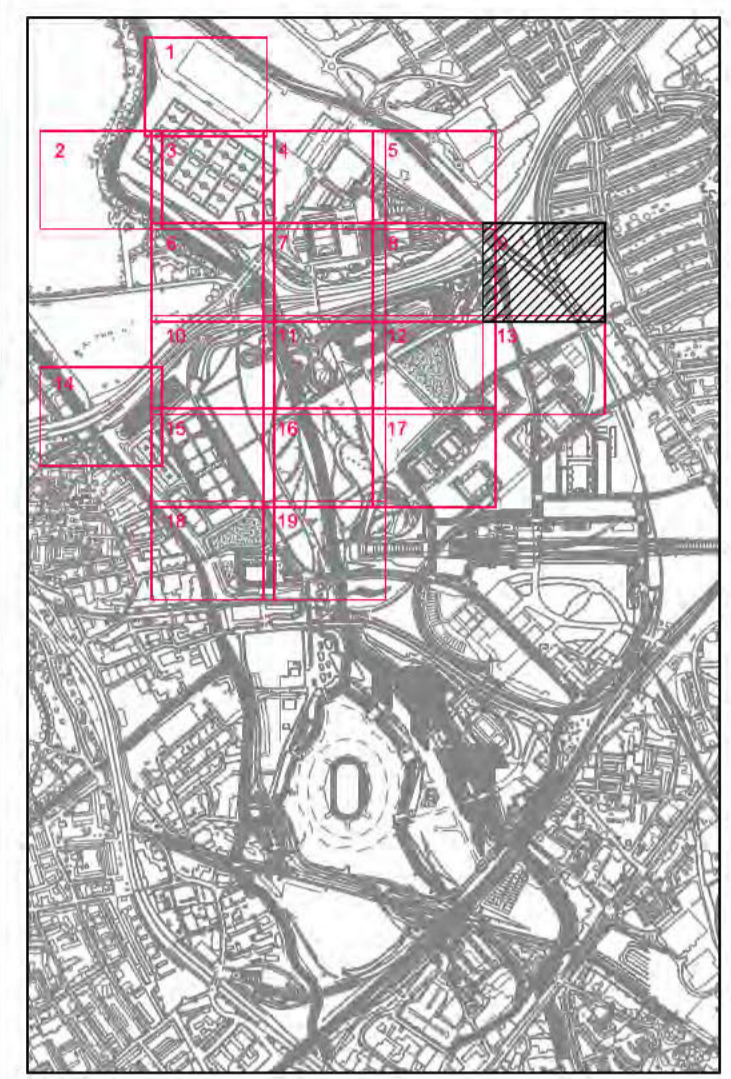
GORDON ROAD



Copyright: London Legacy Development Corporation ("LLDC"), 2012. All rights reserved. Except as permitted by the Copyright, Design and Patents Act 1988, no part of this document may be reproduced, stored, transmitted or distributed in any form or by any means, whether electronic, mechanical, by photocopy, recording or otherwise, without prior permission of a director. Except where otherwise expressly agreed in writing, the LLDC shall have no responsibility or liability for any loss (direct, consequential or otherwise) which may arise from the reliance on or use of this document or the information contained in it.

Do not scale this drawing.  
Notes:

**Key Plan**



**Notes**  
1. Refer to drawing number LC401-LC-APK-CD-DGA-0500 for Legend and notes.

**Safety, Health and Environmental Information**  
A review of the existing Health and Safety File records indicates that park wide there are risks from buried services, contaminated ground beneath the marker layer, contaminate silt and ground water, flooding in riverside areas, adjacent railtrack facilities and unexploded ordnance.

**ALL INFORMATION SHOWN ON THIS DRAWING MUST BE VERIFIED AGAINST THE RESULTS OF A SITE SURVEY AND FINAL AS-BUILT INFORMATION PRIOR TO THE START OF ANY PROCUREMENT, FABRICATION DESIGN OR CONSTRUCTION. ANY VARIATIONS FROM AS-BUILT INFORMATION AND SITE SURVEY MUST BE REFERRED TO CAPITA SYMONDS LTD AND THEIR APPROVAL MUST BE OBTAINED PRIOR TO COMMENCEMENT OF ANY FABRICATION DESIGN OR CONSTRUCTION WORKS.**

|     |  |          |
|-----|--|----------|
| Z01 | AS-BUILT RECORD                        | 28/02/14 |
| C05 | N-CI-00197 Incorporated                | 12/12/13 |
| C04 | N-CI-00148 Incorporated                | 23/08/13 |
| C03 | For Construction Detailed Design B/B + | 21/08/13 |
| C02 | For Construction                       | 21/12/12 |
| C01 | For Construction                       | 13/11/12 |
| P02 | BNL comments incorporated              | 03/08/12 |
| P01 | For Information                        | 25/06/12 |

Rev Description Drawn Chk'd Date

|   |     |      |      |
|---|-----|------|------|
| Safety, Health and Environment Information  |     |      |      |
| In addition to the hazards / risks normally associated with the types of work detailed on this drawing, note the following risks and information: |     |      |      |
| Construction  | Cl. | Chk. | Chk. |
| Dismantling / Demolition (Future)   | DL  | DL   | DL   |

For information relating to Use, Cleaning and Maintenance see the Health and Safety File. It is assumed that all works will be carried out by a competent contractor working, where appropriate, to an approved method statement.

Prepared by  
Capita Symonds  
on behalf of BAM Nuttall Ltd

Creator  
Prepared by  
BAM Nuttall Ltd  
on behalf of the LLDC

Drawing Title  
Olympic North Park  
Infrastructure  
Surface Water & Foul Water Drainage  
General Arrangement Sheet 9

Project Title  
QEOP LEGACY TRANSFORMATION

|       |         |          |
|-------|---------|----------|
| Drawn | Checked | Approved |
|       |         |          |

|          |       |      |
|----------|-------|------|
| Date     | Scale | Size |
| 28/02/14 | 1:500 | A1   |

|                          |             |
|--------------------------|-------------|
| Purpose of Drawing       | Subtality   |
| AS-BUILT                 | R           |
| Drawing No.              | Sheet, Rev. |
| LC401-LC-APK-CD-DGA-0509 | - Z01       |

THIS RECORD DRAWING IS BASED ON INFORMATION PROVIDED BY BAM NUTTALL LTD AND ACCEPTED BY THE PROJECT MANAGER (MACE).  
Provided by: BAM NUTTALL LTD  
Drawing No.: LC401-LC-NPK-CD-DGA-0509  
Revision No: X01

DRG LC401-LC-NPK-CD-DGA-0520

FOR

EX-SW  
400





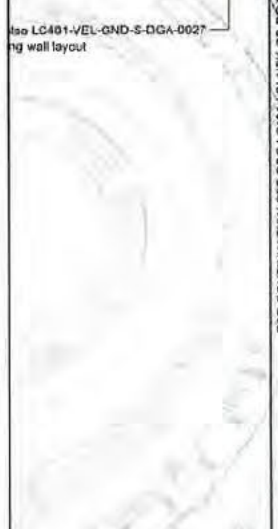


Security Classification Protect

This drawing is the property of Capita Symonds Limited. It is not to be reproduced, stored, transmitted or distributed in any form or by any means, whether electronic, mechanical, photocopying, recording or otherwise, without prior permission of a director. Except where otherwise expressly agreed in writing, the LDCD shall have no responsibility or liability for any loss (direct, consequential or otherwise) which may arise from the reliance on or use of this document or the information contained in it.

Do not scale this drawing. Notes:

Key Plan



Notes

1. Refer to drawing number LC401-LCI-NPK-CD-DGA-0500 for Legend and notes.

Safety, Health and Environmental Information

A review of the existing Health and Safety File records indicates that park wide there are risks from buried services, contaminated ground beneath the marker layer, contaminated silt and ground water, flooding in riverside areas, adjacent rail track facilities and unexploded ordnance.

ALL INFORMATION SHOWN ON THIS DRAWING MUST BE VERIFIED AGAINST THE RESULTS OF A SITE SURVEY AND FINAL AS-BUILT INFORMATION PRIOR TO THE START OF ANY PROCUREMENT, FABRICATION DESIGN OR CONSTRUCTION. ANY VARIATIONS FROM AS-BUILT INFORMATION AND SITE SURVEY MUST BE REFERRED TO CAPITA SYMONDS LTD AND THEIR APPROVAL MUST BE OBTAINED PRIOR TO COMMENCEMENT OF ANY FABRICATION DESIGN OR CONSTRUCTION WORKS.

Rev Description Drawn CW'd Date

|     |                           |       |      |          |
|-----|---------------------------|-------|------|----------|
| Rev | Description               | Drawn | CW'd | Date     |
| S02 | For Construction          |       |      | 21/12/12 |
| CD1 | For Construction          |       |      | 13/11/12 |
| PD2 | BAM comments incorporated |       |      | 03/09/12 |
| PD1 | For Information           |       |      | 25/06/12 |

Safety, Health and Environmental Information

In addition to the hazards / risks normally associated with the types of work detailed on this drawing, note the following risks and information:

Construction CA

Dismantling / Demolition (Future) DI

For information relating to Use, Cleaning and Maintenance see the Health and Safety File. It is assumed that all works will be carried out by a competent contractor working, where appropriate, to an approved method statement.

Prepared by

Capita Symonds

on behalf of BAM Nuttall Ltd

Creator

Prepared by

BAM Nuttall Ltd

on behalf of the LLDC

Drawing Title

Olympic North Park Infrastructure

Surface Water & Foul Drainage

General Arrangement Sheet 12

Project Title

QEOP LEGACY TRANSFORMATION

Drawn s.40 checked s.40 Approved s.40

Date 23/3/13 Scale 1:500 Sheet A1

Purpose of Drawing For Construction Suitability AB

Drawing No. LC401-LCI-NPK-CD-DGA-0512

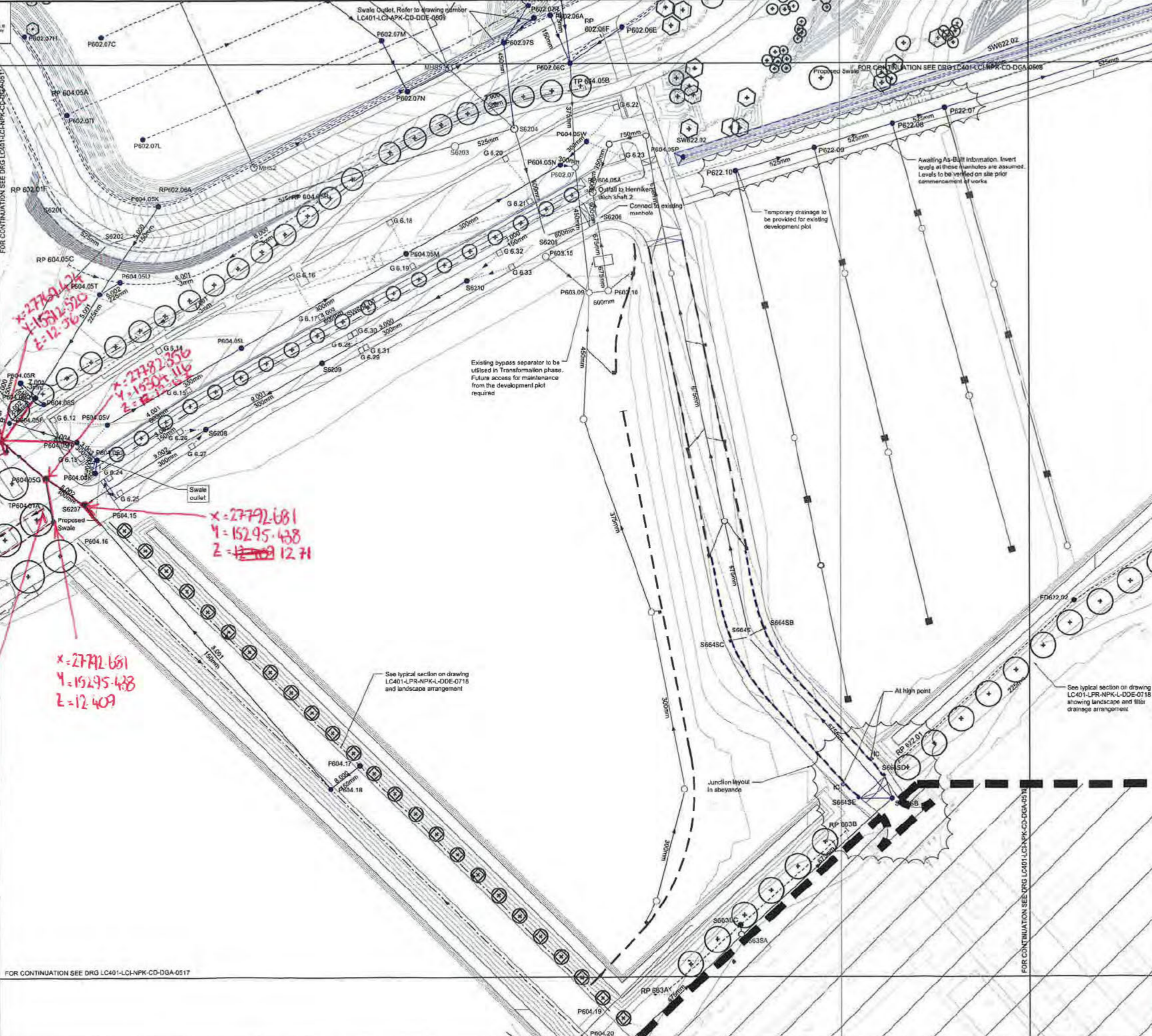
Sheet: 12 of 12

File Name: LC401-LCI-NPK-CD-DGA-0512

Plot Time: \$PLOTTIME

Plot Date: \$PLOTDATE

File Name: \$FILENAME



FOR CONTINUATION SEE DRG LC401-LCI-NPK-CD-DGA-0517

FOR CONTINUATION SEE DRG LC401-LCI-NPK-CD-DGA-0512

x=27792.681  
y=15295.438  
z=12.409

x=27792.681  
y=15295.438  
z=12.409

x=27782.356  
y=15304.116  
z=12.366

x=27782.356  
y=15304.116  
z=12.366

x=27780.424  
y=15302.520  
z=12.366

x=27780.424  
y=15302.520  
z=12.366

x=27780.424  
y=15302.520  
z=12.366

x=27780.424  
y=15295.007  
z=12.70

x=27780.424  
y=15295.007  
z=12.70

x=27780.424  
y=15295.007  
z=12.70

x=27780.424  
y=15295.007  
z=12.70

x=27780.424  
y=15295.007  
z=12.70

x=27780.424  
y=15295.007  
z=12.70

x=27780.424  
y=15295.007  
z=12.70

x=27780.424  
y=15295.007  
z=12.70

x=27780.424  
y=15295.007  
z=12.70

x=27780.424  
y=15295.007  
z=12.70

x=27780.424  
y=15295.007  
z=12.70

See typical section on drawing LC401-LPR-NPK-L-DDE-0718 and landscape arrangement

See typical section on drawing LC401-LPR-NPK-L-DDE-0718 showing landscape and silt drainage arrangement

Existing bypass separator to be utilised in Transformation phase. Future access for maintenance from the development plot required

Temporary drainage to be provided for existing development plot

Awaiting As-Built information. Invert levels at these manholes are assumed. Levels to be verified on site prior commencement of works

FOR CENTRILATION SEE DRG LC401-LCI-NPK-CD-DGA-0508

Swale Outlet. Refer to drawing number LC401-LCI-NPK-CD-DDE-0509

Connect to existing manhole

Proposed Swale

Swale outlet

At high point

Junction layout in abeyance

Outfall to Henrikers ditch shaft 2

Connect to existing manhole

Temporary drainage to be provided for existing development plot

Awaiting As-Built information. Invert levels at these manholes are assumed. Levels to be verified on site prior commencement of works

FOR CENTRILATION SEE DRG LC401-LCI-NPK-CD-DGA-0508

Swale Outlet. Refer to drawing number LC401-LCI-NPK-CD-DDE-0509

Connect to existing manhole

Proposed Swale

Swale outlet

At high point

Junction layout in abeyance

Outfall to Henrikers ditch shaft 2

Connect to existing manhole

Temporary drainage to be provided for existing development plot

Awaiting As-Built information. Invert levels at these manholes are assumed. Levels to be verified on site prior commencement of works

FOR CENTRILATION SEE DRG LC401-LCI-NPK-CD-DGA-0508

Swale Outlet. Refer to drawing number LC401-LCI-NPK-CD-DDE-0509

Connect to existing manhole

Proposed Swale

Swale outlet

At high point

Junction layout in abeyance

Outfall to Henrikers ditch shaft 2

Connect to existing manhole

Temporary drainage to be provided for existing development plot

Awaiting As-Built information. Invert levels at these manholes are assumed. Levels to be verified on site prior commencement of works

FOR CENTRILATION SEE DRG LC401-LCI-NPK-CD-DGA-0508

Swale Outlet. Refer to drawing number LC401-LCI-NPK-CD-DDE-0509

Connect to existing manhole

Proposed Swale

Swale outlet

At high point

Junction layout in abeyance

Outfall to Henrikers ditch shaft 2

Connect to existing manhole

Temporary drainage to be provided for existing development plot

Awaiting As-Built information. Invert levels at these manholes are assumed. Levels to be verified on site prior commencement of works

FOR CENTRILATION SEE DRG LC401-LCI-NPK-CD-DGA-0508

Swale Outlet. Refer to drawing number LC401-LCI-NPK-CD-DDE-0509

Connect to existing manhole

Proposed Swale

Swale outlet

At high point

Junction layout in abeyance

Outfall to Henrikers ditch shaft 2

Connect to existing manhole

Temporary drainage to be provided for existing development plot

Awaiting As-Built information. Invert levels at these manholes are assumed. Levels to be verified on site prior commencement of works

FOR CENTRILATION SEE DRG LC401-LCI-NPK-CD-DGA-0508

Swale Outlet. Refer to drawing number LC401-LCI-NPK-CD-DDE-0509

Connect to existing manhole

Proposed Swale

Swale outlet

At high point

Junction layout in abeyance

Outfall to Henrikers ditch shaft 2

Connect to existing manhole

Temporary drainage to be provided for existing development plot

Awaiting As-Built information. Invert levels at these manholes are assumed. Levels to be verified on site prior commencement of works

FOR CENTRILATION SEE DRG LC401-LCI-NPK-CD-DGA-0508

Swale Outlet. Refer to drawing number LC401-LCI-NPK-CD-DDE-0509

Connect to existing manhole

Proposed Swale

Swale outlet

At high point

Junction layout in abeyance

Outfall to Henrikers ditch shaft 2

Connect to existing manhole

Temporary drainage to be provided for existing development plot

Awaiting As-Built information. Invert levels at these manholes are assumed. Levels to be verified on site prior commencement of works

FOR CENTRILATION SEE DRG LC401-LCI-NPK-CD-DGA-0508

Swale Outlet. Refer to drawing number LC401-LCI-NPK-CD-DDE-0509

Connect to existing manhole

Proposed Swale

Swale outlet

At high point

Junction layout in abeyance

Outfall to Henrikers ditch shaft 2

Connect to existing manhole

Temporary drainage to be provided for existing development plot

Awaiting As-Built information. Invert levels at these manholes are assumed. Levels to be verified on site prior commencement of works

FOR CENTRILATION SEE DRG LC401-LCI-NPK-CD-DGA-0508

Swale Outlet. Refer to drawing number LC401-LCI-NPK-CD-DDE-0509

Connect to existing manhole

Proposed Swale

Swale outlet

At high point

Junction layout in abeyance

Outfall to Henrikers ditch shaft 2

Connect to existing manhole

Temporary drainage to be provided for existing development plot

Awaiting As-Built information. Invert levels at these manholes are assumed. Levels to be verified on site prior commencement of works

FOR CENTRILATION SEE DRG LC401-LCI-NPK-CD-DGA-0508

Swale Outlet. Refer to drawing number LC401-LCI-NPK-CD-DDE-0509

Connect to existing manhole

Proposed Swale

Swale outlet

At high point

Junction layout in abeyance

Outfall to Henrikers ditch shaft 2

Connect to existing manhole

Temporary drainage to be provided for existing development plot

Awaiting As-Built information. Invert levels at these manholes are assumed. Levels to be verified on site prior commencement of works

FOR CENTRILATION SEE DRG LC401-LCI-NPK-CD-DGA-0508

Swale Outlet. Refer to drawing number LC401-LCI-NPK-CD-DDE-0509

Connect to existing manhole

Proposed Swale

Swale outlet

At high point

Junction layout in abeyance

Outfall to Henrikers ditch shaft 2

Connect to existing manhole

Temporary drainage to be provided for existing development plot

Awaiting As-Built information. Invert levels at these manholes are assumed. Levels to be verified on site prior commencement of works

FOR CENTRILATION SEE DRG LC401-LCI-NPK-CD-DGA-0508

Swale Outlet. Refer to drawing number LC401-LCI-NPK-CD-DDE-0509

Connect to existing manhole

Proposed Swale

Swale outlet

At high point

Junction layout in abeyance

Outfall to Henrikers ditch shaft 2

Connect to existing manhole

Temporary drainage to be provided for existing development plot

Awaiting As-Built information. Invert levels at these manholes are assumed. Levels to be verified on site prior commencement of works

FOR CENTRILATION SEE DRG LC401-LCI-NPK-CD-DGA-0508

Swale Outlet. Refer to drawing number LC401-LCI-NPK-CD-DDE-0509

Connect to existing manhole

Proposed Swale

Swale outlet

At high point

Junction layout in abeyance

Outfall to Henrikers ditch shaft 2

Connect to existing manhole

Temporary drainage to be provided for existing development plot

Awaiting As-Built information. Invert levels at these manholes are assumed. Levels to be verified on site prior commencement of works

FOR CENTRILATION SEE DRG LC401-LCI-NPK-CD-DGA-0508

Swale Outlet. Refer to drawing number LC401-LCI-NPK-CD-DDE-0509

Connect to existing manhole

Proposed Swale

Swale outlet

At high point

Junction layout in abeyance

Outfall to Henrikers ditch shaft 2

Connect to existing manhole

Temporary drainage to be provided for existing development plot

Awaiting As-Built information. Invert levels at these manholes are assumed. Levels to be verified on site prior commencement of works

FOR CENTRILATION SEE DRG LC401-LCI-NPK-CD-DGA-0508

Swale Outlet. Refer to drawing number LC401-LCI-NPK-CD-DDE-0509

Connect to existing manhole

Proposed Swale

Swale outlet

At high point

Junction layout in abeyance

Outfall to Henrikers ditch shaft 2

Connect to existing manhole

Temporary drainage to be provided for existing development plot

Awaiting As-Built information. Invert levels at these manholes are assumed. Levels to be verified on site prior commencement of works

FOR CENTRILATION SEE DRG LC401-LCI-NPK-CD-DGA-0508

Swale Outlet. Refer to drawing number LC401-LCI-NPK-CD-DDE-0509

Connect to existing manhole

Proposed Swale

Swale outlet

At high point

Junction layout in abeyance

Outfall to Henrikers ditch shaft 2

Connect to existing manhole

Temporary drainage to be provided for existing development plot

Awaiting As-Built information. Invert levels at these manholes are assumed. Levels to be verified on site prior commencement of works

FOR CENTRILATION SEE DRG LC401-LCI-NPK-CD-DGA-0508

Swale Outlet. Refer to drawing number LC401-LCI-NPK-CD-DDE-0509

Connect to existing manhole

Proposed Swale

Swale outlet

At high point

Junction layout in abeyance

Outfall to Henrikers ditch shaft 2

Connect to existing manhole

Temporary drainage to be provided for existing development plot

Awaiting As-Built information. Invert levels at these manholes are assumed. Levels to be verified on site prior commencement of works

FOR CENTRILATION SEE DRG LC401-LCI-NPK-CD-DGA-0508

Swale Outlet. Refer to drawing number LC401-LCI-NPK-CD-DDE-0509

Connect to existing manhole

Proposed Swale

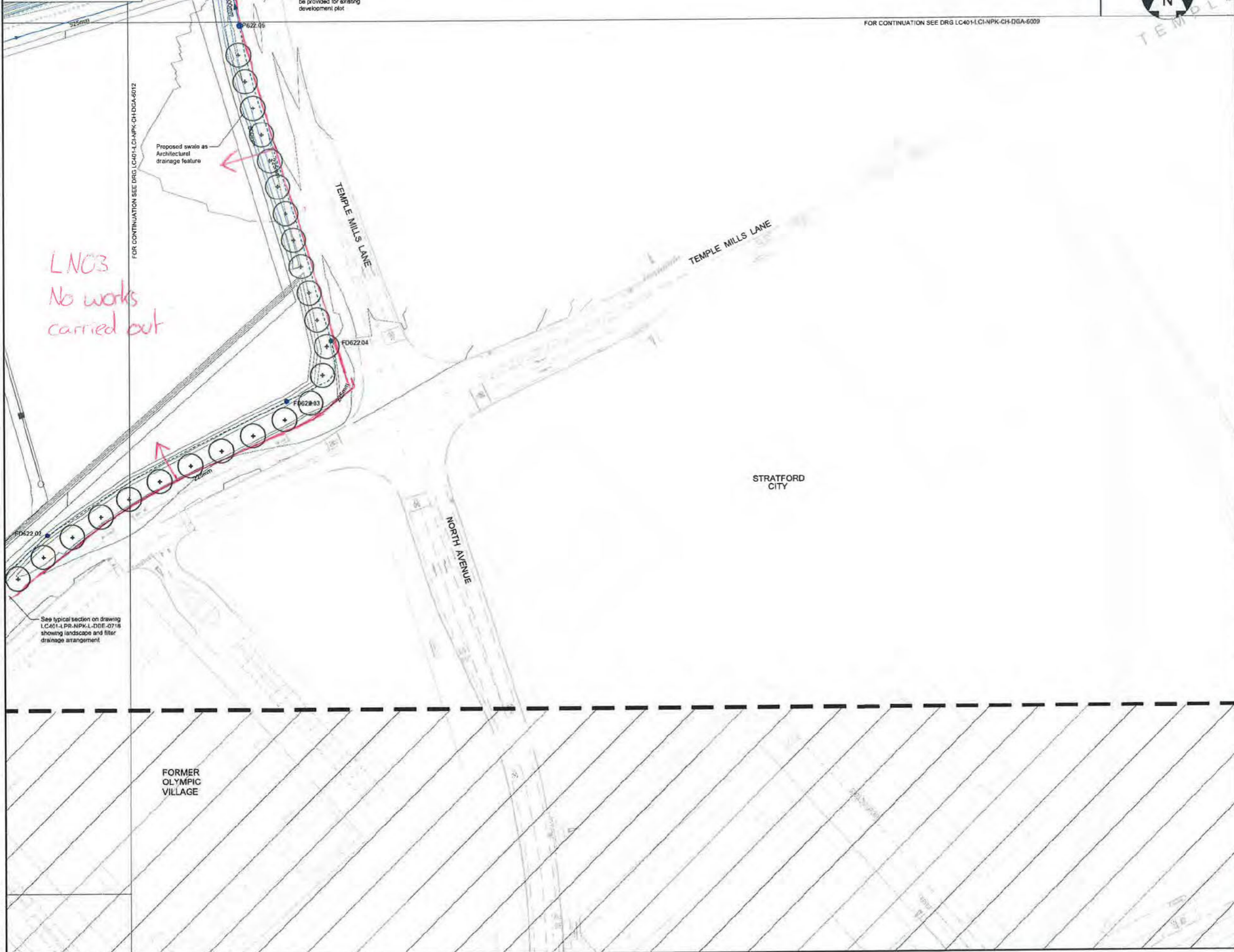
Swale outlet

At high point



Security Classification Protect

This drawing is intended for internal use only. It is not to be used for any other purpose without the prior written consent of the London Legacy Development Corporation. It is not to be used for any other purpose without the prior written consent of the London Legacy Development Corporation.



FOR CONTINUATION SEE DRG LC401-LCI-NPK-CH-DGA-6009



Copyright London Legacy Development Corporation (LLDC) 2012. All rights reserved. Except as permitted by the Copyright, Design and Patents Act 1988, no part of this document may be reproduced, stored, transmitted or distributed in any form or by any means, whether electronic, mechanical, by photocopying, recording or otherwise, without prior permission of a director. Except where otherwise expressly agreed in writing, the LLDC shall have no responsibility for liability for any loss (direct, consequential or otherwise) which may arise from the reliance on or use of this document or the information contained in it.

Do not scale this drawing. Notes.

Key Plan



Notes  
1. Refer to drawing number LC401-LCI-APK-CD-DGA-0500 for Legend and notes

Safety, Health and Environmental Information  
A review of the existing Health and Safety File records indicates that park wise there are risks from buried services, contaminated ground beneath the marker layer, contaminated soil and ground water, flooding in riverside areas, adjacent rail track facilities and unexploded ordnance.

ALL INFORMATION SHOWN ON THIS DRAWING MUST BE VERIFIED AGAINST THE RESULTS OF A SITE SURVEY AND FINAL AS-BUILT INFORMATION PRIOR TO THE START OF ANY PROCUREMENT, FABRICATION DESIGN OR CONSTRUCTION. ANY VARIATIONS FROM AS-BUILT INFORMATION AND SITE SURVEY MUST BE REFERRED TO CAPITA SYMONDS LTD AND THEIR APPROVAL MUST BE OBTAINED PRIOR TO COMMENCEMENT OF ANY FABRICATION DESIGN OR CONSTRUCTION WORKS.

|     |                           |      |          |
|-----|---------------------------|------|----------|
| C02 | For Construction          | s.40 | 21/12/12 |
| C01 | For Construction          |      | 13/11/12 |
| P02 | BNL comments incorporated |      | 03/06/12 |
| P01 | For Information           |      | 25/06/12 |

Safety, Health and Environment Information  
In addition to the hazards / risks normally associated with the types of work detailed on this drawing, note the following risks and information:  
Construction: C, C1, C2, C3, C4, C5, C6, C7, C8, C9, C10, C11, C12, C13, C14, C15, C16, C17, C18, C19, C20, C21, C22, C23, C24, C25, C26, C27, C28, C29, C30, C31, C32, C33, C34, C35, C36, C37, C38, C39, C40, C41, C42, C43, C44, C45, C46, C47, C48, C49, C50, C51, C52, C53, C54, C55, C56, C57, C58, C59, C60, C61, C62, C63, C64, C65, C66, C67, C68, C69, C70, C71, C72, C73, C74, C75, C76, C77, C78, C79, C80, C81, C82, C83, C84, C85, C86, C87, C88, C89, C90, C91, C92, C93, C94, C95, C96, C97, C98, C99, C100, C101, C102, C103, C104, C105, C106, C107, C108, C109, C110, C111, C112, C113, C114, C115, C116, C117, C118, C119, C120, C121, C122, C123, C124, C125, C126, C127, C128, C129, C130, C131, C132, C133, C134, C135, C136, C137, C138, C139, C140, C141, C142, C143, C144, C145, C146, C147, C148, C149, C150, C151, C152, C153, C154, C155, C156, C157, C158, C159, C160, C161, C162, C163, C164, C165, C166, C167, C168, C169, C170, C171, C172, C173, C174, C175, C176, C177, C178, C179, C180, C181, C182, C183, C184, C185, C186, C187, C188, C189, C190, C191, C192, C193, C194, C195, C196, C197, C198, C199, C200, C201, C202, C203, C204, C205, C206, C207, C208, C209, C210, C211, C212, C213, C214, C215, C216, C217, C218, C219, C220, C221, C222, C223, C224, C225, C226, C227, C228, C229, C230, C231, C232, C233, C234, C235, C236, C237, C238, C239, C240, C241, C242, C243, C244, C245, C246, C247, C248, C249, C250, C251, C252, C253, C254, C255, C256, C257, C258, C259, C260, C261, C262, C263, C264, C265, C266, C267, C268, C269, C270, C271, C272, C273, C274, C275, C276, C277, C278, C279, C280, C281, C282, C283, C284, C285, C286, C287, C288, C289, C290, C291, C292, C293, C294, C295, C296, C297, C298, C299, C300, C301, C302, C303, C304, C305, C306, C307, C308, C309, C310, C311, C312, C313, C314, C315, C316, C317, C318, C319, C320, C321, C322, C323, C324, C325, C326, C327, C328, C329, C330, C331, C332, C333, C334, C335, C336, C337, C338, C339, C340, C341, C342, C343, C344, C345, C346, C347, C348, C349, C350, C351, C352, C353, C354, C355, C356, C357, C358, C359, C360, C361, C362, C363, C364, C365, C366, C367, C368, C369, C370, C371, C372, C373, C374, C375, C376, C377, C378, C379, C380, C381, C382, C383, C384, C385, C386, C387, C388, C389, C390, C391, C392, C393, C394, C395, C396, C397, C398, C399, C400, C401, C402, C403, C404, C405, C406, C407, C408, C409, C410, C411, C412, C413, C414, C415, C416, C417, C418, C419, C420, C421, C422, C423, C424, C425, C426, C427, C428, C429, C430, C431, C432, C433, C434, C435, C436, C437, C438, C439, C440, C441, C442, C443, C444, C445, C446, C447, C448, C449, C450, C451, C452, C453, C454, C455, C456, C457, C458, C459, C460, C461, C462, C463, C464, C465, C466, C467, C468, C469, C470, C471, C472, C473, C474, C475, C476, C477, C478, C479, C480, C481, C482, C483, C484, C485, C486, C487, C488, C489, C490, C491, C492, C493, C494, C495, C496, C497, C498, C499, C500, C501, C502, C503, C504, C505, C506, C507, C508, C509, C510, C511, C512, C513, C514, C515, C516, C517, C518, C519, C520, C521, C522, C523, C524, C525, C526, C527, C528, C529, C530, C531, C532, C533, C534, C535, C536, C537, C538, C539, C540, C541, C542, C543, C544, C545, C546, C547, C548, C549, C550, C551, C552, C553, C554, C555, C556, C557, C558, C559, C560, C561, C562, C563, C564, C565, C566, C567, C568, C569, C570, C571, C572, C573, C574, C575, C576, C577, C578, C579, C580, C581, C582, C583, C584, C585, C586, C587, C588, C589, C590, C591, C592, C593, C594, C595, C596, C597, C598, C599, C600, C601, C602, C603, C604, C605, C606, C607, C608, C609, C610, C611, C612, C613, C614, C615, C616, C617, C618, C619, C620, C621, C622, C623, C624, C625, C626, C627, C628, C629, C630, C631, C632, C633, C634, C635, C636, C637, C638, C639, C640, C641, C642, C643, C644, C645, C646, C647, C648, C649, C650, C651, C652, C653, C654, C655, C656, C657, C658, C659, C660, C661, C662, C663, C664, C665, C666, C667, C668, C669, C670, C671, C672, C673, C674, C675, C676, C677, C678, C679, C680, C681, C682, C683, C684, C685, C686, C687, C688, C689, C690, C691, C692, C693, C694, C695, C696, C697, C698, C699, C700, C701, C702, C703, C704, C705, C706, C707, C708, C709, C710, C711, C712, C713, C714, C715, C716, C717, C718, C719, C720, C721, C722, C723, C724, C725, C726, C727, C728, C729, C730, C731, C732, C733, C734, C735, C736, C737, C738, C739, C740, C741, C742, C743, C744, C745, C746, C747, C748, C749, C750, C751, C752, C753, C754, C755, C756, C757, C758, C759, C760, C761, C762, C763, C764, C765, C766, C767, C768, C769, C770, C771, C772, C773, C774, C775, C776, C777, C778, C779, C780, C781, C782, C783, C784, C785, C786, C787, C788, C789, C790, C791, C792, C793, C794, C795, C796, C797, C798, C799, C800, C801, C802, C803, C804, C805, C806, C807, C808, C809, C810, C811, C812, C813, C814, C815, C816, C817, C818, C819, C820, C821, C822, C823, C824, C825, C826, C827, C828, C829, C830, C831, C832, C833, C834, C835, C836, C837, C838, C839, C840, C841, C842, C843, C844, C845, C846, C847, C848, C849, C850, C851, C852, C853, C854, C855, C856, C857, C858, C859, C860, C861, C862, C863, C864, C865, C866, C867, C868, C869, C870, C871, C872, C873, C874, C875, C876, C877, C878, C879, C880, C881, C882, C883, C884, C885, C886, C887, C888, C889, C890, C891, C892, C893, C894, C895, C896, C897, C898, C899, C900, C901, C902, C903, C904, C905, C906, C907, C908, C909, C910, C911, C912, C913, C914, C915, C916, C917, C918, C919, C920, C921, C922, C923, C924, C925, C926, C927, C928, C929, C930, C931, C932, C933, C934, C935, C936, C937, C938, C939, C940, C941, C942, C943, C944, C945, C946, C947, C948, C949, C950, C951, C952, C953, C954, C955, C956, C957, C958, C959, C960, C961, C962, C963, C964, C965, C966, C967, C968, C969, C970, C971, C972, C973, C974, C975, C976, C977, C978, C979, C980, C981, C982, C983, C984, C985, C986, C987, C988, C989, C990, C991, C992, C993, C994, C995, C996, C997, C998, C999, C1000, C1001, C1002, C1003, C1004, C1005, C1006, C1007, C1008, C1009, C1010, C1011, C1012, C1013, C1014, C1015, C1016, C1017, C1018, C1019, C1020, C1021, C1022, C1023, C1024, C1025, C1026, C1027, C1028, C1029, C1030, C1031, C1032, C1033, C1034, C1035, C1036, C1037, C1038, C1039, C1040, C1041, C1042, C1043, C1044, C1045, C1046, C1047, C1048, C1049, C1050, C1051, C1052, C1053, C1054, C1055, C1056, C1057, C1058, C1059, C1060, C1061, C1062, C1063, C1064, C1065, C1066, C1067, C1068, C1069, C1070, C1071, C1072, C1073, C1074, C1075, C1076, C1077, C1078, C1079, C1080, C1081, C1082, C1083, C1084, C1085, C1086, C1087, C1088, C1089, C1090, C1091, C1092, C1093, C1094, C1095, C1096, C1097, C1098, C1099, C1100, C1101, C1102, C1103, C1104, C1105, C1106, C1107, C1108, C1109, C1110, C1111, C1112, C1113, C1114, C1115, C1116, C1117, C1118, C1119, C1120, C1121, C1122, C1123, C1124, C1125, C1126, C1127, C1128, C1129, C1130, C1131, C1132, C1133, C1134, C1135, C1136, C1137, C1138, C1139, C1140, C1141, C1142, C1143, C1144, C1145, C1146, C1147, C1148, C1149, C1150, C1151, C1152, C1153, C1154, C1155, C1156, C1157, C1158, C1159, C1160, C1161, C1162, C1163, C1164, C1165, C1166, C1167, C1168, C1169, C1170, C1171, C1172, C1173, C1174, C1175, C1176, C1177, C1178, C1179, C1180, C1181, C1182, C1183, C1184, C1185, C1186, C1187, C1188, C1189, C1190, C1191, C1192, C1193, C1194, C1195, C1196, C1197, C1198, C1199, C1200, C1201, C1202, C1203, C1204, C1205, C1206, C1207, C1208, C1209, C1210, C1211, C1212, C1213, C1214, C1215, C1216, C1217, C1218, C1219, C1220, C1221, C1222, C1223, C1224, C1225, C1226, C1227, C1228, C1229, C1230, C1231, C1232, C1233, C1234, C1235, C1236, C1237, C1238, C1239, C1240, C1241, C1242, C1243, C1244, C1245, C1246, C1247, C1248, C1249, C1250, C1251, C1252, C1253, C1254, C1255, C1256, C1257, C1258, C1259, C1260, C1261, C1262, C1263, C1264, C1265, C1266, C1267, C1268, C1269, C1270, C1271, C1272, C1273, C1274, C1275, C1276, C1277, C1278, C1279, C1280, C1281, C1282, C1283, C1284, C1285, C1286, C1287, C1288, C1289, C1290, C1291, C1292, C1293, C1294, C1295, C1296, C1297, C1298, C1299, C1300, C1301, C1302, C1303, C1304, C1305, C1306, C1307, C1308, C1309, C1310, C1311, C1312, C1313, C1314, C1315, C1316, C1317, C1318, C1319, C1320, C1321, C1322, C1323, C1324, C1325, C1326, C1327, C1328, C1329, C1330, C1331, C1332, C1333, C1334, C1335, C1336, C1337, C1338, C1339, C1340, C1341, C1342, C1343, C1344, C1345, C1346, C1347, C1348, C1349, C1350, C1351, C1352, C1353, C1354, C1355, C1356, C1357, C1358, C1359, C1360, C1361, C1362, C1363, C1364, C1365, C1366, C1367, C1368, C1369, C1370, C1371, C1372, C1373, C1374, C1375, C1376, C1377, C1378, C1379, C1380, C1381, C1382, C1383, C1384, C1385, C1386, C1387, C1388, C1389, C1390, C1391, C1392, C1393, C1394, C1395, C1396, C1397, C1398, C1399, C1400, C1401, C1402, C1403, C1404, C1405, C1406, C1407, C1408, C1409, C1410, C1411, C1412, C1413, C1414, C1415, C1416, C1417, C1418, C1419, C1420, C1421, C1422, C1423, C1424, C1425, C1426, C1427, C1428, C1429, C1430, C1431, C1432, C1433, C1434, C1435, C1436, C1437, C1438, C1439, C1440, C1441, C1442, C1443, C1444, C1445, C1446, C1447, C1448, C1449, C1450, C1451, C1452, C1453, C1454, C1455, C1456, C1457, C1458, C1459, C1460, C1461, C1462, C1463, C1464, C1465, C1466, C1467, C1468, C1469, C1470, C1471, C1472, C1473, C1474, C1475, C1476, C1477, C1478, C1479, C1480, C1481, C1482, C1483, C1484, C1485, C1486, C1487, C1488, C1489, C1490, C1491, C1492, C1493, C1494, C1495, C1496, C1497, C1498, C1499, C1500, C1501, C1502, C1503, C1504, C1505, C1506, C1507, C1508, C1509, C1510, C1511, C1512, C1513, C1514, C1515, C1516, C1517, C1518, C1519, C1520, C1521, C1522, C1523, C1524, C1525, C1526, C1527, C1528, C1529, C1530, C1531, C1532, C1533, C1534, C1535, C1536, C1537, C1538, C1539, C1540, C1541, C1542, C1543, C1544, C1545, C1546, C1547, C1548, C1549, C1550, C1551, C1552, C1553, C1554, C1555, C1556, C1557, C1558, C1559, C1560, C1561, C1562, C1563, C1564, C1565, C1566, C1567, C1568, C1569, C1570, C1571, C1572, C1573, C1574, C1575, C1576, C1577, C1578, C1579, C1580, C1581, C1582, C1583, C1584, C1585, C1586, C1587, C1588, C1589, C1590, C1591, C1592, C1593, C1594, C1595, C1596, C1597, C1598, C1599, C1600, C1601, C1602, C1603, C1604, C1605, C1606, C1607, C1608, C1609, C1610, C1611, C1612, C1613, C1614, C1615, C1616, C1617, C1618, C1619, C1620, C1621, C1622, C1623, C1624, C1625, C1626, C1627, C1628, C1629, C1630, C1631, C1632, C1633, C1634, C1635, C1636, C1637, C1638, C1639, C1640, C1641, C1642, C1643, C1644, C1645, C1646, C1647, C1648, C1649, C1650, C1651, C1652, C1653, C1654, C1655, C1656, C1657, C1658, C1659, C1660, C1661, C1662, C1663, C1664, C1665, C1666, C1667, C1668, C1669, C1670, C1671, C1672, C1673, C1674, C1675, C1676, C1677, C1678, C1679, C1680, C1681, C1682, C1683, C1684, C1685, C1686, C1687, C1688, C1689, C1690, C1691, C1692, C1693, C1694, C1695, C1696, C1697, C1698, C1699, C1700, C1701, C1702, C1703, C1704, C1705, C1706, C1707, C1708, C1709, C1710, C1711, C1712, C1713, C1714, C1715, C1716, C1717, C1718, C1719, C1720, C1721, C1722, C1723, C1724, C1725, C1726, C1727, C1728, C1729, C1730, C1731, C1732, C1733, C1734, C1735, C1736, C1737, C1738, C1739, C1740, C1741, C1742, C1743, C1744, C1745, C1746, C1747, C1748, C1749, C1750, C1751, C1752, C1753, C1754, C1755, C1756, C1757, C1758, C1759, C1760, C1761, C1762, C1763, C1764, C1765, C1766, C1767, C1768, C1769, C1770, C1771, C1772, C1773, C1774, C1775, C1776, C1777, C1778, C1779, C1780, C1781, C1782, C1783, C1784, C1785, C1786, C1787, C1788, C1789, C1790, C1791, C1792, C1793, C1794, C1795, C1796, C1797, C1798, C1799, C1800, C1801, C1802, C1803, C1804, C1805, C1806, C1807, C1808, C1809, C1810, C1811, C1812, C1813, C1814, C1815, C1816, C1817, C1818, C1819, C1820, C1821, C1822, C1823, C1824, C1825, C1826, C1827, C1828, C1829, C1830, C1831, C1832, C1833, C1834, C1835, C1836, C1837, C1838, C1839, C1840, C1841, C1842, C1843, C1844, C1845, C1846, C1847, C1848, C1849, C1850, C1851, C1852, C1853, C1854, C1855, C1856, C1857, C1858, C1859, C1860, C1861, C1862, C1863, C1864, C1865, C1866, C1867, C1868, C1869, C1870, C1871, C1872, C1873, C1874, C1875, C1876, C1877, C1878, C1879, C1880, C1881, C1882, C1883, C1884, C1885, C1886, C1887, C1888, C1889, C1890, C1891, C1892, C1893, C1894, C1895, C1896, C1897, C1898, C1899, C1900, C1901, C1902, C1903, C1904, C1905, C1906, C1907, C1908, C1909, C1910, C1911, C1912, C1913, C1914, C1915, C1916, C1917, C1918, C1919, C1920, C1921, C1922, C1923, C1924, C1925, C1926, C1927, C1928, C1929, C1930, C1931, C1932, C1933, C1934, C1935, C1936, C1937, C1938, C1939, C1940, C1941, C1942, C1943, C1944, C1945, C1946, C1947, C1948, C1949, C1950, C1951, C1952, C1953, C1954, C1955, C1956, C1957, C1958, C1959, C1960, C1961, C1962, C1963, C1964, C1965, C1966, C1967, C1968, C1969, C1970, C1971, C1972, C1973, C1974, C1975, C1976, C1977, C1978, C1979, C1980, C1981, C1982, C1983, C1984, C1985, C1986, C1987, C1988, C1989, C1990, C1991, C1992, C1993, C1994, C1995, C1996, C1997, C1998, C1999, C2000, C2001, C2002, C2003, C2004, C2005, C2006, C2007, C2008, C2009, C2010, C2011, C2012, C2013, C2014, C2015, C2016,



This map is reproduced from Ordnance Survey Material with the permission of Ordnance Survey on behalf of the Controller of Her Majesty's Stationery Office. © Crown Copyright. Unauthorised reproduction infringes Crown Copyright and may lead to prosecution or civil proceedings. All rights reserved. London Legacy Development Corporation, 10060602 2011



LN03  
NO WORKS  
CARRIED OUT

THIS RECORD DRAWING IS BASED ON INFORMATION PROVIDED BY BAM NUTTALL LTD AND ACCEPTED BY THE PROJECT MANAGER (MACE).  
Provided by: BAM NUTTALL LTD  
Drawing No.: LC401-LCI-NPK-CD-DGA-0516  
Revision No: X03

FOR CONTINUATION SEE DRG LC401-LCI-NPK-CH-DGA-6011

Copyright: London Legacy Development Corporation ("LLDC"), 2012. All rights reserved. Except as permitted by the Copyright, Design and Patents Act 1988, no part of this document may be reproduced, stored, transmitted or distributed in any form or by any means, whether electronic, mechanical, by photocopy, recording or otherwise, without prior permission of a director. Except where otherwise expressly agreed in writing, the LLDC shall have no responsibility or liability for any loss (direct, consequential or otherwise) which may arise from the reliance on or use of this document or the information contained in it.

Do not scale this drawing.  
Notes:

**Key Plan**



**Notes**  
1. Refer to drawing number LC401-LCI-APK-CD-DGA-0500 for Legend and notes.

**Safety, Health and Environmental Information**  
A review of the existing Health and Safety File records indicates that park wide there are risks from buried services, contaminated ground beneath the marker layer, contaminate silt and ground water, flooding in riverside areas, adjacent rail track facilities and unexploded ordnance.

**ALL INFORMATION SHOWN ON THIS DRAWING MUST BE VERIFIED AGAINST THE RESULTS OF A SITE SURVEY AND FINAL AS-BUILT INFORMATION PRIOR TO THE START OF ANY PROCUREMENT, FABRICATION DESIGN OR CONSTRUCTION. ANY VARIATIONS FROM AS-BUILT INFORMATION AND SITE SURVEY MUST BE REFERRED TO CAPITA SYMONDS LTD AND THEIR APPROVAL MUST BE OBTAINED PRIOR TO COMMENCEMENT OF ANY FABRICATION DESIGN OR CONSTRUCTION WORKS.**

|     |                           |          |
|-----|---------------------------|----------|
| Z01 | AS-BUILT RECORD           | 14/02/14 |
| C02 | For Construction          | 21/12/12 |
| C01 | For Construction          | 13/11/12 |
| P02 | BNL comments incorporated | 03/08/12 |
| P01 | For Information           | 25/06/12 |

Rev Description Drawn Chk'd Date

|                                   |    |    |
|-----------------------------------|----|----|
| Construction                      | CI | CI |
| Dismantling / Demolition (Future) | DI | DI |

For information relating to Use, Cleaning and Maintenance see the Health and Safety File. It is assumed that all works will be carried out by a competent contractor working, where appropriate, to an approved method statement.

Prepared by  
Capita Symonds  
on behalf of BAM Nuttall Ltd

Creator  
Prepared by  
BAM Nuttall Ltd  
on behalf of the LLDC

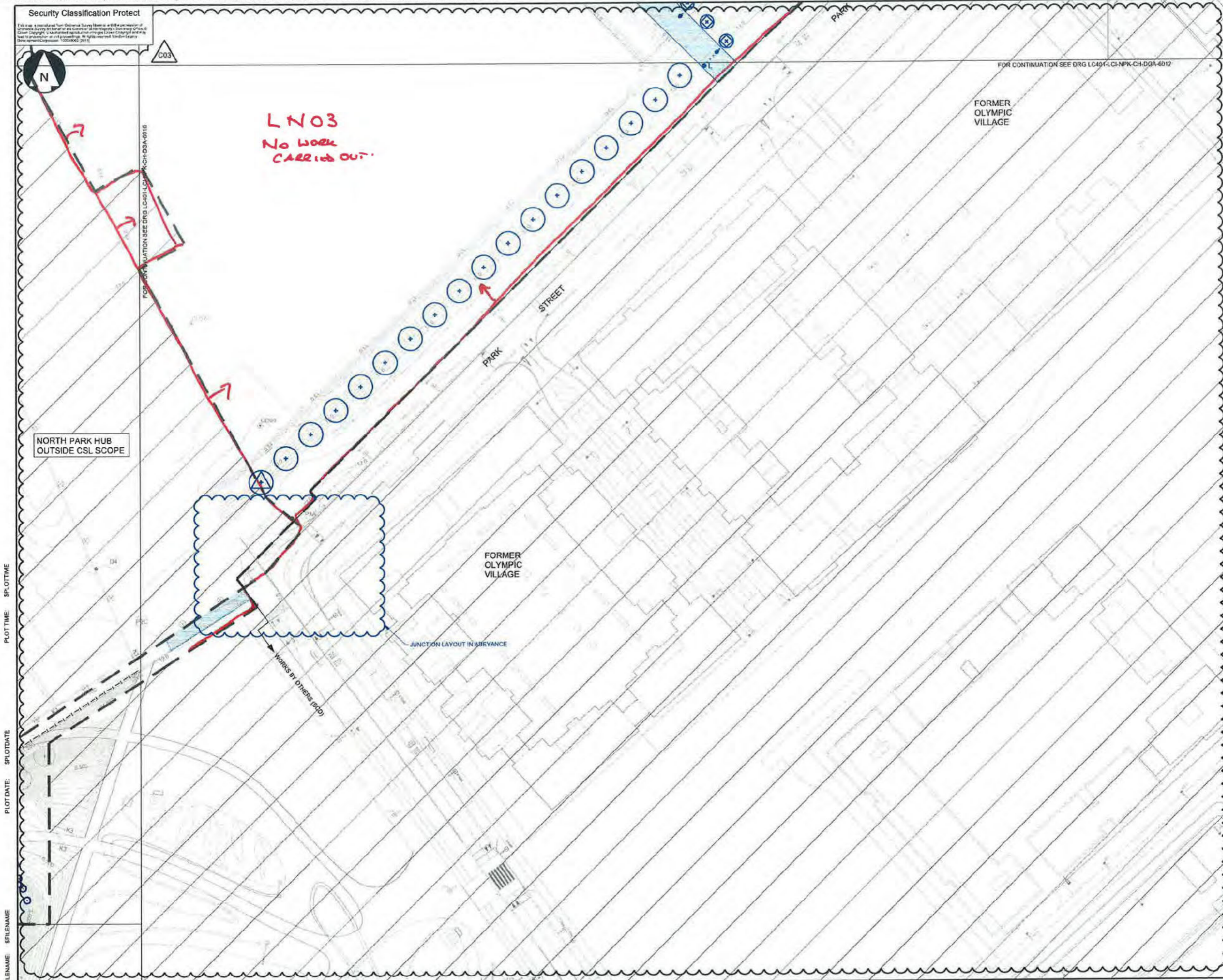
Drawing Title  
Olympic North Park  
Infrastructure  
Surface Water & Foul Drainage  
General Arrangement Sheet 16

Project Title  
QEOP LEGACY TRANSFORMATION

|                           |          |             |
|---------------------------|----------|-------------|
| Drawn                     | Checked  | Approved    |
| 14/02/14                  | 1:500    | A1          |
| Date                      | Scale    | Size        |
| 14/02/14                  | 1:500    | A1          |
| Purpose of Drawing        | AS-BUILT | Suitability |
|                           |          | R           |
| Drawing No.               | Sheet    | Rev.        |
| LC401-LCI-NPK-CD-DGA-0516 | -        | Z01         |

PLOT TIME: \$PLOTTIME  
PLOT DATE: \$PLOTDATE  
FILENAME: \$FILENAME





Security Classification Protect  
 C03

FOR CONTINUATION SEE DRG LC401-LCI-NPK-CH-DGA-6012

FORMER OLYMPIC VILLAGE

LN03  
 No work  
 carried out

NORTH PARK HUB  
 OUTSIDE CSL SCOPE

FORMER OLYMPIC VILLAGE

JUNCTION LAYOUT IN ABEYANCE

WORKS BY OTHERS (SDD)

Copyright London Legacy Development Corporation (LLDC) 2012. All rights reserved. Except as permitted by the Copyright, Design and Patents Act 1988, no part of this document may be reproduced, stored, transmitted or distributed in any form or by any means, whether electronic, mechanical, by photocopying, recording or otherwise, without prior permission of a director. Except where otherwise expressly agreed in writing, the LLDC shall have no responsibility or liability for any loss (direct, consequential or otherwise) which may arise from the reliance on or use of this document or the information contained in it.

Do not scale this drawing.

Notes:  
 1. FOR LEGEND AND NOTES REFER TO DRAWING NUMBER LC401-LCI-APK-CH-DGA-6000

KEY PLAN

Safety, Health and Environmental Information  
 A review of the existing Health and Safety File records indicates that park wide there are risks from buried services, contaminated ground beneath the marker layer, contaminated silt and ground water, flooding in riverside areas, adjacent rail track facilities and unexploded ordnance.

ALL INFORMATION SHOWN ON THIS DRAWING MUST BE VERIFIED AGAINST THE RESULTS OF A SITE SURVEY AND FINAL AS-BUILT INFORMATION PRIOR TO THE START OF ANY PROCUREMENT, FABRICATION DESIGN OR CONSTRUCTION. ANY VARIATIONS FROM AS-BUILT INFORMATION AND SITE SURVEY MUST BE REFERRED TO CAPITA SYMONDS LTD AND THEIR APPROVAL MUST BE OBTAINED PRIOR TO COMMENCEMENT OF ANY FABRICATION DESIGN OR CONSTRUCTION WORKS.

|     |   |             |          |
|-----|---|-------------|----------|
| C03 | For Coordination with Detailer Design 60 - Categories D/1 | s.40        | 02/04/13 |
| C02 | BIM Comments Incorporated                                 |             | 14/12/12 |
| C01 | For Construction  |             | 18/10/12 |
| P02 | BIM Comments Incorporated                                 |             | 27/07/12 |
| P01 | Preliminary Design  |             | 25/06/12 |
| Rev | Description   | Drawn (D/W) | Date     |

Safety, Health and Environment Information  
 In addition to the hazards / risk normally associated with the types of work detailed on this drawing, note the following risks and information:

|                                   |                |
|-----------------------------------|----------------|
| Construction                      | C1<br>C2<br>C3 |
| Dismantling / Demolition (Future) | D1<br>D2       |

For information relating to Use, Cleaning and Maintenance see the Health and Safety File. It is assumed that all work will be carried out by a competent contractor working, where appropriate, to an approved method statement.

Prepared by  
 Capita Symonds  
 on behalf of BAM Nuttall Ltd

Creator  
 Prepared by  
 BAM Nuttall Ltd  
 on behalf of the LLDC

Drawing Title  
 Olympic North Park  
 Infrastructure Highways Composite  
 General Arrangement  
 Sheet 17

Project Title  
 QEOP LEGACY TRANSFORMATION

|       |            |         |       |          |      |
|-------|------------|---------|-------|----------|------|
| Drawn | s.40       | Checked | s.40  | Approved | s.40 |
| Date  | 12/6/13    | Scale   | 1:500 | Size     | A1   |
|       | 25/04/2012 |         |       |          |      |

Purpose of Drawing  
 AS BUILT  
 For Construction

Reliability  
 AB - A

Drawing No.  
 LC401-LCI-NPK-CH-DGA-6017.AB

Sheet  
 099





## Hennikers Ditch – Record of known sewage discharge incidents

| Date of incident | Details   |
|------------------|---|
| 2 June 2017      | Sewage smell coming from Hennikers Ditch reported by email on 2.6.2017 to the Environment Agency asking them to investigate.  |
| 29 April 2020    | Sewage discharge following rainfall into Henniker's Ditch reported to Environment Agency 29.4.2020 reference number EA 1802351. Also reported to Thames Water.  |
| 29 April 2020    | Separate discharge in Water Glades Pond owned by East Village who liaised with Thames Water and reported to Environment Agency reference EA 1803924. East Village management arranged site clean-up.  |
| 7 June 2020      | Sewage discharge following rainfall into Henniker's Ditch reported to Environment Agency 8.6.2020 reference number EA 1815324. Also reported to Thames Water on 8.6.2020 reference number 00608987025. Thames Water attended the site on 8.6.2020 at 10.15 hrs.   |
| 16 June 2020     | Sewage discharge incident occurred on 16.6.2020 – reported to the Environment Agency at 11:17 hrs on 17.6.2020 (EA Ref: 1818362). Also reported the matter to Thames Water Pollution Control at 11:45hrs on 17.6.2020 and a follow up call to Thames Water on 18 June 2020 at 15:47 hrs – Thames Water incident number 00618951765. Thames Water attended the scene on 18 June 2020 at 18:30 hrs. |