



TW boundary line

3m diameter pipe towards the new developments area

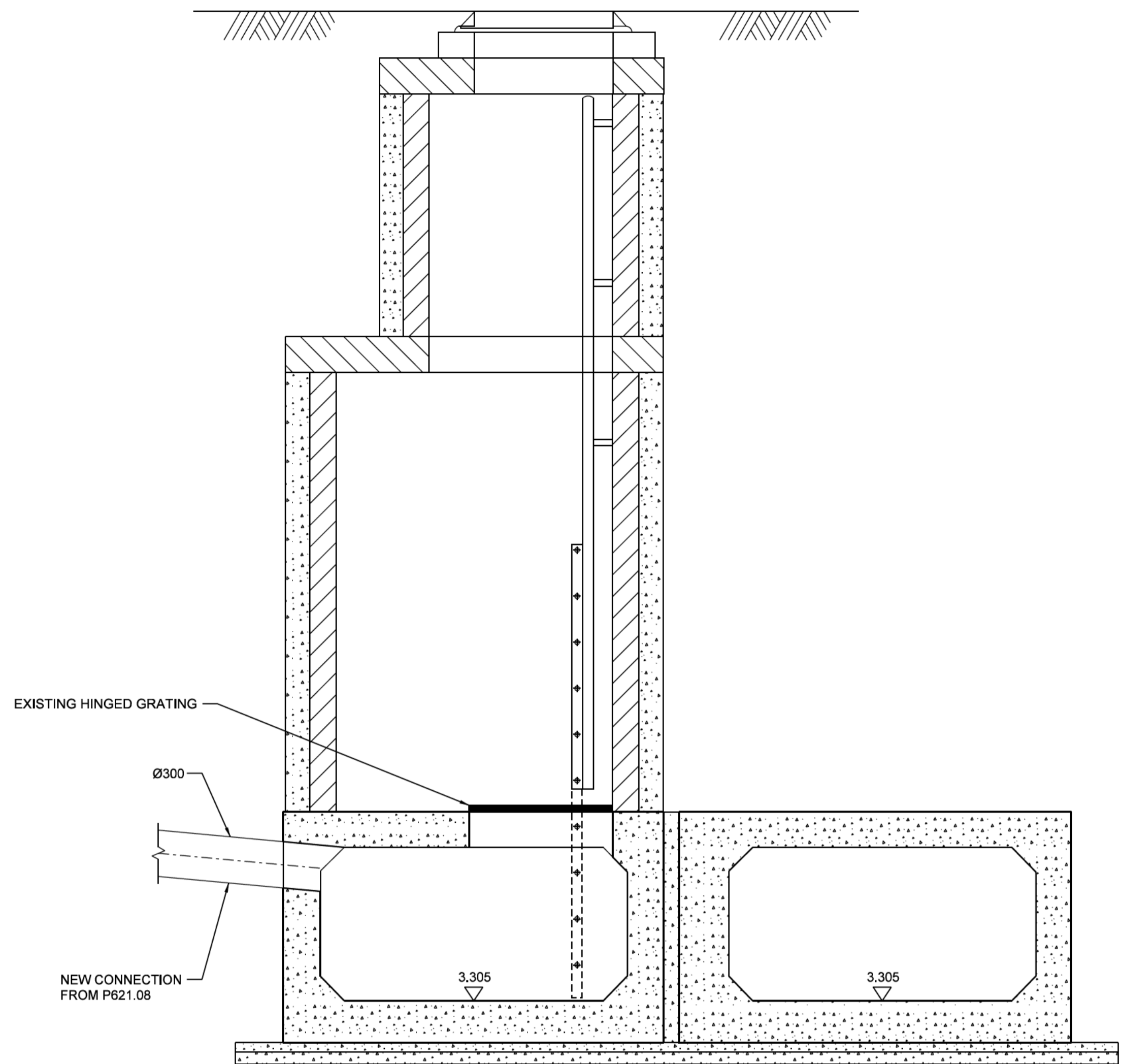
Manhole 2

Manhole 1

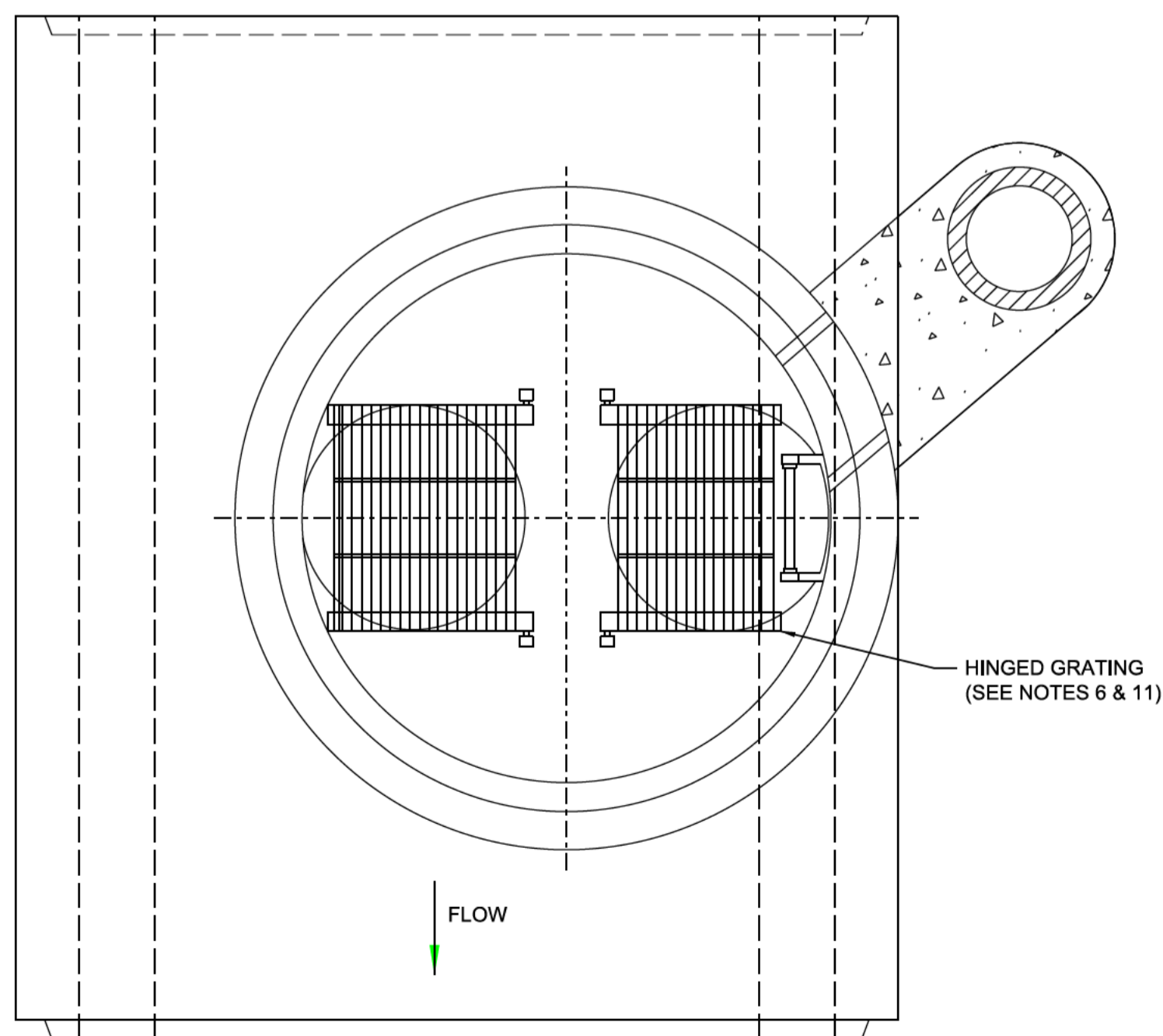
Olympic Park Ave

This map is reproduced from Ordnance Survey Material with the permission of Ordnance Survey on behalf of the Controller of Her Majesty's Stationery Office. © Crown Copyright. Unauthorised reproduction infringes Crown Copyright and may lead to prosecution or civil proceedings. All rights reserved. London Legacy Development Corporation, 10004602 (2011)

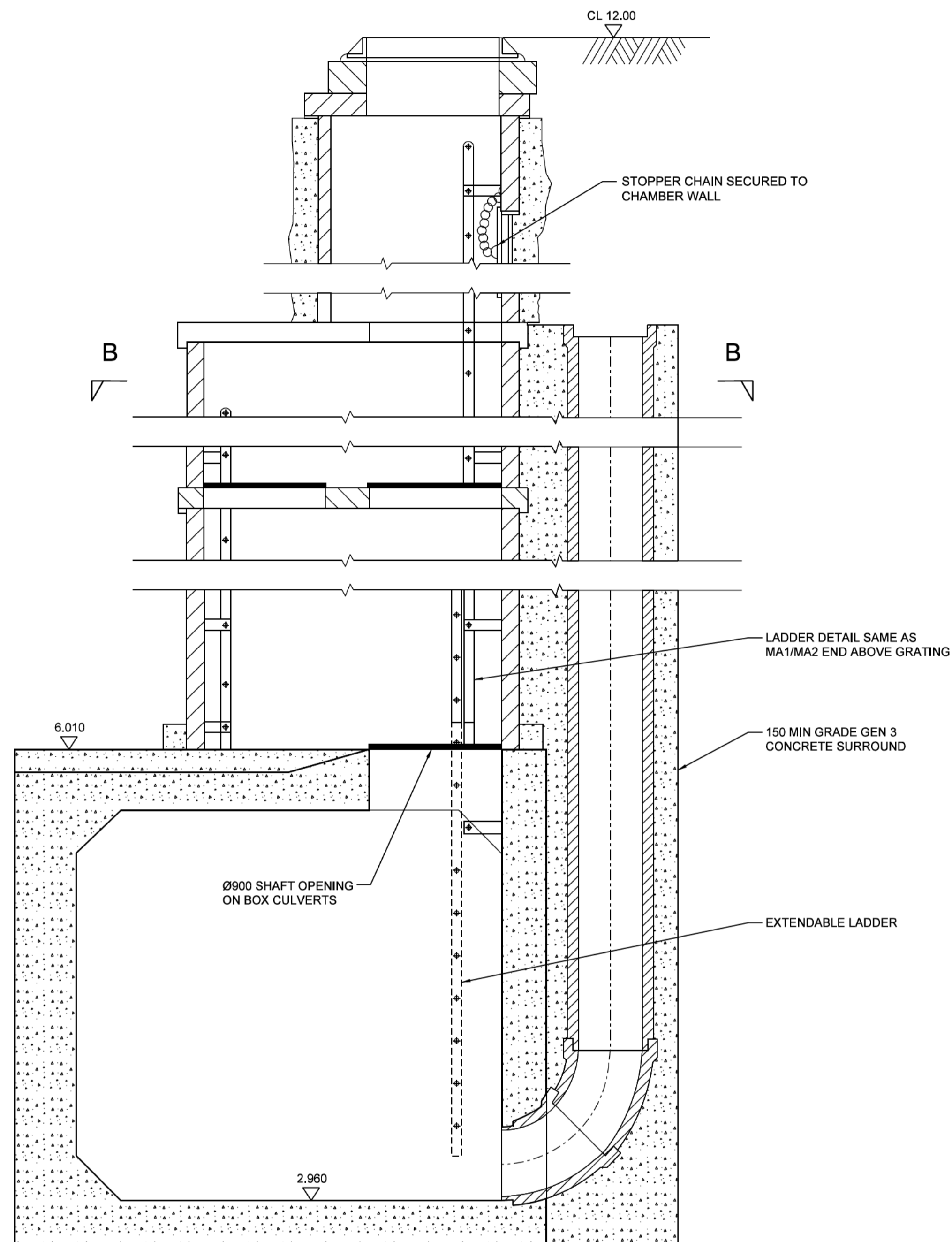
C02



EXISTING MH2 IN FOOTWAY/VERGE



SECTION B - B
CONNECTION DETAIL TO EXISTING MANHOLE MH5



TYPICAL SECTION THROUGH EXISTING SHAFT No 5
BACKDROP DETAIL

Copyright: London Legacy Development Corporation ("LLDC"), 2012. All rights reserved. Except as permitted by the Copyright, Design and Patents Act 1988, no part of this document may be reproduced, stored, transmitted or distributed in any form or by any means, whether electronic, mechanical, by photocopy, recording or otherwise, without prior permission of a director. Except where otherwise expressly agreed in writing, the LLDC shall have no responsibility or liability for any loss (direct, consequential or otherwise) which may arise from the reliance on or use of this document or the information contained in it.

Do not scale this drawing.

Notes:

- ALL DIMENSIONS ARE IN MILLIMETERS UNLESS OTHERWISE STATED
- MORTAR TO BE DESIGNATION (i) TO SHW 2400 SERIES
- GRADE GENO CONCRET BACKFILL TO BE USED WHERE MECHANICAL COMPACTION IS IMPRACTICABLE
- FOR DETAILS OF LADDER SEE MCDHW HCD F10
- PIPES AND JOINTS ADJACENT TO CHAMBER TO BE IN ACCORDANCE WITH SHW CL 507.17
- FOR DETAILS OF HINGED GRATING SEE MCDHW HCD F9
- FOR DETAILS OF GUARDRAIL SEE MCDHW HCD F28
- COVER SLAB, REDUCING SLAB AND CHAMBER RINGS SHALL BE BEDDED WITH MORTAR, PROPRIETARY BITUMEN OR RESIN MASTIC SEALANT, ALL LIFTING HOLES SHALL BE POINTED
- MAXIMUM DEPTH FROM COVER LEVEL TO FIRST LADDER RUNG IS 675mm
- THE CONTRACTOR SHALL PROVIDE A METHOD STATEMENT FOR THE CONSTRUCTION OF THE SHAFTS TO THE SAFETY AND STABILITY OF THE SHAFTS DURING AND AFTER CONSTRUCTION
- OPENING PROVIDED FOR THE MOVEMENT OF MATERIALS, TOOLS, SAFETY DEVICES, CASUALTIES AND FOR USE IN PUMPING/JETTING AND OTHER MAINTENANCE OPERATIONS IN ACCORDANCE WITH BS EN 752-3 : 1997 CLAUSE NB 4.6
- FOR SEQUENCING OF CONSTRUCTION ACTIVITIES REFER TO SPECIFICATION APPENDIX 1/13
- MANHOLE COVER LEVELS SHOWN ARE APPROXIMATE ONLY. FINAL FINISH LEVELS SHALL BE CHECKED AGAINST THE PROPOSED FINISHED GROUND INFORMATION SHOWN ON APPROPRIATE HIGHWAY/LANDSCAPE PLANS

C02	For Construction Detailed Design B/B +	21/06/13
C01	FOR CONSTRUCTION	09/11/12

Rev	Description	Drawn	Chk'd	Date

Safety, Health and Environment Information
In addition to the hazards / risks normally associated with the types of work detailed on this drawing, note the following risks and information:

Construction	CL	
	CH	
	CB	
Dismantling / Demolition (Future)	DL	
	DF	

For information relating to Use, Cleaning and Maintenance see the Health and Safety File. It is assumed that all works will be carried out by a competent contractor working, where appropriate, to an approved method statement.

Prepared by
Capita Symonds
on behalf of BAM Nuttall Ltd

Creator
Prepared by
BAM Nuttall Ltd
on behalf of the LLDC

Drawing Title
Olympic Park
Infrastructure
Surface Water & Foul Drainage
Proposed Hennikers Ditch Connection Detail

Project Title
QEOP LEGACY TRANSFORMATION

Drawn	Checked	Approved

Date	Scale	Size
05/11/2012		A1

Purpose of Drawing	Suitability
For Construction	A

Drawing No.	Sheet	Rev.
LC401-LCI-APK-CD-DDE-0515	-	C02

PLOT TIME: \$PLOTTIME \$PLOTDATE \$PLOTDATE \$FILENAME

Security Classification Protect

This map is reproduced from Ordnance Survey Material with the permission of Ordnance Survey on behalf of the Controller of Her Majesty's Stationery Office. © Crown Copyright. Unauthorised reproduction infringes Crown Copyright and may lead to prosecution or civil proceedings. All rights reserved. London Legacy Development Corporation, 10004602 (2011)

0605

FOR CONTINUATION SEE DRG LC401-LC-NPK-CD-DGA-0508

EX-RG

CP9

S6611

S6610

G 6.38

G 6.40

Cover plate to be placed on top of existing CKD base unit across proposed crossing. Refer to drawing LC401-LC-APK-CG-DDE-0514

Existing Hennikers ditch

Connection to Hennikers ditch via existing manhole MH2 subject to EA approval

200mm high swale dam @ 10.5m c/c

Connection to Hennikers ditch via existing manhole MH5 subject to EA approval

Temporary drainage to be provided for existing development plot

FOR CONTINUATION SEE DRG LC401-LC-NPK-CD-DGA-0513

EX-SW

400

CRANBURY

GORDON ROAD



Copyright: London Legacy Development Corporation ("LLDC"), 2012. All rights reserved. Except as permitted by the Copyright, Design and Patents Act 1988, no part of this document may be reproduced, stored, transmitted or distributed in any form or by any means, whether electronic, mechanical, by photocopy, recording or otherwise, without prior permission of a director. Except where otherwise expressly agreed in writing, the LLDC shall have no responsibility or liability for any loss (direct, consequential or otherwise) which may arise from the reliance on or use of this document or the information contained in it.

Do not scale this drawing.
Notes:

Key Plan



Notes
1. Refer to drawing number LC401-LC-APK-CD-DGA-0500 for Legend and notes.

Safety, Health and Environmental Information
A review of the existing Health and Safety File records indicates that park wide there are risks from buried services, contaminated ground beneath the marker layer, contaminated silt and ground water, flooding in riverside areas, adjacent railtrack facilities and unexploded ordnance.

ALL INFORMATION SHOWN ON THIS DRAWING MUST BE VERIFIED AGAINST THE RESULTS OF A SITE SURVEY AND FINAL AS-BUILT INFORMATION PRIOR TO THE START OF ANY PROCUREMENT, FABRICATION DESIGN OR CONSTRUCTION. ANY VARIATIONS FROM AS-BUILT INFORMATION AND SITE SURVEY MUST BE REFERRED TO CAPITA SYMONDS LTD AND THEIR APPROVAL MUST BE OBTAINED PRIOR TO COMMENCEMENT OF ANY FABRICATION DESIGN OR CONSTRUCTION WORKS.

Z01	AS-BUILT RECORD	28/02/14
C05	N-CI-00197 Incorporated	12/12/13
C04	N-CI-00148 Incorporated	23/08/13
C03	For Construction Detailed Design B/B +	21/08/13
C02	For Construction	21/12/12
C01	For Construction	13/11/12
P02	BNL comments incorporated	03/08/12
P01	For Information	25/06/12

Safety, Health and Environment Information
In addition to the hazards / risks normally associated with the types of work detailed on this drawing, note the following risks and information:

Construction	CL CII CIII
Dismantling / Demolition (Future)	DL DII DIII

For information relating to Use, Cleaning and Maintenance see the Health and Safety File. It is assumed that all works will be carried out by a competent contractor working, where appropriate, to an approved method statement.

Prepared by
Capita Symonds
on behalf of BAM Nuttall Ltd

Creator
Prepared by
BAM Nuttall Ltd
on behalf of the LLDC

Drawing Title
Olympic North Park
Infrastructure
Surface Water & Foul Water Drainage
General Arrangement Sheet 9

Project Title
QEOP LEGACY TRANSFORMATION

Drawn	Checked	Approved

Date	Scale	Size
28/02/14	1:500	A1

Purpose of Drawing	Subsidiarity
AS-BUILT	R
Drawing No.	Sheet, Rev.
LC401-LC-NPK-CD-DGA-0509	- Z01

THIS RECORD DRAWING IS BASED ON INFORMATION PROVIDED BY BAM NUTTALL LTD AND ACCEPTED BY THE PROJECT MANAGER (MACE).
Provided by: BAM NUTTALL LTD
Drawing No.: LC401-LC-NPK-CD-DGA-0509
Revision No: X01

DRG LC401-LC-NPK-CD-DGA-0520

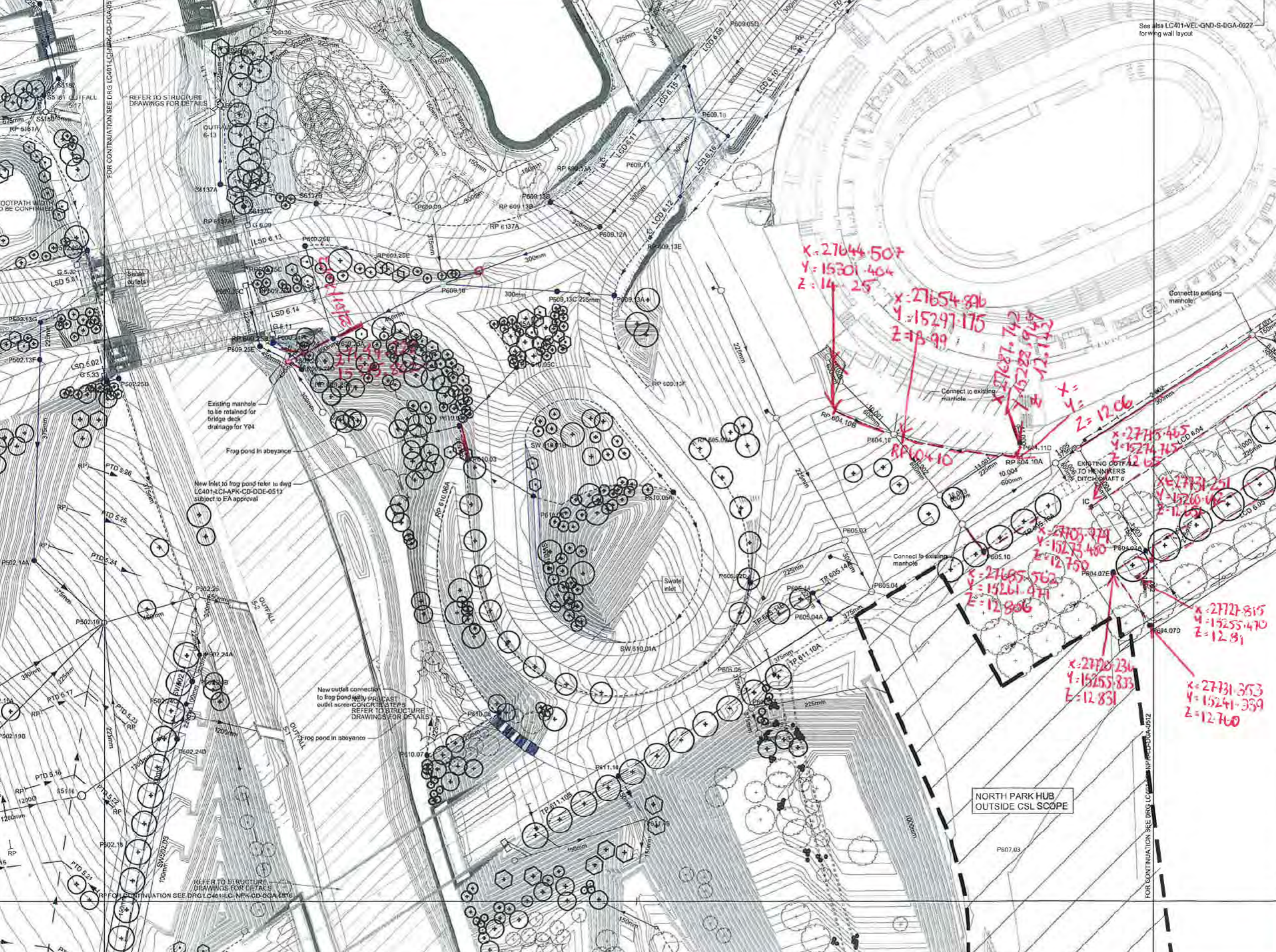
PLOT TIME: \$PLOTTIME

PLOT DATE: \$PLOTDATE

FILENAME: \$FILENAME

Security Classification Protect

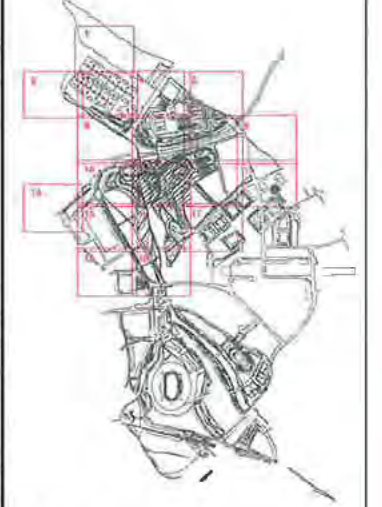
1. This drawing is the property of the London Legacy Development Corporation (LLDC) and is not to be reproduced, stored in a retrieval system, or transmitted in any form or by any means, whether electronic, mechanical, photocopying, recording or otherwise, without the prior written permission of the LLDC. All rights reserved. Copyright © 2012 LLDC. All rights reserved.



Copyright: London Legacy Development Corporation (LLDC) 2012. All rights reserved. Except as permitted by the Copyright, Design and Patents Act 1988, no part of this document may be reproduced, stored in a retrieval system, or transmitted in any form or by any means, whether electronic, mechanical, photocopying, recording or otherwise, without the prior written permission of a director. Except where otherwise expressly agreed in writing, the LLDC shall have no responsibility or liability for any loss (direct, consequential or otherwise) which may arise from the reliance on or use of this document or the information contained in it.

Do not scale this drawing.
Notes:

Key Plan



Notes
1. Refer to drawing number LC401-LCI-NPK-CD-DGA-0500 for Legend and notes.

Safety, Health and Environmental Information
A review of the existing Health and Safety File records indicates that particular risks are risks from buried services, contaminated ground beneath the marker layer, contamination and ground water, flooding in riverbank areas, adjacent rail track facilities and unexploded ordnance.

ALL INFORMATION SHOWN ON THIS DRAWING MUST BE VERIFIED AGAINST THE RESULTS OF A SITE SURVEY AND FINAL AS-BUILT INFORMATION PRIOR TO THE START OF ANY PROCUREMENT, FABRICATION DESIGN OR CONSTRUCTION. ANY VARIATIONS FROM AS-BUILT INFORMATION AND SITE SURVEY MUST BE REFERRED TO CAPITA SYMONDS LTD AND THEIR APPROVAL MUST BE OBTAINED PRIOR TO COMMENCEMENT OF ANY FABRICATION DESIGN OR CONSTRUCTION WORKS.

Rev	Description	Drawn (I-Id)	CHK
002	For Construction	21/09/12	
001	For Construction	13/11/12	
002	BAL comments incorporated	03/09/12	
001	For Information	25/06/12	

Safety, Health and Environment Information
In addition to the hazards / risks normally associated with the types of work detailed on this drawing, note the following risks and instructions:
Construction:
Excavation / Demolition (FUTURE):
For information relating to the Clearing and Maintenance see the Health and Safety File. It is assumed that all works will be carried out by a competent contractor working, where appropriate, to an approved method statement.

Prepared by
Capita Symonds
on behalf of BAM Nuttall Ltd

Created by
BAM Nuttall Ltd
on behalf of the LLDC

Drawing Title
Olympic North Park
Infrastructure
Surface Water & Foul Drainage
General Arrangement Sheet 11

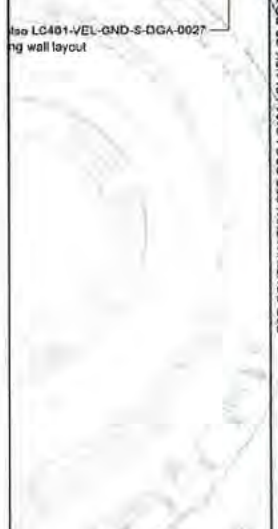
Project Title QEOP LEGACY TRANSFORMATION			
Drawn	Checked	Approved	
s.40	s.40	s.40	
Date	Scale	Size	
22/06/2012	1:500	A1	
Purpose of Drawing	Subsidiary	Sheet	
As Built For Construction	AB	602	
Drawing No.	Sheet	Rev	
LC401-LCI-NPK-CD-DGA-0511	602	602	

Security Classification Protect

This drawing is the property of Capita Symonds Limited. It is not to be reproduced, stored, transmitted or distributed in any form or by any means, without the prior written permission of Capita Symonds Limited. All rights reserved. Capita Symonds Limited is not responsible for any loss (direct, consequential or otherwise) which may arise from the reliance on or use of this document or the information contained in it.

Do not scale this drawing. Notes:

Key Plan



Notes

1. Refer to drawing number LC401-LCI-NPK-CD-DGA-0500 for Legend and notes.

Safety, Health and Environmental Information

A review of the existing Health and Safety File records indicates that park wide there are risks from buried services, contaminated ground beneath the marker layer, contaminated silt and ground water, flooding in riverside areas, adjacent railtrack facilities and unexploded ordnance.

ALL INFORMATION SHOWN ON THIS DRAWING MUST BE VERIFIED AGAINST THE RESULTS OF A SITE SURVEY AND FINAL AS-BUILT INFORMATION PRIOR TO THE START OF ANY PROCUREMENT, FABRICATION DESIGN OR CONSTRUCTION. ANY VARIATIONS FROM AS-BUILT INFORMATION AND SITE SURVEY MUST BE REFERRED TO CAPITA SYMONDS LTD AND THEIR APPROVAL MUST BE OBTAINED PRIOR TO COMMENCEMENT OF ANY FABRICATION DESIGN OR CONSTRUCTION WORKS.

Rev Description Drawn CW'd Date

Rev	Description	Drawn	CW'd	Date
S02	For Construction			21/12/12
CD1	For Construction			13/11/12
PD2	BML comments incorporated			03/09/12
PD1	For Information			25/06/12

In addition to the hazards / risks normally associated with the types of work detailed on this drawing, note the following risks and information:

Construction	CM
Dismantling / Demolition (Future)	CM

For information relating to Use, Cleaning and Maintenance see the Health and Safety File. It is assumed that all works will be carried out by a competent contractor working, where appropriate, to an approved method statement.

Prepared by Capita Symonds on behalf of BAM Nuttall Ltd

Creator Prepared by BAM Nuttall Ltd on behalf of the LLDC

Drawing Title Olympic North Park Infrastructure Surface Water & Foul Drainage General Arrangement Sheet 12

Project Title QEOP LEGACY TRANSFORMATION

Drawn s.40 checked s.40 Approved s.40

Date 23/3/13 Scale 1:500 Sheet A1

Purpose of Drawing For Construction Suitability AB

Drawing No. LC401-LCI-NPK-CD-DGA-0512

Sheet No. 02

Revision History

Rev Description Drawn CW'd Date

23/3/13

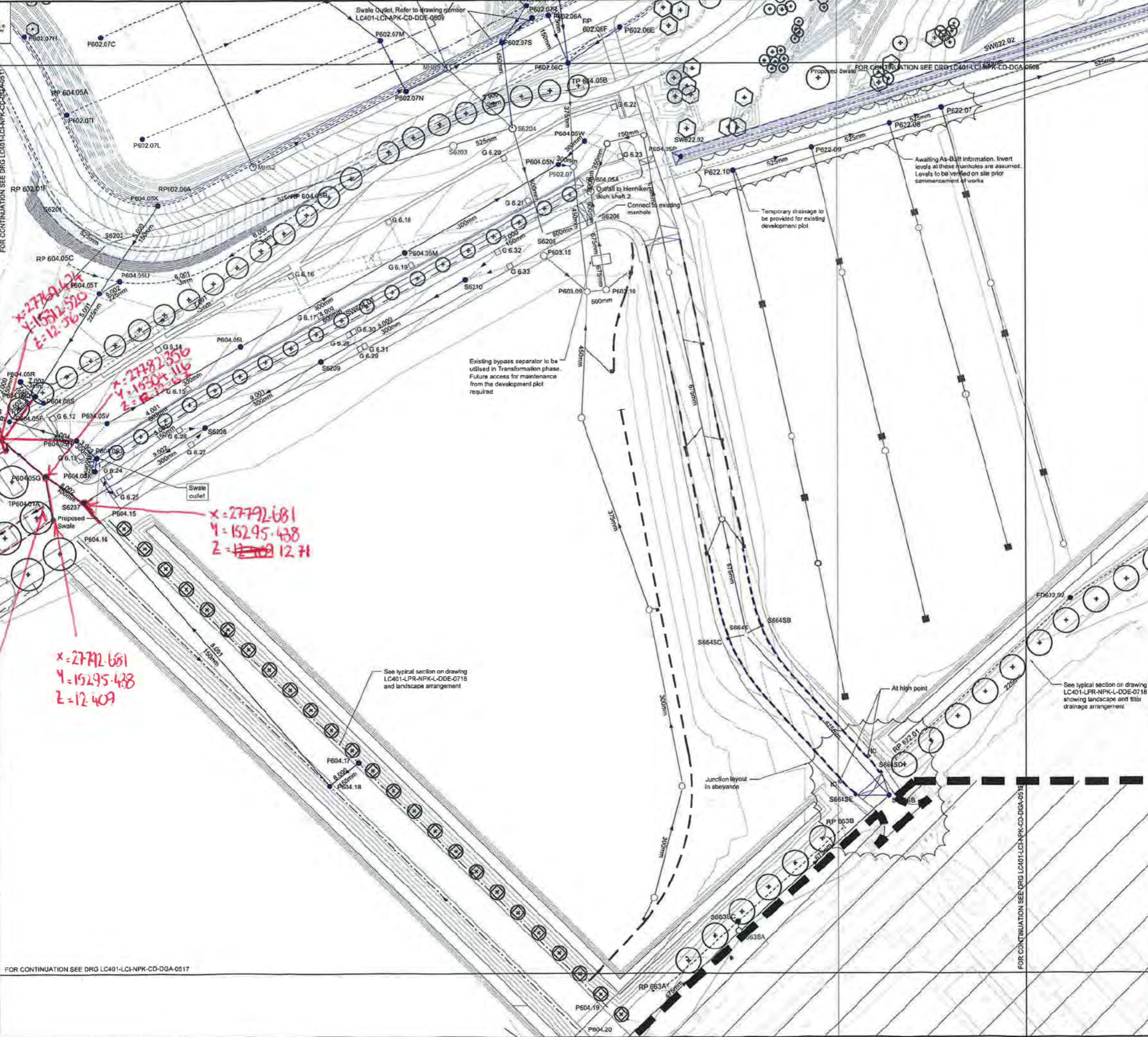
22/06/2012

Scale 1:500

Sheet A1

Purpose of Drawing For Construction Suitability AB

Drawing No. LC401-LCI-NPK-CD-DGA-0512



FOR CONTINUATION SEE DRG LC401-LCI-NPK-CD-DGA-0517

FOR CONTINUATION SEE DRG LC401-LCI-NPK-CD-DGA-0512

Copyright London Legacy Development Corporation (LLDC) 2012. All rights reserved. Except as permitted by the Copyright, Design and Patents Act 1988, no part of this document may be reproduced, stored, transmitted or distributed in any form or by any means, without the prior written permission of London Legacy Development Corporation. All rights reserved. London Legacy Development Corporation is not responsible for any loss (direct, consequential or otherwise) which may arise from the reliance on or use of this document or the information contained in it.

Do not scale this drawing. Notes:

Key Plan

Notes

1. Refer to drawing number LC401-LCI-NPK-CD-DGA-0500 for Legend and notes.

Safety, Health and Environmental Information

A review of the existing Health and Safety File records indicates that park wide there are risks from buried services, contaminated ground beneath the marker layer, contaminated silt and ground water, flooding in riverside areas, adjacent railtrack facilities and unexploded ordnance.

ALL INFORMATION SHOWN ON THIS DRAWING MUST BE VERIFIED AGAINST THE RESULTS OF A SITE SURVEY AND FINAL AS-BUILT INFORMATION PRIOR TO THE START OF ANY PROCUREMENT, FABRICATION DESIGN OR CONSTRUCTION. ANY VARIATIONS FROM AS-BUILT INFORMATION AND SITE SURVEY MUST BE REFERRED TO CAPITA SYMONDS LTD AND THEIR APPROVAL MUST BE OBTAINED PRIOR TO COMMENCEMENT OF ANY FABRICATION DESIGN OR CONSTRUCTION WORKS.

Rev Description Drawn CW'd Date

Rev	Description	Drawn	CW'd	Date
S02	For Construction			21/12/12
CD1	For Construction			13/11/12
PD2	BML comments incorporated			03/09/12
PD1	For Information			25/06/12

In addition to the hazards / risks normally associated with the types of work detailed on this drawing, note the following risks and information:

Construction	CM
Dismantling / Demolition (Future)	CM

For information relating to Use, Cleaning and Maintenance see the Health and Safety File. It is assumed that all works will be carried out by a competent contractor working, where appropriate, to an approved method statement.

Prepared by Capita Symonds on behalf of BAM Nuttall Ltd

Creator Prepared by BAM Nuttall Ltd on behalf of the LLDC

Drawing Title Olympic North Park Infrastructure Surface Water & Foul Drainage General Arrangement Sheet 12

Project Title QEOP LEGACY TRANSFORMATION

Drawn s.40 checked s.40 Approved s.40

Date 23/3/13 Scale 1:500 Sheet A1

Purpose of Drawing For Construction Suitability AB

Drawing No. LC401-LCI-NPK-CD-DGA-0512

Sheet No. 02

Revision History

Rev Description Drawn CW'd Date

23/3/13

22/06/2012

Scale 1:500

Sheet A1

Purpose of Drawing For Construction Suitability AB

Drawing No. LC401-LCI-NPK-CD-DGA-0512

Sheet No. 02

x=27780.124
y=15302.520
z=12.36

x=27782.356
y=15304.116
z=12.36

x=27769.405
y=15309.745
z=12.07

x=27792.681
y=15295.438
z=12.71

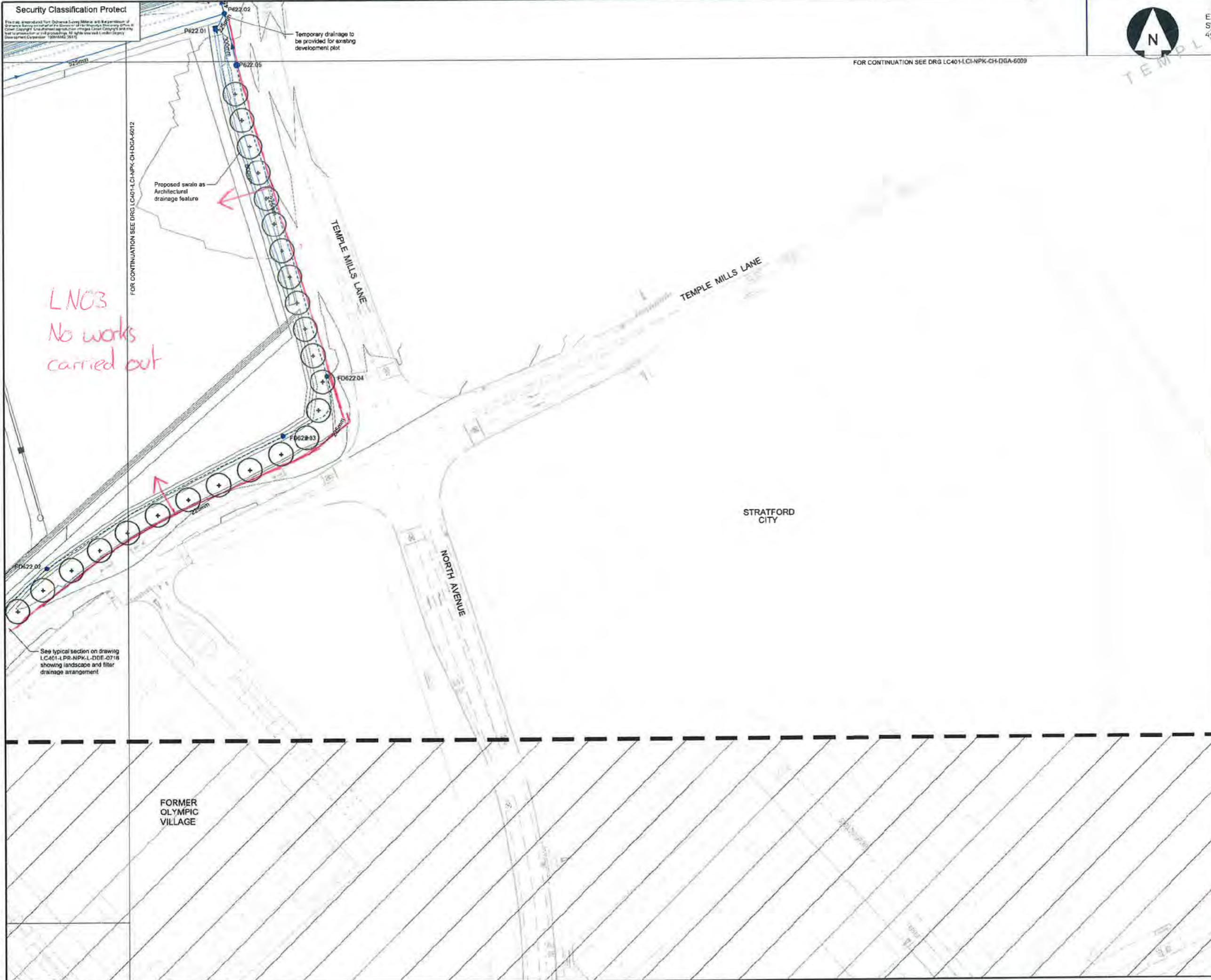
x=27792.681
y=15295.438
z=12.409

x=27780.716
y=15295.007
z=12.70

FOR CONTINUATION SEE DRG LC401-LCI-NPK-CD-DGA-0517

FOR CONTINUATION SEE DRG LC401-LCI-NPK-CD-DGA-0512

PLOT TIME: \$PLOTTIME
PLOT DATE: \$PLOTDATE
FILE NAME: \$FILENAME



Copyright: London Legacy Development Corporation (LLDC), 2012. All rights reserved. Except as permitted by the Copyright, Design and Patents Act 1988, no part of this document may be reproduced, stored, transmitted or distributed in any form or by any means, whether electronic, mechanical, by photocopying, recording or otherwise, without prior permission of a director. Except where otherwise expressly agreed in writing, the LLDC shall have no responsibility for liability for any loss (direct, consequential or otherwise) which may arise from the reliance on or use of this document or the information contained in it.

EX SW 440

Do not scale this drawing.

Notes:

Key Plan

Notes

1. Refer to drawing number LC401-LCI-APK-CD-DGA-0500 for Legend and notes

Safety, Health and Environmental Information

A review of the existing Health and Safety File records indicates that park wide there are risks from buried services, contaminated ground beneath the marker layer, contaminated soil and ground water, flooding in riverside areas, adjacent railtrack facilities and unexploded ordnance.

ALL INFORMATION SHOWN ON THIS DRAWING MUST BE VERIFIED AGAINST THE RESULTS OF A SITE SURVEY AND FINAL AS-BUILT INFORMATION PRIOR TO THE START OF ANY PROCUREMENT, FABRICATION DESIGN OR CONSTRUCTION. ANY VARIATIONS FROM AS-BUILT INFORMATION AND SITE SURVEY MUST BE REFERRED TO CAPITA SYMONDS LTD AND THEIR APPROVAL MUST BE OBTAINED PRIOR TO COMMENCEMENT OF ANY FABRICATION DESIGN OR CONSTRUCTION WORKS.

C02	For Construction	S.40	21/12/12
C01	For Construction		13/11/12
P02	BNL comments incorporated		03/06/12
P01	For information		25/06/12

Rev Description Drawn (S&K) Date

Safety, Health and Environment Information

In addition to the hazards / risks normally associated with the types of work detailed on this drawing, note the following risks and information:

Construction	C1 C2 C3
Dismantling / Demolition (Future)	D1 D2

For information relating to Use, Cleaning and Maintenance see the Health and Safety File. It is assumed that all works will be carried out by a competent contractor working, where appropriate, to an approved method statement.

Prepared by
Capita Symonds
on behalf of BAM Nuttall Ltd

Creator
Prepared by
BAM Nuttall Ltd
on behalf of the LLDC

Drawing Title
Olympic North Park
Infrastructure
Surface Water & Foul Drainage
General Arrangement Sheet 13

Project Title
QEOP LEGACY TRANSFORMATION

Drawn	Checked	Approved
S.40	S.40	S.40
Date 12/06/13	Scale 1:500	Size A1
22/06/2012		

Purpose of Drawing
As built For Construction
Suitability
AB

Drawing No
LC401-LCI-NPK-CD-DGA-0513
Sheet
13
Scale
A1
Rev
C02

Security Classification Protect

This map is reproduced from Ordnance Survey Material with the permission of Ordnance Survey on behalf of the Controller of Her Majesty's Stationery Office. © Crown Copyright. Unauthorised reproduction infringes Crown Copyright and may lead to prosecution or civil proceedings. All rights reserved. London Legacy Development Corporation, 1006602/2011



LN03
NO WORKS
CARRIED OUT

THIS RECORD DRAWING IS BASED ON INFORMATION PROVIDED BY BAM NUTTALL LTD AND ACCEPTED BY THE PROJECT MANAGER (MACE).
Provided by: BAM NUTTALL LTD
Drawing No.: LC401-LCI-NPK-CD-DGA-0516
Revision No: X03

FOR CONTINUATION SEE DRG LC401-LCI-NPK-CH-DGA-6011

FOR CONTINUATION SEE DRG LC401-LCI-NPK-CH-DGA-6015

FOR CONTINUATION SEE DRG LC401-LCI-NPK-CH-DGA-6019

Copyright: London Legacy Development Corporation ("LLDC"), 2012. All rights reserved. Except as permitted by the Copyright, Design and Patents Act 1988, no part of this document may be reproduced, stored, transmitted or distributed in any form or by any means, whether electronic, mechanical, by photocopy, recording or otherwise, without prior permission of a director. Except where otherwise expressly agreed in writing, the LLDC shall have no responsibility or liability for any loss (direct, consequential or otherwise) which may arise from the reliance on or use of this document or the information contained in it.

Do not scale this drawing.
Notes:

Key Plan



Notes
1. Refer to drawing number LC401-LCI-APK-CD-DGA-0500 for Legend and notes.

Safety, Health and Environmental Information
A review of the existing Health and Safety File records indicates that park wide there are risks from buried services, contaminated ground beneath the marker layer, contaminate silt and ground water, flooding in riverside areas, adjacent railtrack facilities and unexploded ordnance.

ALL INFORMATION SHOWN ON THIS DRAWING MUST BE VERIFIED AGAINST THE RESULTS OF A SITE SURVEY AND FINAL AS-BUILT INFORMATION PRIOR TO THE START OF ANY PROCUREMENT, FABRICATION DESIGN OR CONSTRUCTION. ANY VARIATIONS FROM AS-BUILT INFORMATION AND SITE SURVEY MUST BE REFERRED TO CAPITA SYMONDS LTD AND THEIR APPROVAL MUST BE OBTAINED PRIOR TO COMMENCEMENT OF ANY FABRICATION DESIGN OR CONSTRUCTION WORKS.

Z01	AS-BUILT RECORD	14/02/14
C02	For Construction	21/12/12
C01	For Construction	13/11/12
P02	BNL comments incorporated	03/08/12
P01	For Information	25/06/12

Rev	Description	Drawn	Chk'd	Date

Safety, Health and Environment Information
In addition to the hazards / risks normally associated with the types of work detailed on this drawing, note the following risks and information:

Construction	C1 C2 C3
Dismantling / Demolition (Future)	D1 D2

For information relating to Use, Cleaning and Maintenance see the Health and Safety File. It is assumed that all works will be carried out by a competent contractor working, where appropriate, to an approved method statement.

Prepared by
Capita Symonds
on behalf of BAM Nuttall Ltd

Creator
Prepared by
BAM Nuttall Ltd
on behalf of the LLDC

Drawing Title
Olympic North Park
Infrastructure
Surface Water & Foul Drainage
General Arrangement Sheet 16

Project Title QEOP LEGACY TRANSFORMATION			
Drawn	Checked	Approved	
14/02/14	1:500	A1	
Date	Scale	Size	
Purpose of Drawing AS-BUILT		Suitability	R
Drawing No. LC401-LCI-NPK-CD-DGA-0516	Sheet	Rev.	Z01

PLOT TIME: \$PLOTTIME
PLOT DATE: \$PLOTDATE
FILENAME: \$FILENAME

