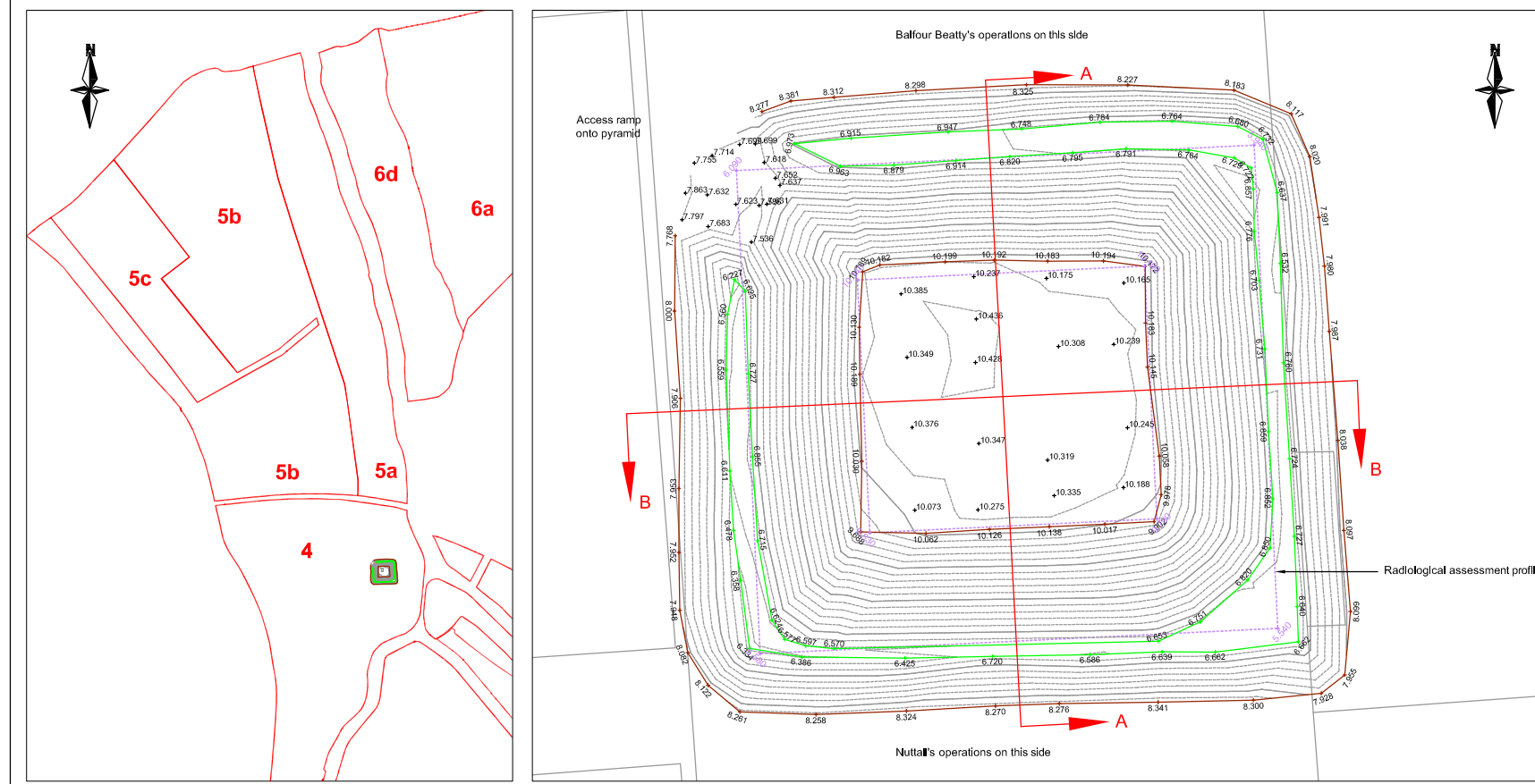




Japanese knotweed exempt fill with barrier membrane (black coloured) to the top and sides

- Proposed Scenario13b finished ground levels
- Enabling Works formation level
- Enabling Works subformation level
- Class 1A fill handed over by Morrison Construction Ltd to Bam Nuttall Ltd
- Exempt fill marker layer levels
- Radiological assessment profile
- Subgrade handed over by Bam Nuttall Ltd to Morrison Construction Ltd
- Marker layer

Cross Section B-B



© Olympic Delivery Authority ("ODA"), 2006. All rights reserved. Except as permitted by the Copyright, Designs and Patents Act 1998, no part of this document may be reproduced, stored, transmitted or distributed in any form or by any means, whether electronic, mechanical, by photocopy, recording or otherwise, without the prior written permission of a director. Except where otherwise expressly agreed in writing, the ODA shall have no responsibility or liability for any loss (direct, consequential or otherwise) which may arise from reliance on or use of this document or the information contained in it.

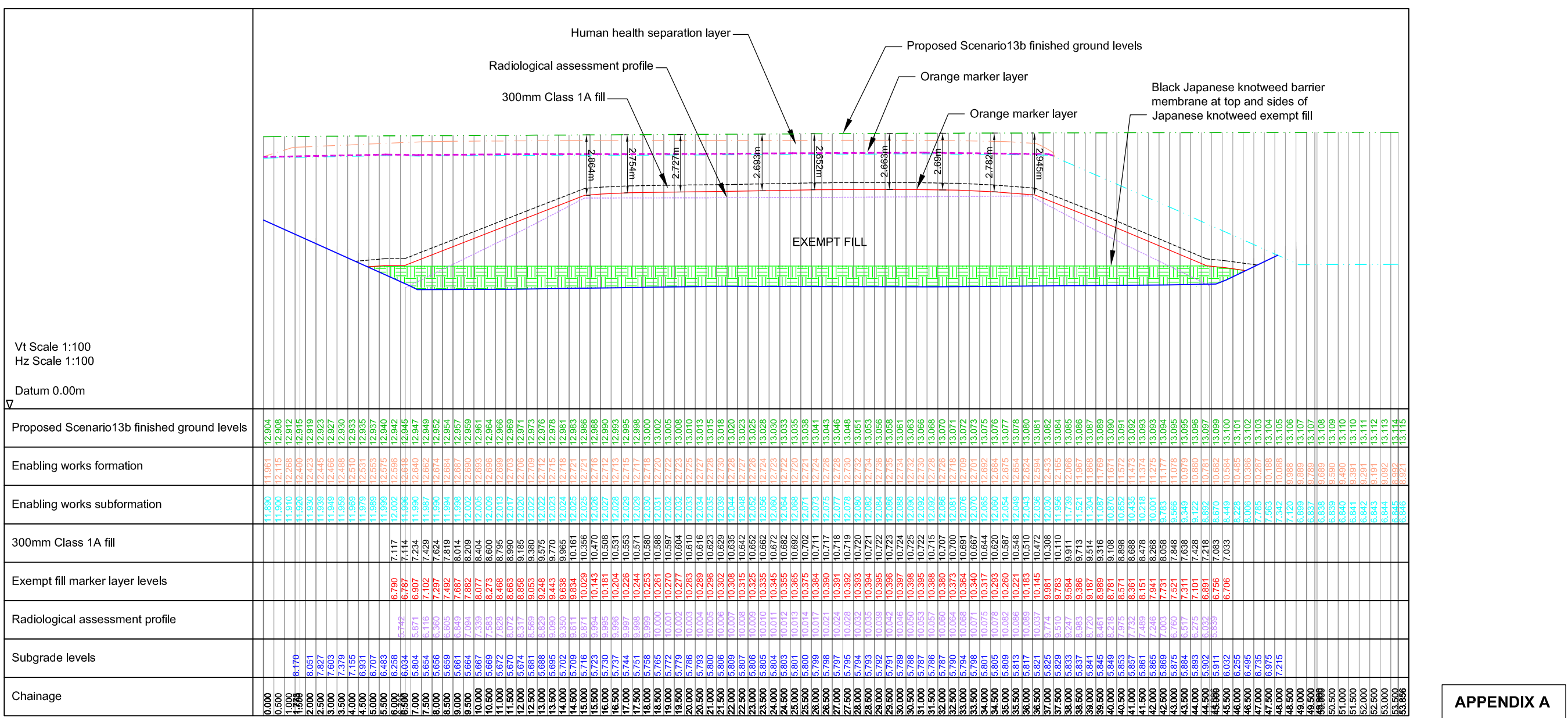
DO NOT SCALE THIS DRAWING.

NOTES

KEY	
	Bottom of batter
	Top of batter

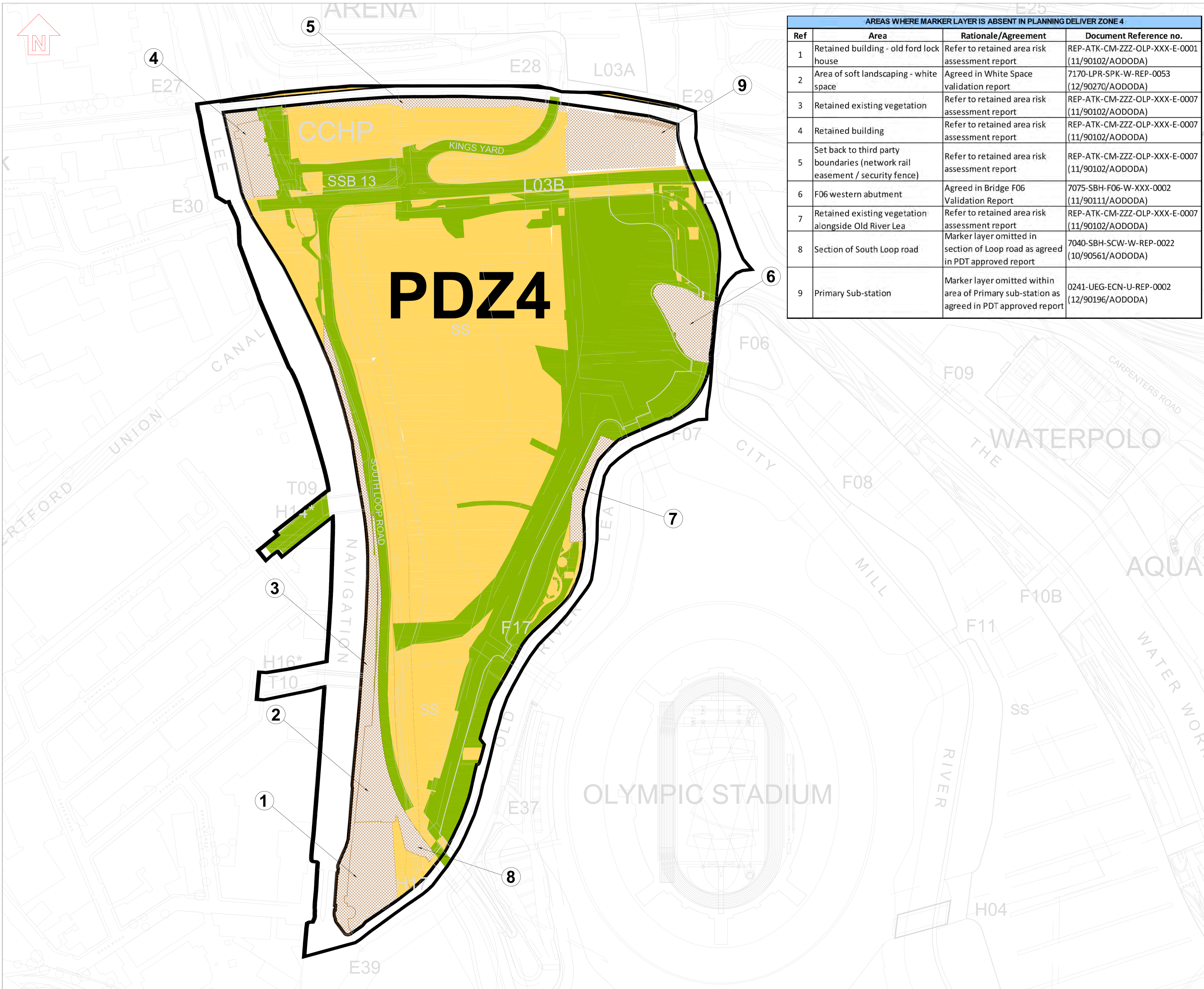
For formation and subformation information, refer to Bam Nuttall Ltd drawings:
 2DD-ENL-CK-04Z-OLP-SP1-E-0427
 2DD-ENL-CK-04Z-OLP-SP1-E-0428
 2DD-ENL-CK-04Z-OLP-SP1-E-0429

Bam Nuttall Ltd prepared the subgrade surface then Morrison Construction Ltd placed exempt fill material topped by 300mm of Class 1A. Finally, Bam Nuttall Ltd delivered the site to Enabling Works levels using Class 1 and 2 materials. Enabling Works handover to follow on contractor December 2008



Vt Scale 1:100
 Hz Scale 1:100
 Datum 0.00m

Proposed Scenario13b finished ground levels	12.904	11.961	12.908	12.115	12.908	12.912	12.916	12.919	12.923	12.927	12.930	12.933	12.935	12.937	12.940	12.942	12.945	12.947	12.949	12.952	12.954	12.957	12.959	12.961	12.963	12.965	12.967	12.969	12.971	12.973	12.976	12.978	12.981	12.983	12.986	12.988	12.990	12.992	12.994	12.996	12.998	13.000	13.002	13.004	13.006	13.008	13.010	13.013	13.015	13.018	13.020	13.023	13.025	13.028	13.030	13.033	13.035	13.038	13.040	13.043	13.045	13.048	13.050	13.053	13.055	13.058	13.060	13.063	13.065	13.068	13.070	13.073	13.076	13.078	13.081	13.083	13.086	13.088	13.090	13.092	13.094	13.096	13.098	13.100	13.103	13.105	13.108	13.110	13.113	13.115																																																																																																																																																																																																																																																																																																																																																																																																																																																																																																																																																																																																																																																																																																																																																																																																																																																													
Enabling works formation	11.890	11.910	11.930	11.950	11.970	11.990	12.010	12.030	12.050	12.070	12.090	12.110	12.130	12.150	12.170	12.190	12.210	12.230	12.250	12.270	12.290	12.310	12.330	12.350	12.370	12.390	12.410	12.430	12.450	12.470	12.490	12.510	12.530	12.550	12.570	12.590	12.610	12.630	12.650	12.670	12.690	12.710	12.730	12.750	12.770	12.790	12.810	12.830	12.850	12.870	12.890	12.910	12.930	12.950	12.970	12.990	13.010	13.030	13.050	13.070	13.090	13.110	13.130	13.150	13.170	13.190	13.210	13.230	13.250	13.270	13.290	13.310	13.330	13.350	13.370	13.390	13.410	13.430	13.450	13.470	13.490	13.510	13.530	13.550	13.570	13.590	13.610	13.630	13.650	13.670	13.690	13.710	13.730	13.750	13.770	13.790	13.810	13.830	13.850	13.870	13.890	13.910	13.930	13.950	13.970	13.990	14.010	14.030	14.050	14.070	14.090	14.110	14.130	14.150	14.170	14.190	14.210	14.230	14.250	14.270	14.290	14.310	14.330	14.350	14.370	14.390	14.410	14.430	14.450	14.470	14.490	14.510	14.530	14.550	14.570	14.590	14.610	14.630	14.650	14.670	14.690	14.710	14.730	14.750	14.770	14.790	14.810	14.830	14.850	14.870	14.890	14.910	14.930	14.950	14.970	14.990	15.010	15.030	15.050	15.070	15.090	15.110	15.130	15.150	15.170	15.190	15.210	15.230	15.250	15.270	15.290	15.310	15.330	15.350	15.370	15.390	15.410	15.430	15.450	15.470	15.490	15.510	15.530	15.550	15.570	15.590	15.610	15.630	15.650	15.670	15.690	15.710	15.730	15.750	15.770	15.790	15.810	15.830	15.850	15.870	15.890	15.910	15.930	15.950	15.970	15.990	16.010	16.030	16.050	16.070	16.090	16.110	16.130	16.150	16.170	16.190	16.210	16.230	16.250	16.270	16.290	16.310	16.330	16.350	16.370	16.390	16.410	16.430	16.450	16.470	16.490	16.510	16.530	16.550	16.570	16.590	16.610	16.630	16.650	16.670	16.690	16.710	16.730	16.750	16.770	16.790	16.810	16.830	16.850	16.870	16.890	16.910	16.930	16.950	16.970	16.990	17.010	17.030	17.050	17.070	17.090	17.110	17.130	17.150	17.170	17.190	17.210	17.230	17.250	17.270	17.290	17.310	17.330	17.350	17.370	17.390	17.410	17.430	17.450	17.470	17.490	17.510	17.530	17.550	17.570	17.590	17.610	17.630	17.650	17.670	17.690	17.710	17.730	17.750	17.770	17.790	17.810	17.830	17.850	17.870	17.890	17.910	17.930	17.950	17.970	17.990	18.010	18.030	18.050	18.070	18.090	18.110	18.130	18.150	18.170	18.190	18.210	18.230	18.250	18.270	18.290	18.310	18.330	18.350	18.370	18.390	18.410	18.430	18.450	18.470	18.490	18.510	18.530	18.550	18.570	18.590	18.610	18.630	18.650	18.670	18.690	18.710	18.730	18.750	18.770	18.790	18.810	18.830	18.850	18.870	18.890	18.910	18.930	18.950	18.970	18.990	19.010	19.030	19.050	19.070	19.090	19.110	19.130	19.150	19.170	19.190	19.210	19.230	19.250	19.270	19.290	19.310	19.330	19.350	19.370	19.390	19.410	19.430	19.450	19.470	19.490	19.510	19.530	19.550	19.570	19.590	19.610	19.630	19.650	19.670	19.690	19.710	19.730	19.750	19.770	19.790	19.810	19.830	19.850	19.870	19.890	19.910	19.930	19.950	19.970	19.990	20.010	20.030	20.050	20.070	20.090	20.110	20.130	20.150	20.170	20.190	20.210	20.230	20.250	20.270	20.290	20.310	20.330	20.350	20.370	20.390	20.410	20.430	20.450	20.470	20.490	20.510	20.530	20.550	20.570	20.590	20.610	20.630	20.650	20.670	20.690	20.710	20.730	20.750	20.770	20.790	20.810	20.830	20.850	20.870	20.890	20.910	20.930	20.950	20.970	20.990	21.010	21.030	21.050	21.070	21.090	21.110	21.130	21.150	21.170	21.190	21.210	21.230	21.250	21.270	21.290	21.310	21.330	21.350	21.370	21.390	21.410	21.430	21.450	21.470	21.490	21.510	21.530	21.550	21.570	21.590	21.610	21.630	21.650	21.670	21.690	21.710	21.730	21.750	21.770	21.790	21.810	21.830	21.850	21.870	21.890	21.910	21.930	21.950	21.970	21.990	22.010	22.030	22.050	22.070	22.090	22.110	22.130	22.150	22.170	22.190	22.210	22.230	22.250	22.270	22.290	22.310	22.330	22.350	22.370	22.390	22.410	22.430	22.450	22.470	22.490	22.510	22.530	22.550	22.570	22.590	22.610	22.630	22.650	22.670	22.690	22.710	22.730	22.750	22.770	22.790	22.810	22.830	22.850	22.870	22.890	22.910	22.930	22.950	22.970	22.990	23.010	23.030	23.050	23.070	23.090	23.110	23.130	23.150	23.170	23.190	23.210	23.230	23.250	23.270	23.290	23.310	23.330	23.350	23.370	23.390	23.410	23.430	23.450	23.470	23.490	23.510	23.530	23.550	23.570	23.590	23.610	23.630	23.650	23.670	23.690	23.710	23.730	23.750	23.770	23.790	23.810	23.830	23.850	23.870	23.890	23.910	23.930	23.950	23.970	23.990	24.010	24.030	24.050	24.070	24.090	24.110	24.130	24.150	24.170	24.190	24.210	24.230	24.250	24.270	24.290	24.310	24.330	24.350	24.370	24.390	24.410	24.430	24.450	24.470	24.490	24.510	24.530	24.550	24.570	24.590	24.610	24.630	24.650	24.670	24.690	24.710	24.730	24.750	24.770	24.790	24.810	24.830	24.850	24.870	24.890	24.910	24.930	24.950	24.970	24.990	25.010	25.030	25.050	25.070	25.090	25.110	25.130	25.150	25.170	25.190	25.210	25.230	25.250	25.270	25.290	25.310	25.330	25.350	25.370	25.390	25.410	25.430	25.450	25.470	25.490	25.510	25.530	25.550	25.570	25.590	25.610	25.630	25.650	25.670	25.690	25.710	25.730	25.750	25.770	25.790	25.810	25.830	25.850	25.870	25.890	25.910	25.930	25.950	25.970	25.990	26.010	26.030	26.050	26.070	26.090	26.110	26.130	26.150	26.170	26.190	26.210	26.230	26.250	26.270	26.290	26.310	26.330	26.350	26.370	26.390	26.410	26.430	26.450	26.470	26.490	26.510	26.530	26.550	26.570	26.590	26.610	26.630	26.650	26.670	26.690	26.710	26.730	26.750	26.770	26.790	26.810	26.830	26.850	26.870	26.890	26.910	26.930	26.950	26.970	26.990	27.010	27.030	27.050	27.070	27.090	27.110	27.130	27.150	27.170	27.190	27.210	27.230	27.250	27.270	27.290	27.310	27.330	27.350	27.370	27.390	27.410	27.430	27.450	27.470	27.490	27.510	27.530	27.550	27.570	27.590	27.610	27.630	27.650	27.670	27.690	27.710	27.730	27.750	27.770	27.790	27.810	27.830	27.850	27.870	27.890	27.910	27.930	27.950	27.970	27.990	28.010	28.030	28.050	28.070	28.090	28.110	28.130	28.150	28.170	28.190	28.210	28.230	28.250	28.270	28.290	28.310	28.330	28.350	28.370	28.390	28.410	28.430	28.450	28.470	28.490	28.510	28.530	28.550	28.570	28.590	28.610	28.630	28.650	28.670	28.690	28.710	28.730	28.750	28.770	28.790	28.810	28.830	28.850	28.870	28.890	28.910	28.930	28.950	28.970	28.990	29.010	29.030	29.050	29.070	29.090	29.110	29.130	29.150	29.170	29.190	29.210	29.230	29.250	29.270	29.290	29.310	29.330	29.350	29.370	29.390	29.410	29.430	29.450	29.470	29.490	29.510	29.530	29.550	29.570	29.590	29.610	29.630	29.650	29.670	29.690	29.710	29.730	29.750	29.770	29.790	29.810	29.830	29.850	29.870	29.890	29.910	29.930	29.950	29.970	29.990	30.010	30.030	30.050	30.070	30.090	30.110	30.130	30.150	30.170	30.190	30.210	30.230	30.250</



AREAS WHERE MARKER LAYER IS ABSENT IN PLANNING DELIVER ZONE 4			
Ref	Area	Rationale/Agreement	Document Reference no.
1	Retained building - old ford lock house	Refer to retained area risk assessment report	REP-ATK-CM-ZZZ-OLP-XXX-E-0001 (11/90102/AODODA)
2	Area of soft landscaping - white space	Agreed in White Space validation report	7170-LPR-SPK-W-REP-0053 (12/90270/AODODA)
3	Retained existing vegetation	Refer to retained area risk assessment report	REP-ATK-CM-ZZZ-OLP-XXX-E-0007 (11/90102/AODODA)
4	Retained building	Refer to retained area risk assessment report	REP-ATK-CM-ZZZ-OLP-XXX-E-0007 (11/90102/AODODA)
5	Set back to third party boundaries (network rail easement / security fence)	Refer to retained area risk assessment report	REP-ATK-CM-ZZZ-OLP-XXX-E-0007 (11/90102/AODODA)
6	F06 western abutment	Agreed in Bridge F06 Validation Report	7075-SBH-F06-W-XXX-0002 (11/90111/AODODA)
7	Retained existing vegetation alongside Old River Lea	Refer to retained area risk assessment report	REP-ATK-CM-ZZZ-OLP-XXX-E-0007 (11/90102/AODODA)
8	Section of South Loop road	Marker layer omitted in section of Loop road as agreed in PDT approved report	7040-SBH-SCW-W-REP-0022 (10/90561/AODODA)
9	Primary Sub-station	Marker layer omitted within area of Primary sub-station as agreed in PDT approved report	0241-UEG-ECN-U-REP-0002 (12/90196/AODODA)

Legend

- Planning Delivery Zone (PDZ4) Boundary
- Marker Layer Placed or Replaced by Follow On Contractors
- Marker Layer placed by Enabling Works
- Marker Layer Absent

No.	Description	Apvr	N	DD/NN/YY
Rev	Description	Drawn	Chk'd	Date

Safety, Health and Environment Information

In addition to the hazards / risks normally associated with the types of work detailed on this drawing, note the following risks and information:

Construction	Cl, Cill, Cill
Dismantling / Demolition (Future)	Dl, Dll, Dlll

For information relating to Use, Cleaning and Maintenance see the Health and Safety File. It is assumed that all works will be carried out by a competent contractor working, where appropriate, to an approved method statement.

Creator

Prepared by
ATKINS
On behalf of the ODA

Drawing Title

Figure 6: Extent of Marker Layer Within Planning Delivery Zone 4

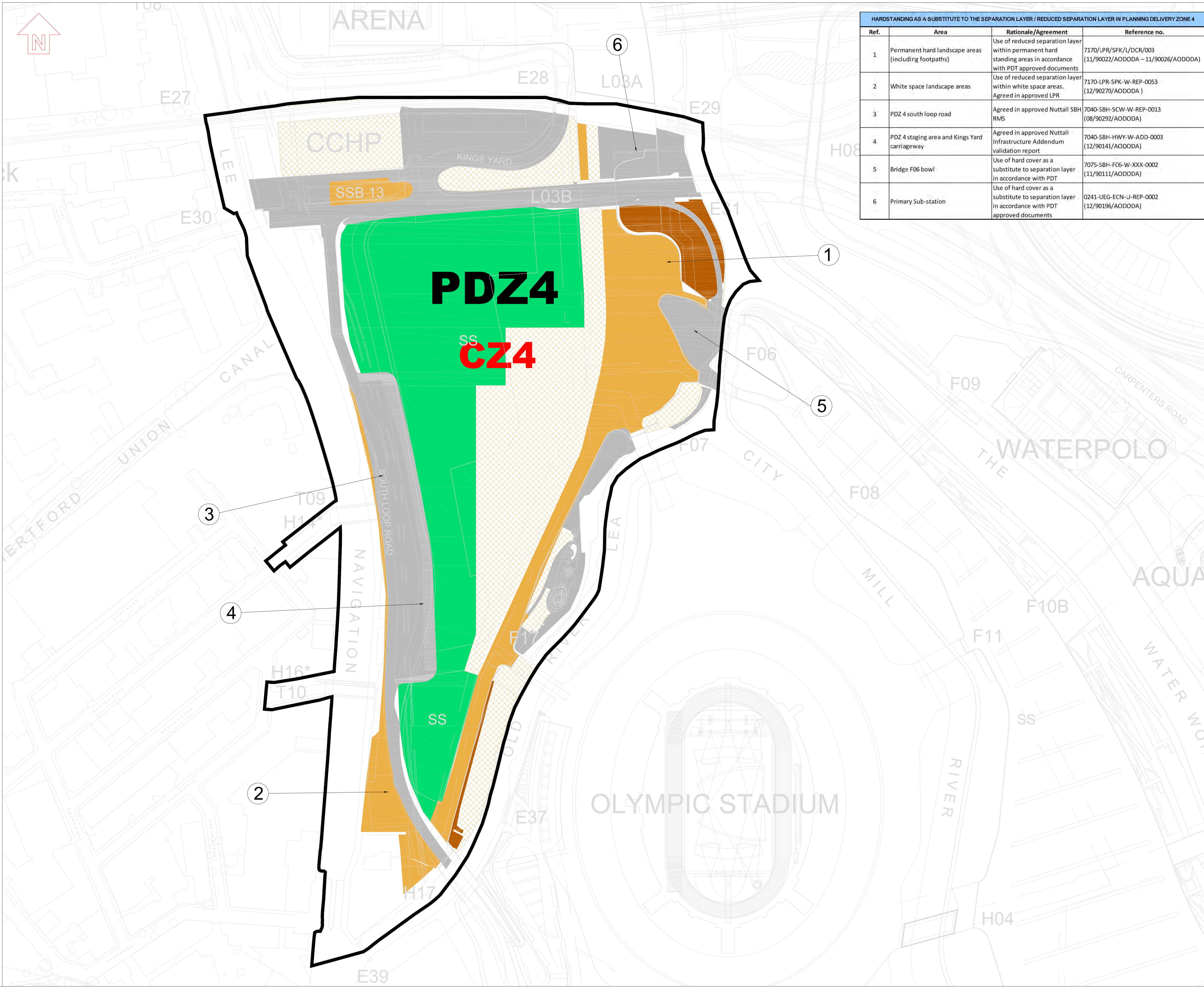
Project Title
Olympic Park Remediation

Drawn	Checked	Approved	
SF	KO	RS	

Date	Scale	Size	
10/08/2012	1:1250	A1	

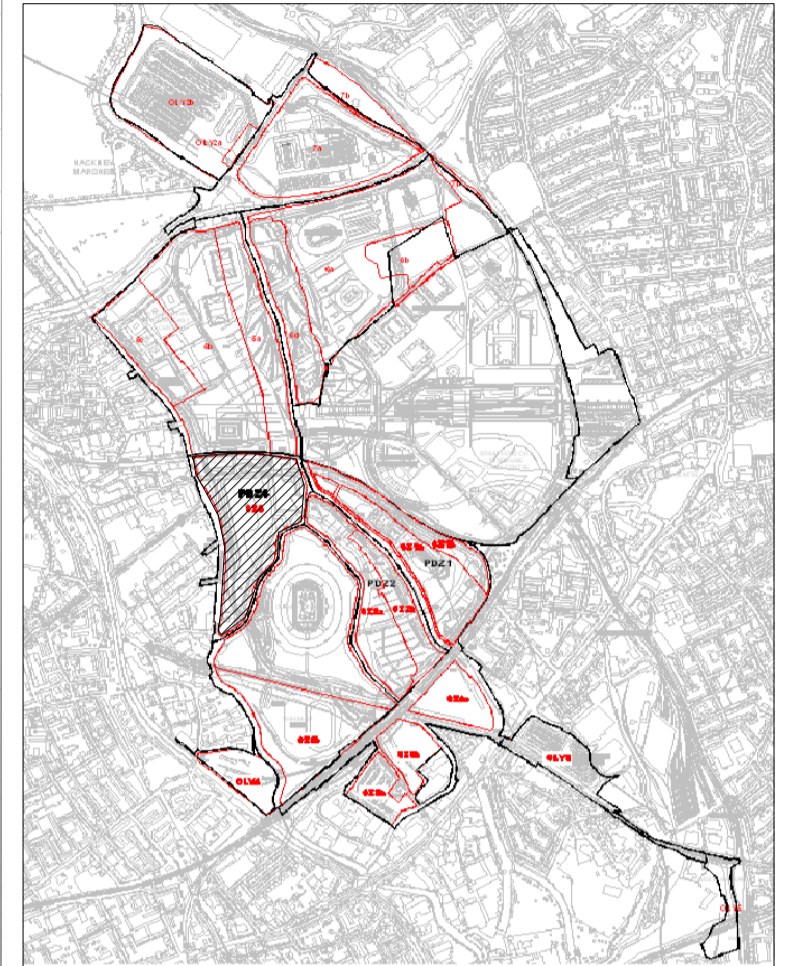
Purpose of Drawing
FINAL

Drawing No.	Sheet	Rev.
0241-ENW-PWD-C-DGA-0406	01	A



HARDSTANDING AS A SUBSTITUTE TO THE SEPARATION LAYER / REDUCED SEPARATION LAYER IN PLANNING DELIVERY ZONE 4			
Ref.	Area	Rationale/Agreement	Reference no.
1	Permanent hard landscape areas (including footpaths)	Use of reduced separation layer within permanent hard standing areas in accordance with PDT approved documents	7170/LPR/SPK/L/DCR/003 (11/90022/AODODA - 11/90026/AODODA)
2	White space landscape areas	Use of reduced separation layer within white space areas. Agreed in approved LPR	7170-LPR-SPK-W-REP-0053 (12/90270/AODODA)
3	PDZ 4 south loop road	Agreed in approved Nuttall SBH RMS	7040-SBH-SCW-W-REP-0013 (08/90292/AODODA)
4	PDZ 4 staging area and Kings Yard carriageway	Agreed in approved Nuttall Infrastructure Addendum validation report	7040-SBH-HWY-W-ADD-0003 (12/90141/AODODA)
5	Bridge F06 bowl	Use of hard cover as a substitute to separation layer in accordance with PDT	7075-SBH-F06-W-XXX-0002 (11/90111/AODODA)
6	Primary Sub-station	Use of hard cover as a substitute to separation layer in accordance with PDT approved documents	0241-UEG-ECN-U-REP-0002 (12/90196/AODODA)

- Legend
- Planning Delivery Zone (PDZ4) Boundaries
 - 0 - 299mm thickness of HHSL
 - 300 - 599mm thickness of HHSL
 - 600+mm thickness of HHSL
 - Hardstanding as a substitute to separation layer
 - LOCOG to complete to final finished level



Notes
Areas without shading have not been subjected to ODA validation.

No.	Description	Apvr	N	DD/NN/YY
Rev	Description	Drawn	Chk'd	Date

Safety, Health and Environment Information

In addition to the hazards / risks normally associated with the types of work detailed on this drawing, note the following risks and information:

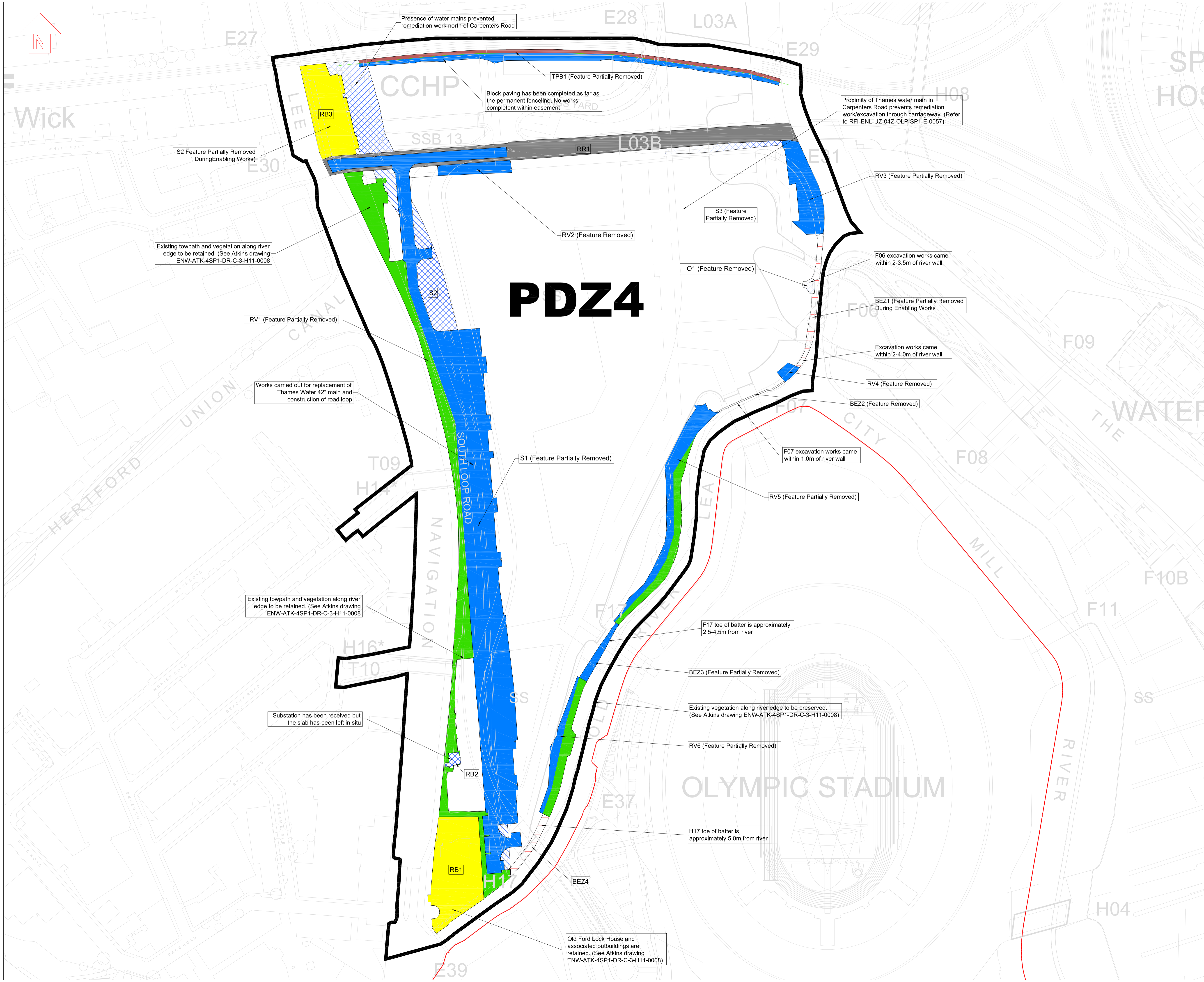
Construction	Cl. Ci. Cii.
Dismantling / Demolition (Future)	Di. Dii. Diii.

For information relating to Use, Cleaning and Maintenance see the Health and Safety File. It is assumed that all works will be carried out by a competent contractor working, where appropriate, to an approved method statement.

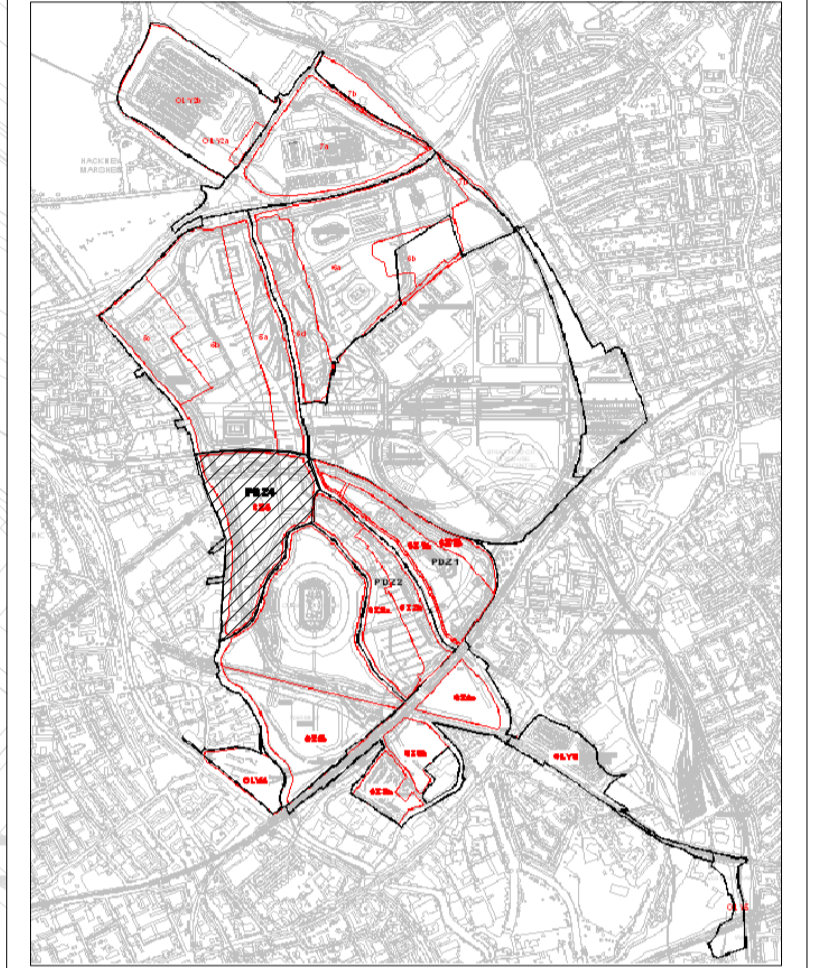
Creator
Prepared by
ATKINS
On behalf of the ODA

Drawing Title
Figure 7 Extent & Thickness of Human Health Separation Layer Within PDZ4

Project Title Olympic Park Remediation				
Drawn	Checked	Approved		
SF	KO	RS		
Date	Scale	Size		
11/01/2013	1:1250	A1		
Purpose of Drawing FINAL				
Drawing No.	Sheet	Rev.		
0241-ENW-PWD-C-DGA-0407	01	A		



- Legend**
- Planning Delivery Zone (PDZ1) Boundaries
 - Construction Zone Boundaries (CZ)
 - Services (S)
 - Retained Building (RB)
 - Third Party Boundary
 - Other (O)
 - Feature Removed/Partially Removed During FOP Works
 - Retained Vegetation (RV)



Note:
Details of the individual retained areas are provided in Appendix E of this report.

No.	Description	Apvr	N	DD/NN/YY
Rev	Description	Drawn	Chk'd	Date

Safety, Health and Environment Information

In addition to the hazards / risks normally associated with the types of work detailed on this drawing, note the following risks and information:

Construction	Cl, Cll, Clll
Dismantling / Demolition (Future)	Di, Dll, Dlll

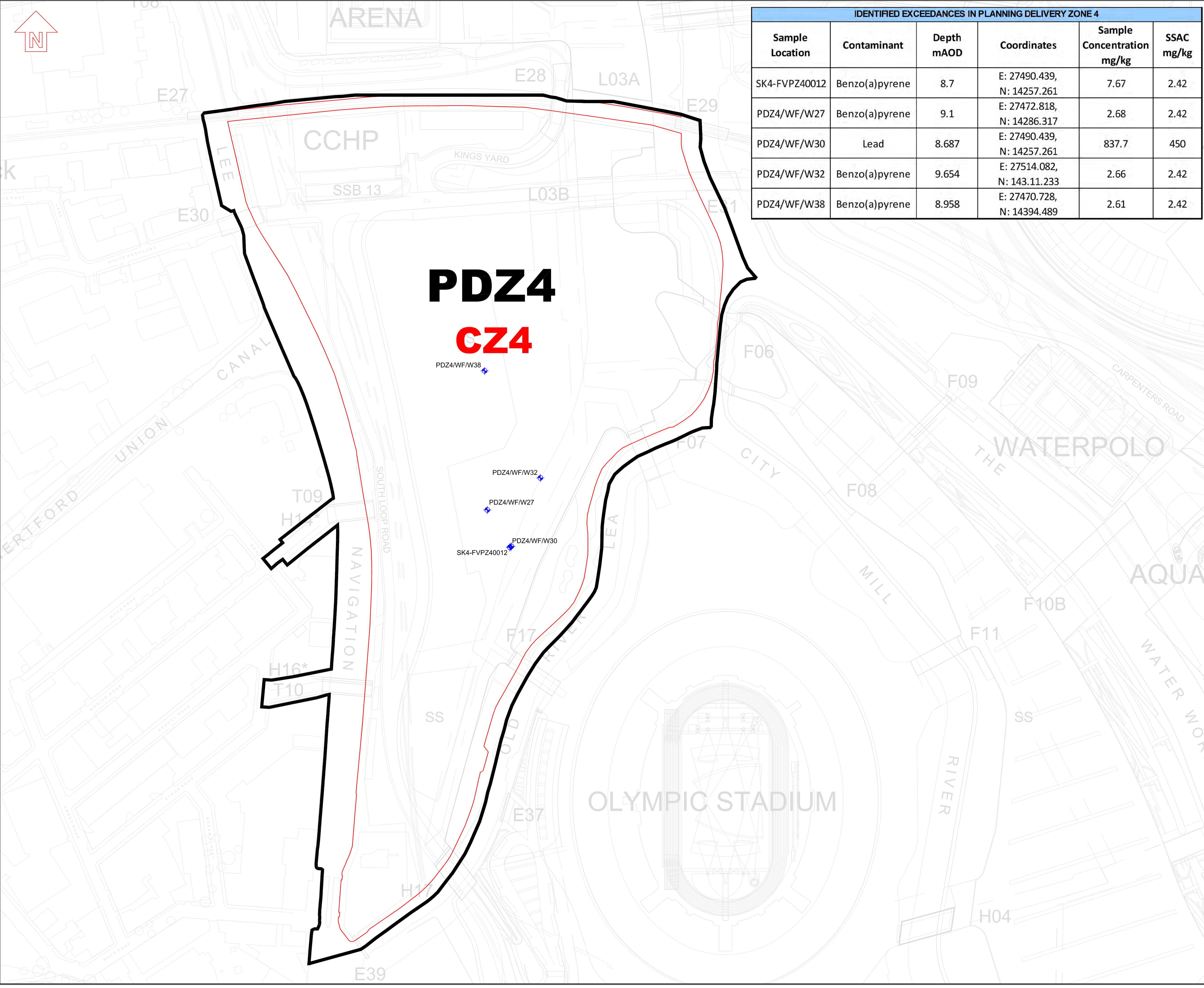
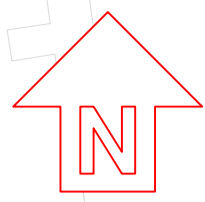
For information relating to Use, Cleaning and Maintenance see the Health and Safety File. It is assumed that all works will be carried out by a competent contractor working, where appropriate, to an approved method statement.

Creator
**Prepared by
ATKINS
On behalf of the ODA**

Drawing Title

FIGURE 9 - RETAINED AREAS WITHIN PLANNING DELIVERY ZONE 4

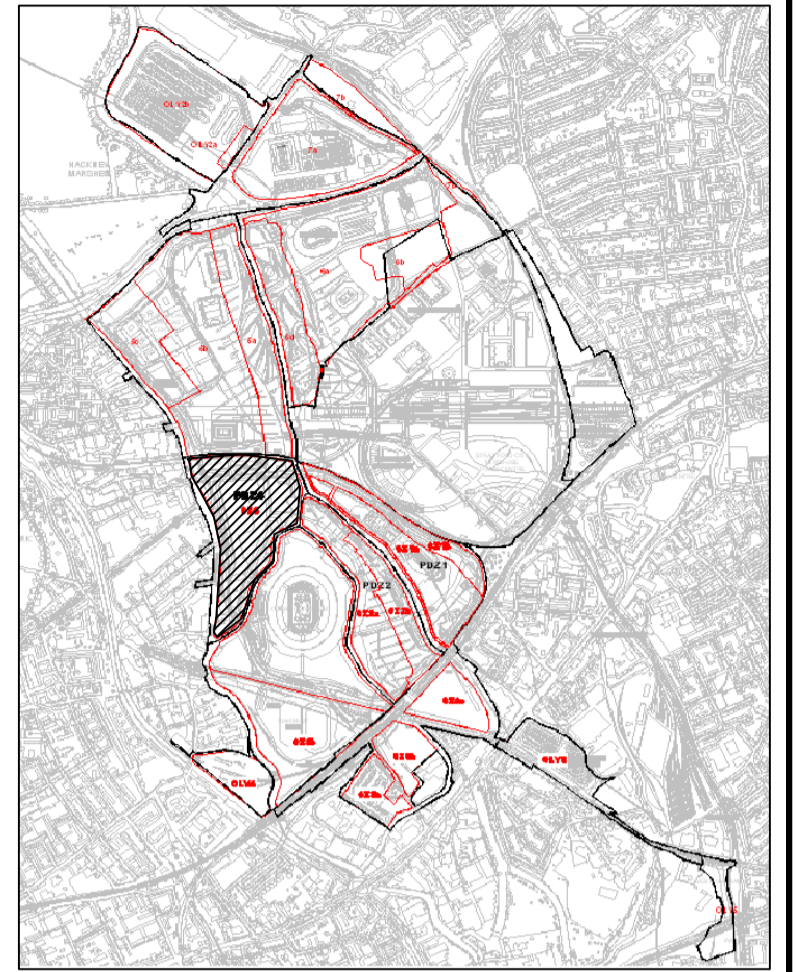
Project Title Olympic Park Remediation				
Drawn	Checked	Approved		
PY	KO	RS		
Date	Scale	Size		
17/12/2012	1:1250	A1		
Purpose of Drawing FINAL				
Drawing No.	Sheet	Rev.		
0241-ENW-PWD-C-DGA-0409	01	A		



IDENTIFIED EXCEEDANCES IN PLANNING DELIVERY ZONE 4					
Sample Location	Contaminant	Depth mAOD	Coordinates	Sample Concentration mg/kg	SSAC mg/kg
SK4-FVPZ40012	Benzo(a)pyrene	8.7	E: 27490.439, N: 14257.261	7.67	2.42
PDZ4/WF/W27	Benzo(a)pyrene	9.1	E: 27472.818, N: 14286.317	2.68	2.42
PDZ4/WF/W30	Lead	8.687	E: 27490.439, N: 14257.261	837.7	450
PDZ4/WF/W32	Benzo(a)pyrene	9.654	E: 27514.082, N: 143.11.233	2.66	2.42
PDZ4/WF/W38	Benzo(a)pyrene	8.958	E: 27470.728, N: 14394.489	2.61	2.42

Legend

- Planning Delivery Zone (PDZ4) Boundaries
- Construction Zone Boundaries (CZ)
- Validation Sample Exceedance



No.	Description	Apr	N	DD/NNYY
Rev	Description	Drawn	Chkd	Date

Safety, Health and Environment Information
 In addition to the hazards / risks normally associated with the types of work detailed on this drawing, note the following risks and information:

Construction	Cl. Ct. CtL
Dismantling / Demolition (Future)	DL Dt. DtL

For information relating to Use, Cleaning and Maintenance see the Health and Safety File. It is assumed that all works will be carried out by a competent contractor working, where appropriate, to an approved method statement.

Creator
 Prepared by
ATKINS
 On behalf of the ODA

Drawing Title
 Figure 10: FoP Exceedances requiring Action in Legacy Transformation

Project Title Olympic Park Remediation			
Drawn SF	Checked KO	Approved RS	
Date 11/01/2012	Scale 1:1250	Size A1	
Purpose of Drawing FINAL			
Drawing No. 0241-ENW-PWD-C-DGA-0410	Sheet 01	Rev. A	