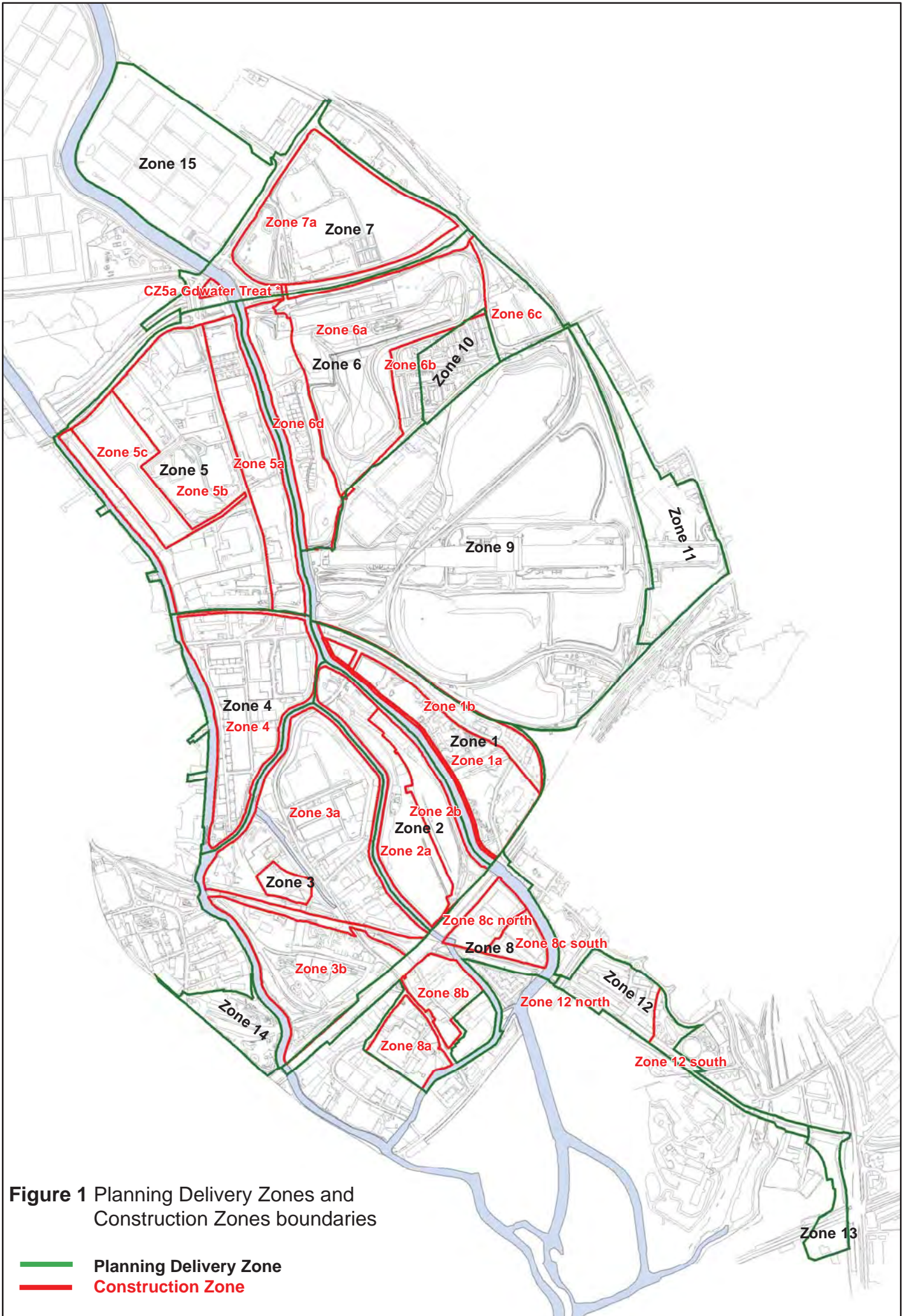
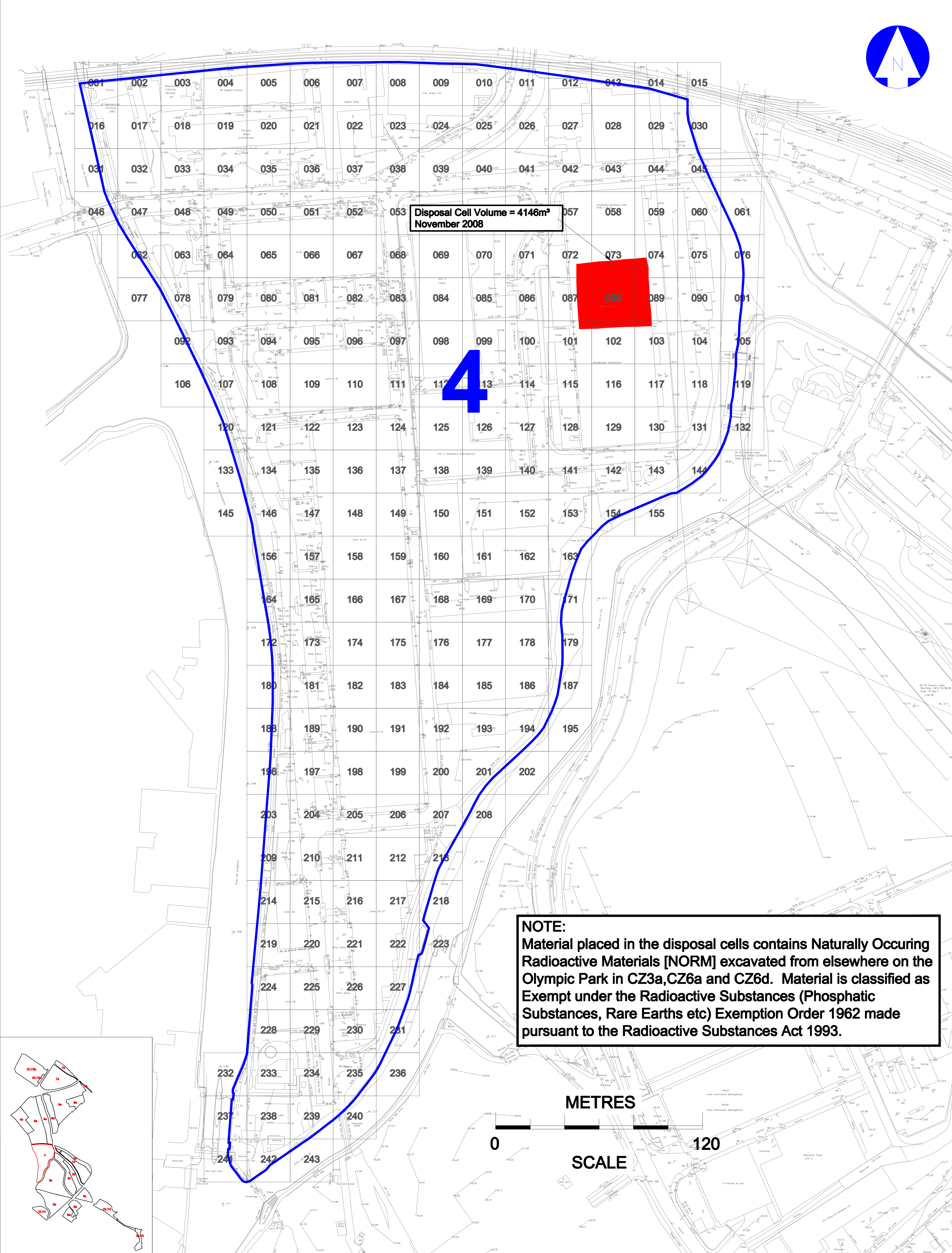
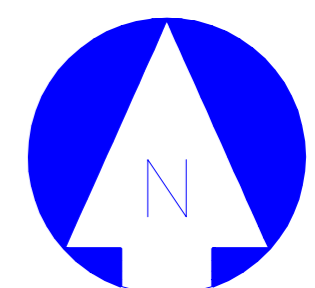


# Drawings





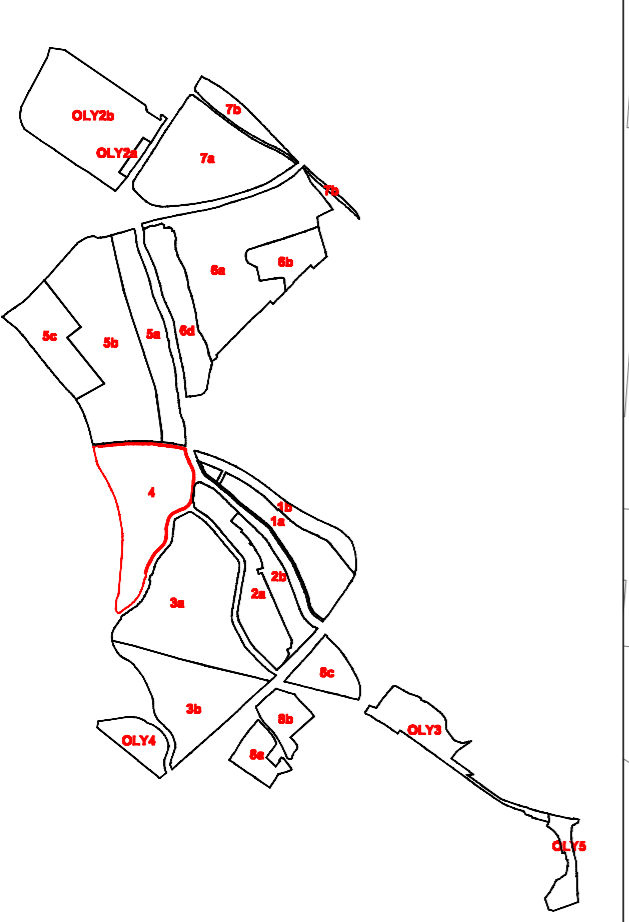


Disposal Cell Volume = 4146m³  
November 2008

**NOTE:**  
Material placed in the disposal cells contains Naturally Occuring Radioactive Materials [NORM] excavated from elsewhere on the Olympic Park in CZ3a, CZ6a and CZ6d. Material is classified as Exempt under the Radioactive Substances (Phosphatic Substances, Rare Earths etc) Exemption Order 1962 made pursuant to the Radioactive Substances Act 1993.

METRES

0 120  
SCALE



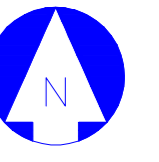
© Olympic Delivery Authority ('ODA'), 2008. All rights reserved. Except as permitted by the Copyright, Designs and Patents Act 1988, no part of this document may be reproduced, stored, transmitted or distributed in any form or by any means, whether electronic, mechanical, by photocopy, recording or otherwise, without the prior written permission of a director. Except where otherwise expressly agreed in writing, the ODA shall have no responsibility or liability for any loss (direct, consequential or otherwise) which may arise from reliance on or use of this document or the information contained in it.  
DO NOT SCALE THIS DRAWING.  
LEGEND:  
Construction Zone Boundary  
Extent of Disposal Cell

Client  
**OLYMPIC DELIVERY AUTHORITY**  
23rd Floor, 1 Churchill Place, Canary Wharf, E14 5LN  
Organisation  
**bam nuttall**  
Project Title  
**OLYMPIC PARK REMEDIATION**

Drawing Title  
**CZ4 - Location of Exempt Radioactive Waste Disposal Cell**  
Drawn D.Crowley Checked A.Van Der Beeke Approved A.Van Der Beeke  
Scale (A1) 1:1000 Date 31/07/09 Status Information  
Work Instruction No: W/ZZZ/033  
Drawing No. 2DD-ENL-CK-04Z-OLP-SP1-E-0513 Rev. 00

00 First Issue DC A.V.B 31-07-09  
Rev Description Drawn Cx/Cd Date

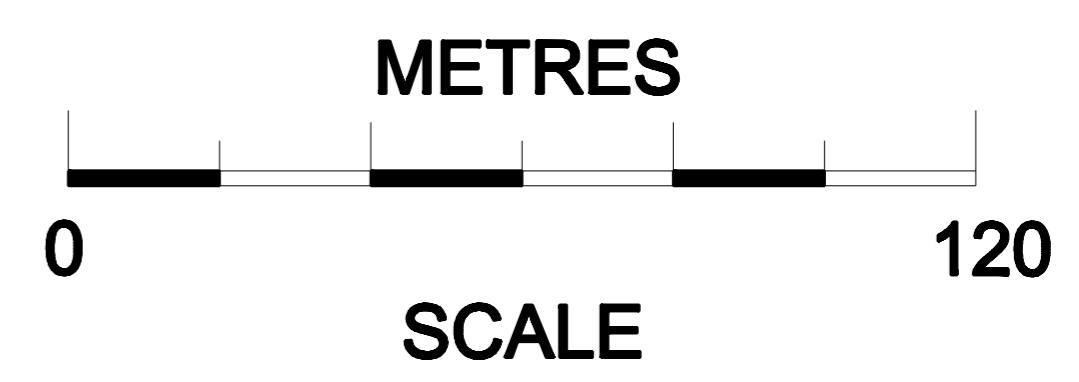
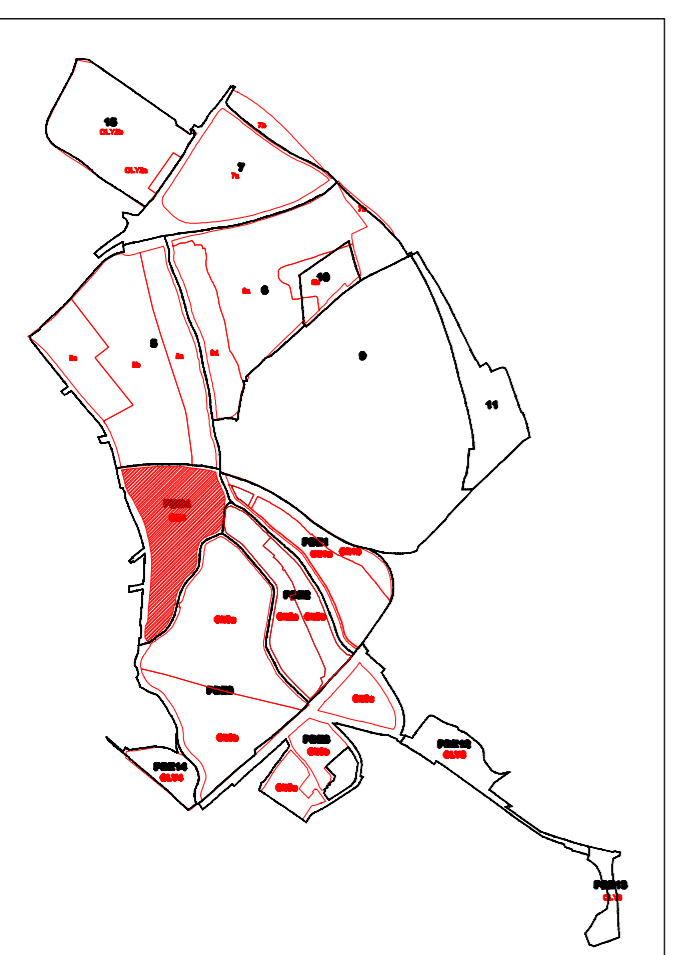
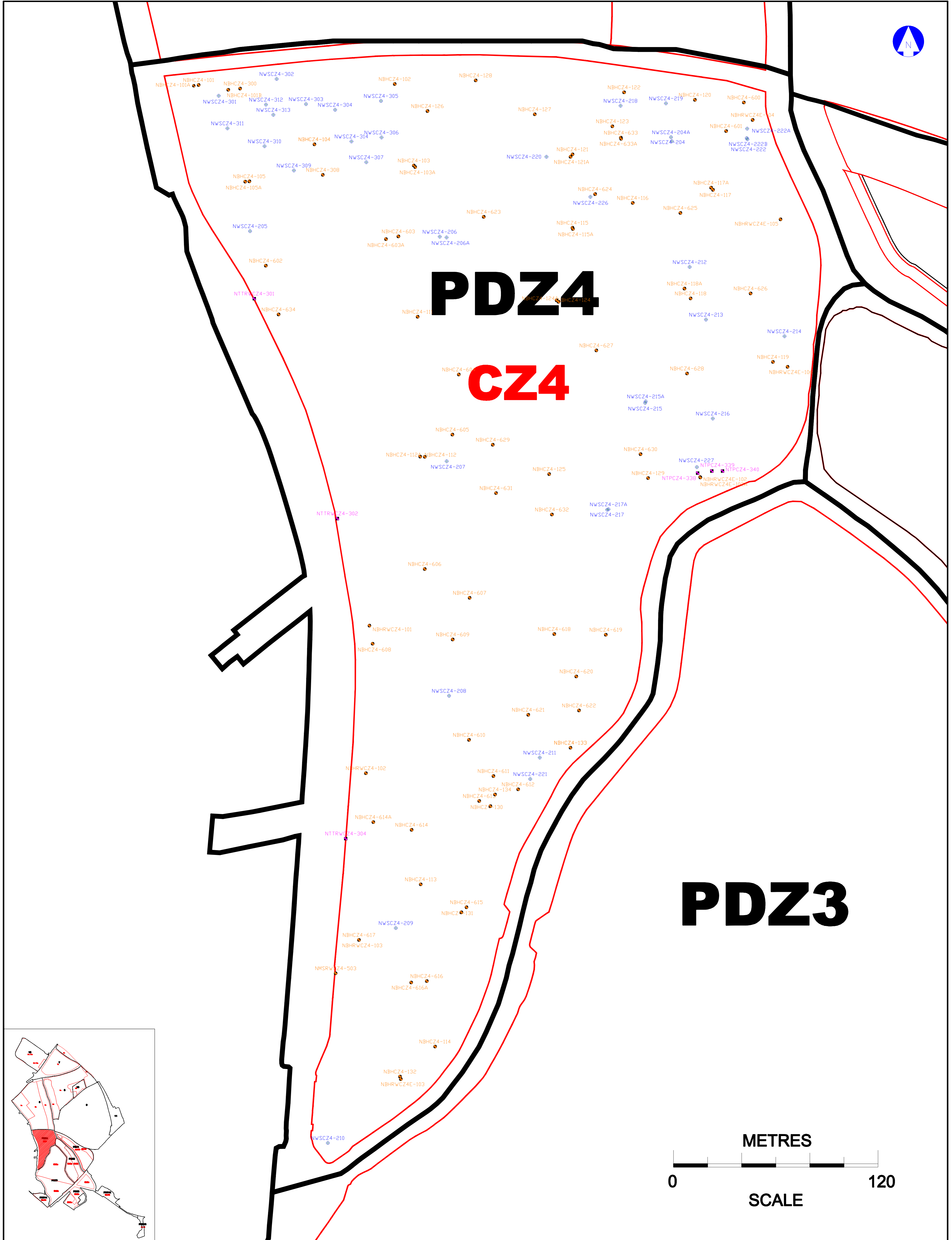
This map is reproduced from Ordnance Survey Material with the permission of Ordnance Survey on behalf of the Controller of Her Majesty's Stationary Office. © Crown Copyright. Unauthorised reproduction infringes Crown Copyright and may lead to prosecution or civil proceedings. All rights reserved. Olympic Delivery Authority. 100046062 (2008)



# PDZ4

## CZ4

# PDZ3



© Olympic Delivery Authority ("ODA"), 2006. All rights reserved. Except as permitted by the Copyright, Designs and Patents Act 1988, no part of this document may be reproduced, stored, transmitted or distributed in any form or by any means, whether electronic, mechanical, by photocopying, recording or otherwise, without the prior written permission of a director. Except where otherwise expressly agreed in writing, the ODA shall have no responsibility or liability for any loss (direct, consequential or otherwise) which may arise from reliance on or use of this document or the information contained in it.

DO NOT SCALE THIS DRAWING.

NOTES

- PLANNING DELIVERY ZONE BOUNDARIES
- CONSTRUCTION ZONE BOUNDARIES
- NBHCZ1a-110 BOREHOLE LOCATION AND ID
- ⊕ NWSCZ1a-110 WINDOW SAMPLE LOCATION AND ID
- NTPCZ1a-110 TRIAL PIT LOCATION AND ID

This map is reproduced from Ordnance Survey Material with the permission of Ordnance Survey on behalf of the Controller of Her Majesty's Stationery Office. © Crown Copyright. Unauthorised reproduction infringes Crown Copyright and may lead to prosecution or civil proceedings. All rights reserved. Olympic Delivery Authority. 100046062 (2008)

<b>OLYMPIC GRID</b>	Client <b>OLYMPIC DELIVERY AUTHORITY</b> 23rd Floor, 1 Churchill Place, Canary Wharf, E14 5LN	Drawing Title <b>Figure 4: Site Investigation Locations of Planning Delivery Zone 4 (PDZ4)</b>	
	Organisation <b>bam nuttall</b> www.bamnuttall.co.uk	Drawn Ross Simpson	Checked Paul Greenhalf
	Project Title <b>OLYMPIC PARK ENABLING WORKS</b>	Date 24-01-11	Approved Paul Greenhalf
	Scale (A1) 1:1000	Status Information	Work Instruction No. W1ZZZ068
	Drawing No. 2DD-ENL-CK-ZZZ-OLP-SP1-E-0355	Rev. 01	

CAD FILE REF: C:\Rail\CAD Files Resources\CAD\Parl\fig 402D-ENL-CK-ZZZ-OLP-SP1-E-0355.dwg

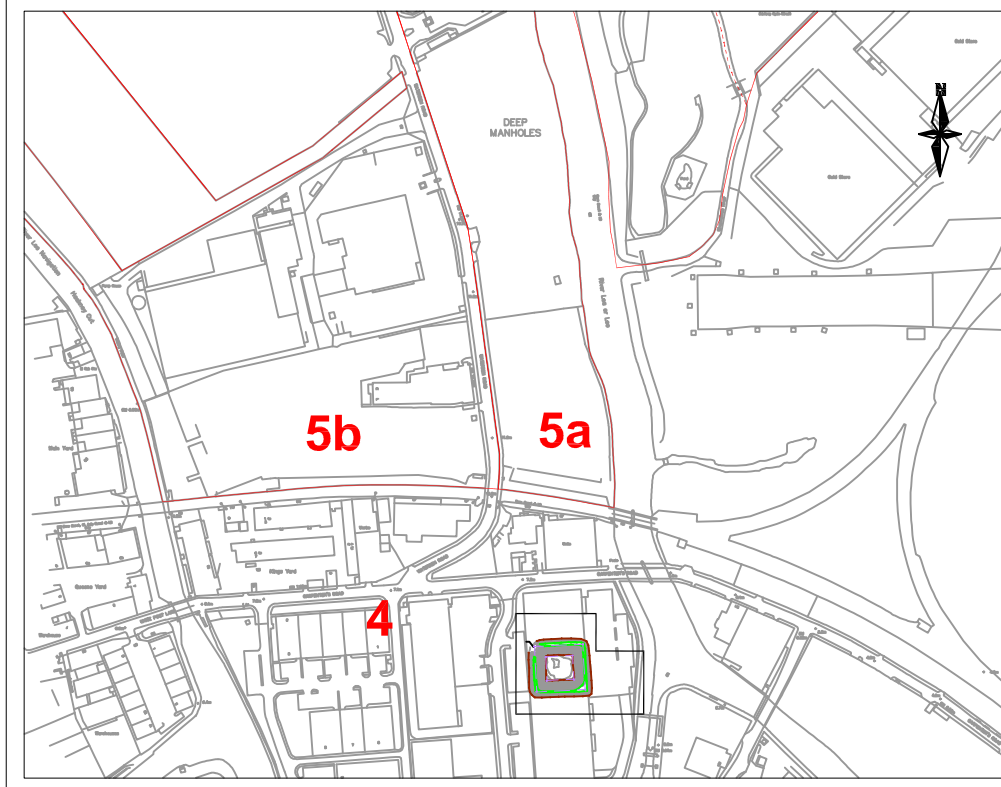
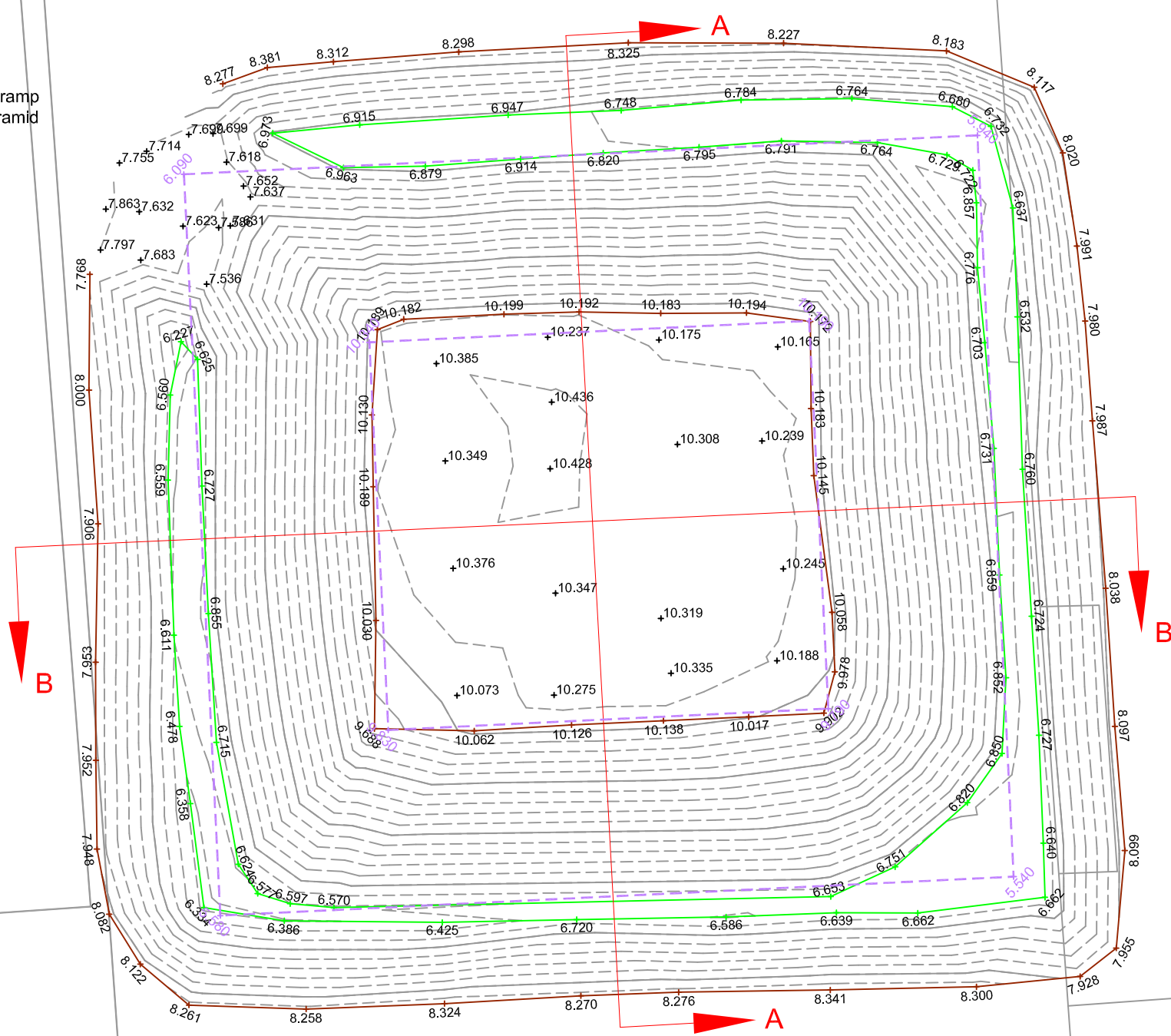
01	Amended based on Atkins comments	RB	PG	05-12-11
00	First Issue	RS	PG	24-01-11
Rev	Description	Drawn	CHK'd	Date



Access ramp onto pyramid

Balfour Beatty's operations on this side

Nuttall's operations on this side



© Olympic Delivery Authority ("ODA"), 2006. All rights reserved. Except as permitted by the Copyright, Designs and Patents Act 1998, no part of this document may be reproduced, stored, transmitted or distributed in any form or by any means, whether electronic, mechanical, by photocopy, recording or otherwise, without the prior written permission of a director.

Except where otherwise expressly agreed in writing, the ODA shall have no responsibility or liability for any loss (direct, consequential or otherwise) which may arise from reliance on or use of this document or the information contained in it.

DO NOT SCALE THIS DRAWING.

### NOTES

#### KEY

- Bottom of batter
- Top of batter
- - - Radiological assessment profile

For cross sections please refer to Dwg No's:  
**2DD-MOR-CK-04Z-OLP-SP1-E-0009**  
**2DD-MOR-CK-04Z-OLP-SP1-E-0010**

Rev	Description	Drn	Chk	Date
02	Radiological assessment profile added	AB	AE	21/09/10
01	Drawing revised	AB	AE	09/09/10
00	First issue	LD	AB	20/08/09

Client  
**OLYMPIC DELIVERY AUTHORITY**  
 23rd Floor, 1 Churchill Place, Canary Wharf, E14 5LN

Organisation

Project Title  
**OLYMPIC PARK REMEDIATION**

Drawing Title  
**ENABLING WORKS AS BUILT FOR L03B EXEMPT FILL DEPOSITION AREA EXEMPT FILL LEVEL SURVEY**

Drawn	L.Disbury	Scale(A3)	Not to scale
Checked	C.Pantelidakis	Date	20th Aug 2009
Approved	A.Evans	Status	AS BUILT
Drg. No.	2DD-MOR-CK-04Z-OLP-SP1-E-0007	Rev.	02

**APPENDIX A**