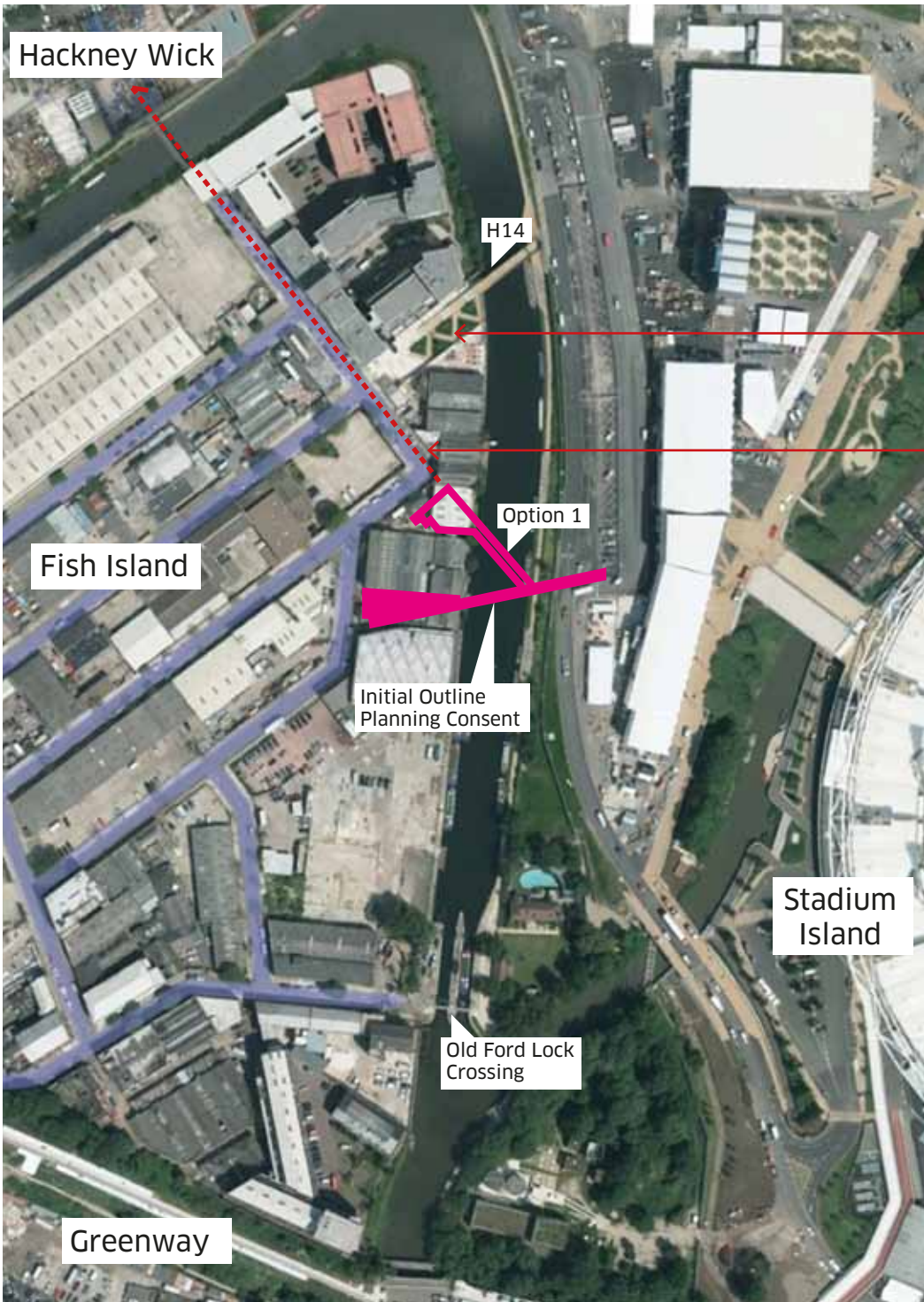


H16 Feasibility Study - Option 1
Fish Island - April 2014 v.1



H16 Implementation

H16 represents a new connection between Fish Island and the Queen Elizabeth Olympic Park. It is a pedestrian bridge that will tie the existing community to the West with the new development of Sweetwater and environs.

This Option 1 Scheme paper explores the feasibility of realignment of the proposed bridge to address issues of space requirements and improved public realm provision.

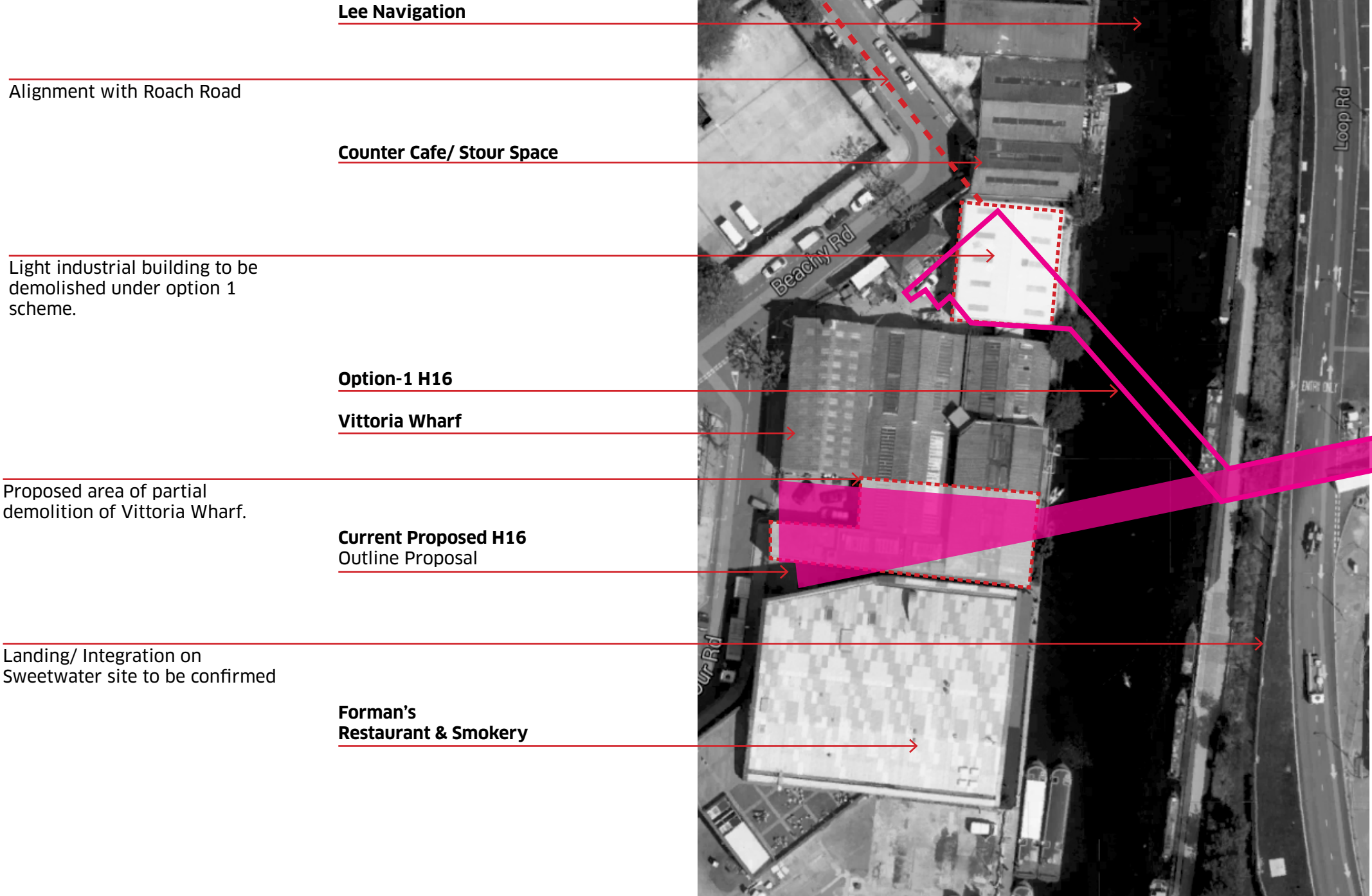
Pedestrian Cycle bridge
(to be upgraded to all modes bridge)

Desire Line
(Route North to Hackney Wick Station)

Location Plan



--- LLDC Boundary
 — Study Area



Lee Navigation

Alignment with Roach Road

Counter Cafe/ Stour Space

Light industrial building to be demolished under option 1 scheme.

Option-1 H16

Vittoria Wharf

Proposed area of partial demolition of Vittoria Wharf.

Current Proposed H16 Outline Proposal

Landing/ Integration on Sweetwater site to be confirmed

Forman's Restaurant & Smokery

Current H16 Design

The existing permitted outline design for a new bridge connection would be located on the Vittoria Wharf site, requiring the partial demolition of an existing suite of workspace studios.

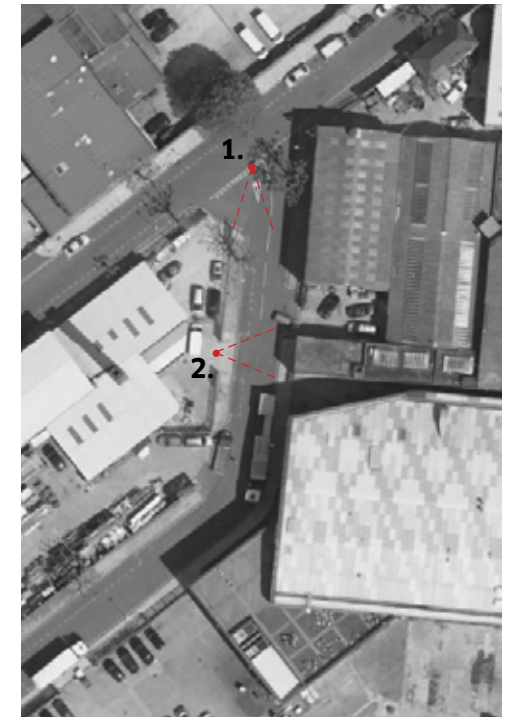
- Due to the space constraints and the desire to limit demolition, the stair design incorporated a convoluted ramp arrangement to provide DDA compliant access. The design represents a large inefficient footprint due to the incorporation of ramps across two stairs.
- The design fails to provide any meaningful public realm that could take advantage of new pedestrian flows to help create a sense of vitality and vibrancy in the immediate area and does not stitch into the street network of Hackney Wick and Fish Island
- The bridge removes possible access to Vittoria Wharf from the south and Formans Restaurant and Smokery from the North.

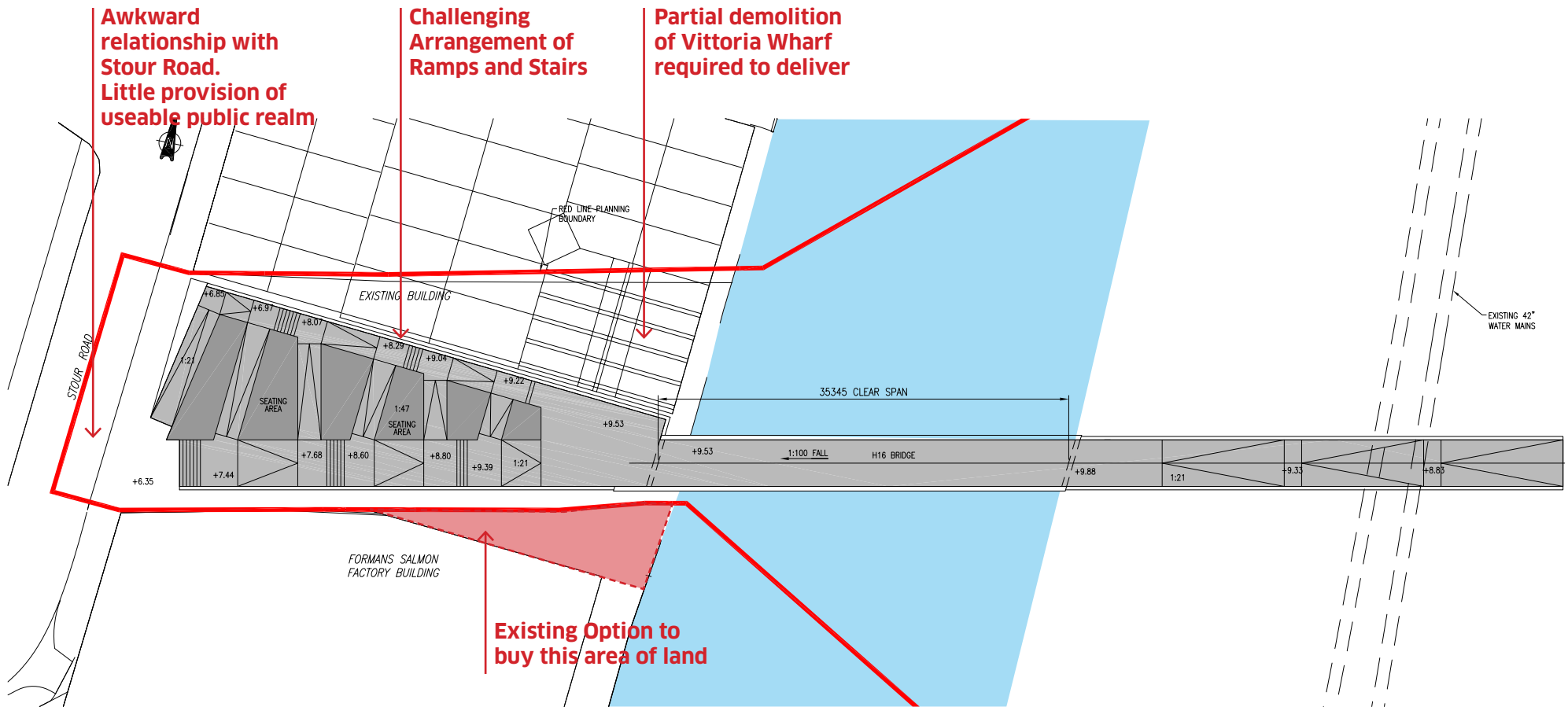


1. Entrance to existing outline H16, view from Stour Road

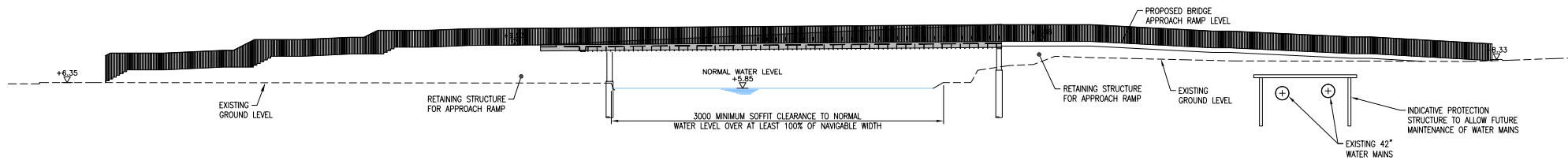


2. Part of Vittoria Wharf to be demolished under proposed option





PLAN
SCALE 1:200



ELEVATION
BASED UPON PROFILE AT CENTRE LINE OF FOOTWAY
SCALE 1:200

Option 1 H16 Design

An alternative layout relocates the proposed bridge North to land inbetween Vittoria Wharf and Stour Space. This would require the demolition of an existing light industrial building but retains Vittoria Wharf in its entirety.

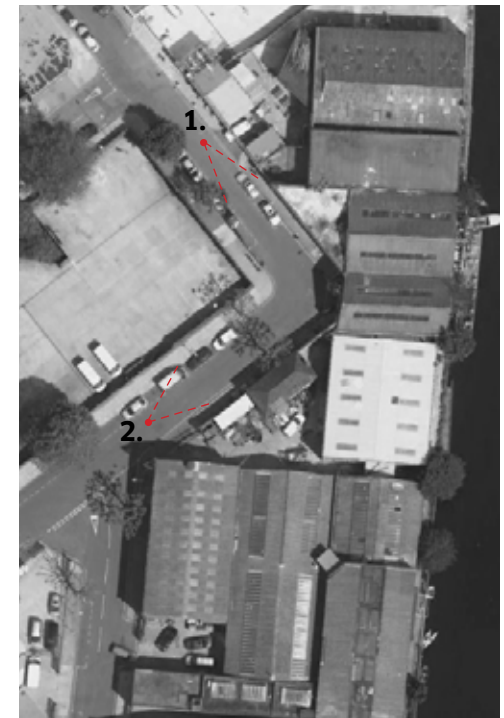
- This space can allow for a new flight of public stairs and a 1:21 ramp arranged in a more efficient and seperated manner than currently proposed. Allows provision of a cycle ramp next to the stairs.
- The existing 'gatehouse' structure can be retained and potentially converted into a public amenity.
- The new arrangement also presents the possibility of a mezzanine terrace connecting H16 to the existing Stour Space. This could provide increased terrace space, improvements and expansion to the building with facilities below the terrace, assisting in bringing the building into the public realm, encouraging its continued success as a place for cultural and leisure activities.
- The new location improves the bridge's visibility from Roach Road which provides a major pedestrian route from Hackney Wick.
- Partial demolition of Vittoria Wharf would be expensive due to the need to retain the existing studios in the portion of the building which is not owned by the LLDC.

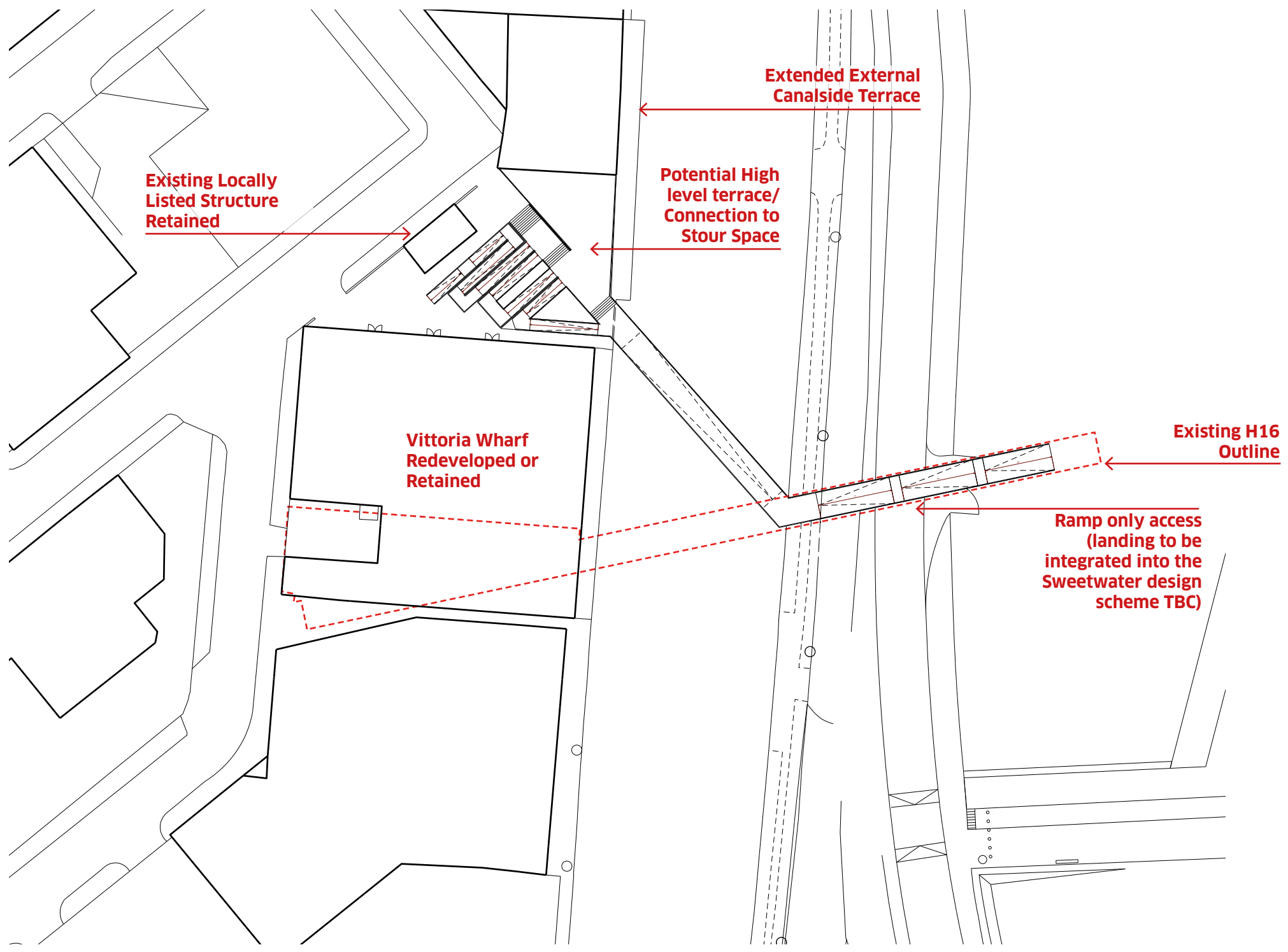


1. New gate/bridge entrance, view from Roach Road



2. View from Beachy Road





Existing Locally Listed Structure Retained

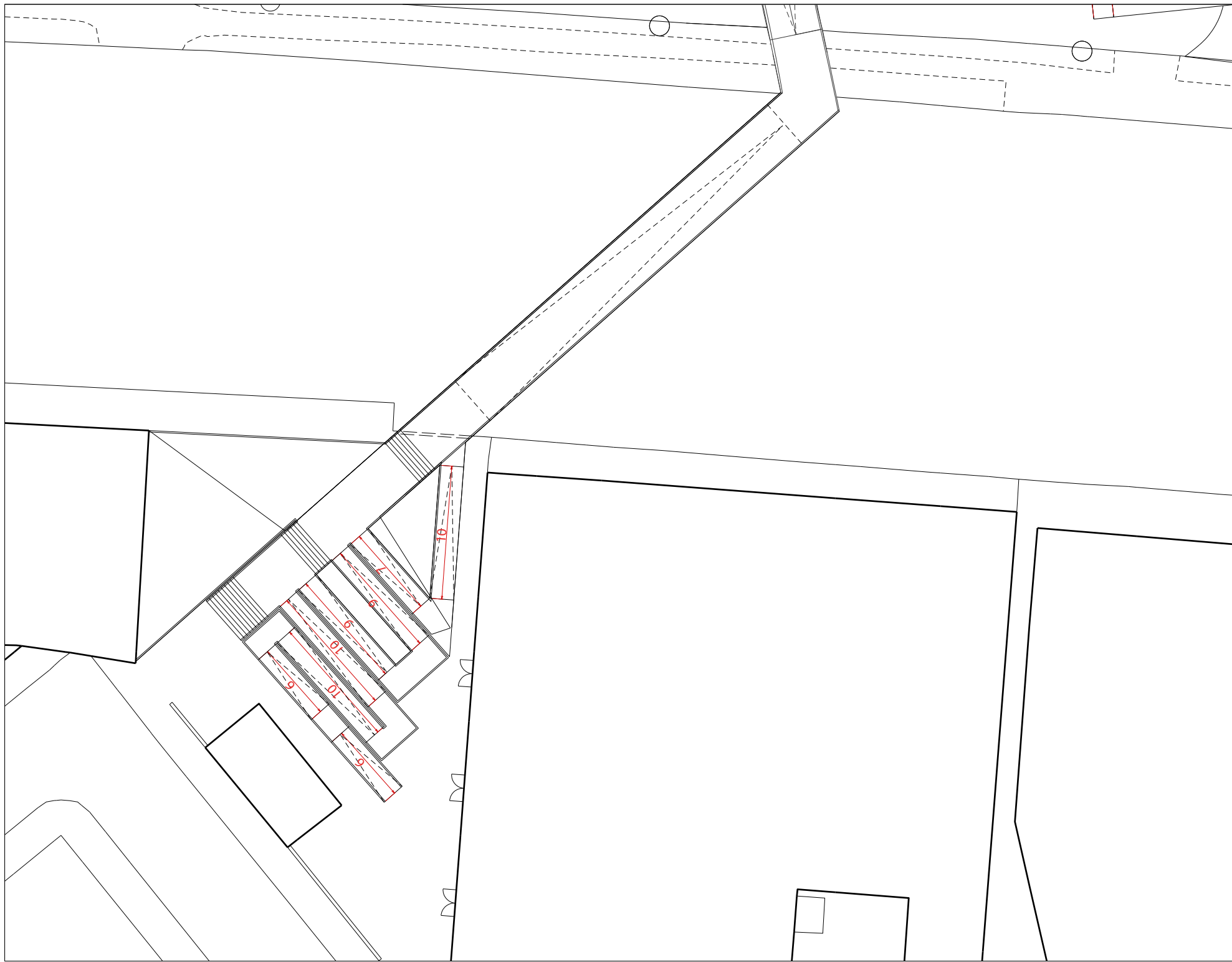
Extended External Canalside Terrace

Potential High level terrace/ Connection to Stour Space

Vittoria Wharf Redeveloped or Retained

Existing H16 Outline

Ramp only access (landing to be integrated into the Sweetwater design scheme TBC)

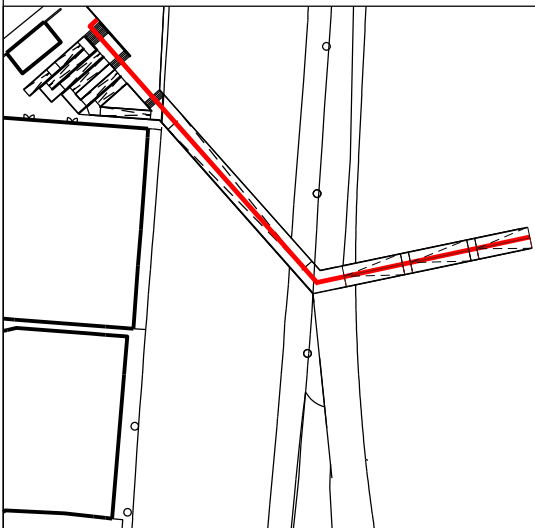
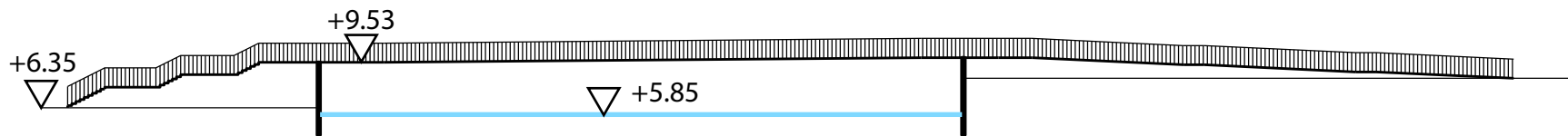


London Legacy Development Corporation
 Level 10, 1 Stratford Place
 Montfichet Road, London
 E20 1EJ
 +44 (0) 20 3288 1800
 info@londonlegacy.co.uk

Drawing References:
 Status: For Information
 Issue: 1
 Date: 07/04/2014
 Scale: 1:250 @ A3
 Drawn by: AS
 Checked by: HL

Project
 H16 Option 1 Bridge Proposal
Location
 Fish Island/QEOP
Drawing Title
 H16-DWG-INF-GA-001

Do not scale from this drawing.



London Legacy Development Corporation

**Level 10, 1 Stratford Place
Montfichet Road, London
E20 1EJ**

**+44 (0) 20 3288 1800
info@londonlegacy.co.uk**

Project
H16 Bridge Option 1

Location
Fish Island/QEOP

Drawing Title
H16-DWG-INF-GA-002

Drawing Reference:

Status: For Information

Issue: 1

Date: 07/04/2014

Scale: 1:500 @ A4

Drawn by: AS Checked by: HL

Do not scale from this drawing.