



Milestone Monier Road bridge

Successful installation over the Navigation Canal [page 2](#)



London Stadium seat moves

New layout brings fans closer to the action [page 3](#)

October 2020

PARK NEWS



AUTUMN ON THE PARK

Throughout this most unusual of years, we've seen just how important parks can be within their communities. This summer we might've missed some of the incredible international events we normally host at the Park, but it was a pleasure to still be able to provide Londoners with a place to come and escape the feeling of a city.

You might've spotted our Find Your Summer posters on phone boxes around east London, and here's hoping many of you were able to do just that on days out to the Park! With venues reopening, diners making the most of outside space and thrill-seekers riding The Slide again, there was certainly plenty to enjoy.

Schools, shops, restaurants and offices are continuing to reopen, and while some degree of uncertainty lies ahead you can be sure at least that the Park will continue to play an important role for the communities around it. This summer brought its fair share of drizzly days, perfect training for enjoying all-weather walks in the Park throughout the autumn and

winter! Seeing the seasons change, enjoying fresh air and getting active are all important for mental health and wellbeing, so we hope you will continue to make the most of it. (Look out, too, for some free activities taking place around the Park just in time for half-term.)

Since our last edition of Park News, published in late July, there's been plenty going on. East Summer School, swapped to an online programme this year, was a success and over 270 young east Londoners were able to take part in unique courses, workshops and webinars. Smart Mobility Living Lab: London (SMLL)'s presence on the Park was marked with an opening ceremony, and Hackney Bridge has now opened to its first founding Members – including Onyx (an inclusive hair and nail salon founded by Celica and Leonie from Hackney), RioKan (a family-run clothing brand established in Hackney Wick) and many more. Look out for the colourful mural at Hackney Bridge too, designed and painted by local Hackney Wick artist Busk.

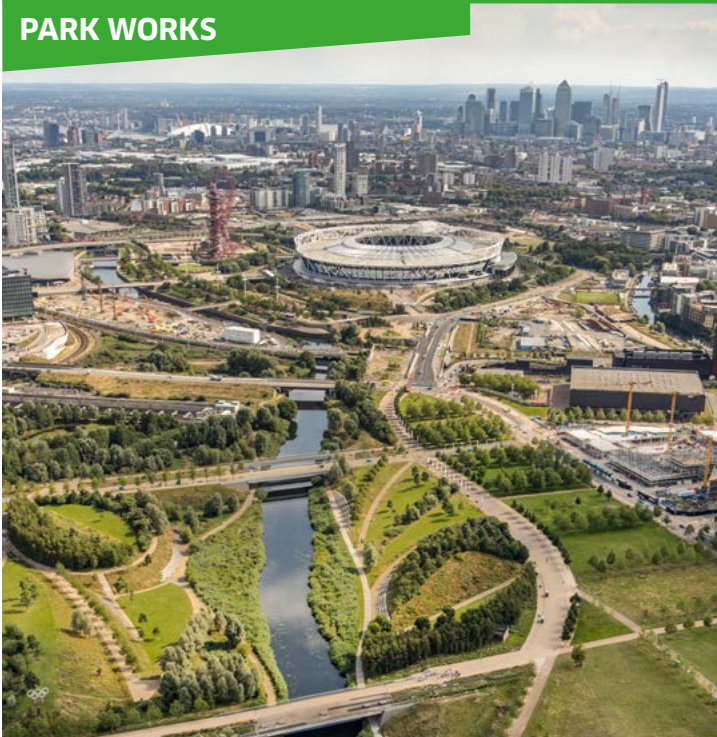
There's a lot of exciting opportunities, development and work still going on

around the Park that you can read about in this issue. You can also find out more about the progress of East Bank, the largest cultural and education district being built in a generation, in the supplement you'll find inside.

HAVE YOUR SAY!

Help us shape safer, healthier and more convenient streets around the Park!

LLDC is working with London Borough of Newham to improve walking, cycling and public transport along Westfield Avenue and surrounding streets. This is an ambitious project, and we'd like to hear from you on how you get around the area, routes to the Park and any changes or improvements you'd like to see. Visit [westfieldavenuemap.commonplace.is](#) to find out more and share your views by mid-November.



UPDATES FROM AROUND THE PARK

For all the latest information about the Park's facilities and safety measures, visit [QueenElizabethOlympicPark.co.uk/Coronavirus](https://www.queenelizabetholympicpark.co.uk/Coronavirus)

- While events on the Park have been cancelled, football matches are taking place behind closed doors at London Stadium. On match days, Stadium island bridges and the West Ham United store will be closed at present.
- All of the Park's venues are now open and operating within Government safety guidelines. This includes: the pool and gym spaces at the London Aquatics Centre; gym spaces and certain gym classes at Copper Box Arena; court hire at Lee Valley Hockey and Tennis Centre; and certain activities at Lee Valley VeloPark.
- The ArcelorMittal Orbit is open from Friday – Monday and will be open throughout the week during October half-term for The Slide and Skyline Views. Don't forget to call **0333 800 8099** to use your local residents' discount!
- The Park's Info Point is open from 11am-4pm each day. Tours are not currently running, although you can contact guidedtours@queenelizabetholympicpark.co.uk

All information correct at the time of going to print.

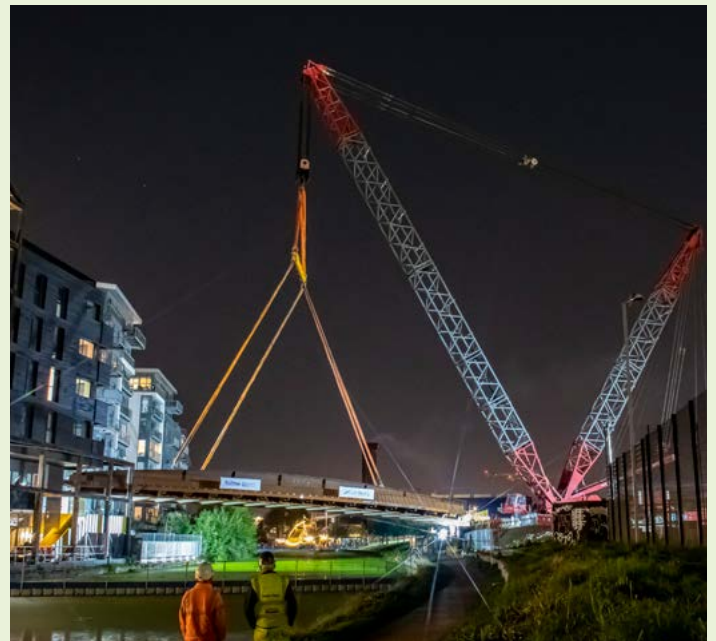
PARK WORKS AND CLOSURES

- The new road linking London Stadium to Waterden Road and the Copper Box Arena will be opening in phases from this autumn. Once the main road is open, Clarnico Lane will close.
- East Bank construction continues with a temporary site exit route along the waterfront by the London Aquatics Centre until 2021.

MILESTONE BRIDGE LIFTED INTO PLACE ACROSS RIVER LEE NAVIGATION



A major milestone in the development of Sweetwater was achieved in September with the installation of the new Monier Road bridge across the River Lee Navigation. Teams worked through the night to install the bridge, with the bridge deck lifted into position



over the canal with the aid of a 1200tn mobile crane and a self-propelled modular transporter from the Sweetwater site. While closed currently, the new bridge will provide pedestrian, cycle and bus access to the Fish Island neighbourhood when it opens in early 2021.

LONDON STADIUM COMPLETES SEAT MOVES

Sporting events might currently be taking place behind closed doors, but that hasn't prevented the team at London Stadium carrying out works to bring fans even closer to the action when the venue reopens for crowds.

The new stand configuration, carried out by the Arena Group, was completed in August in time for the 20/21 Premier League season. It brings supporters in the North Stand (Bobby Moore) and South Stand

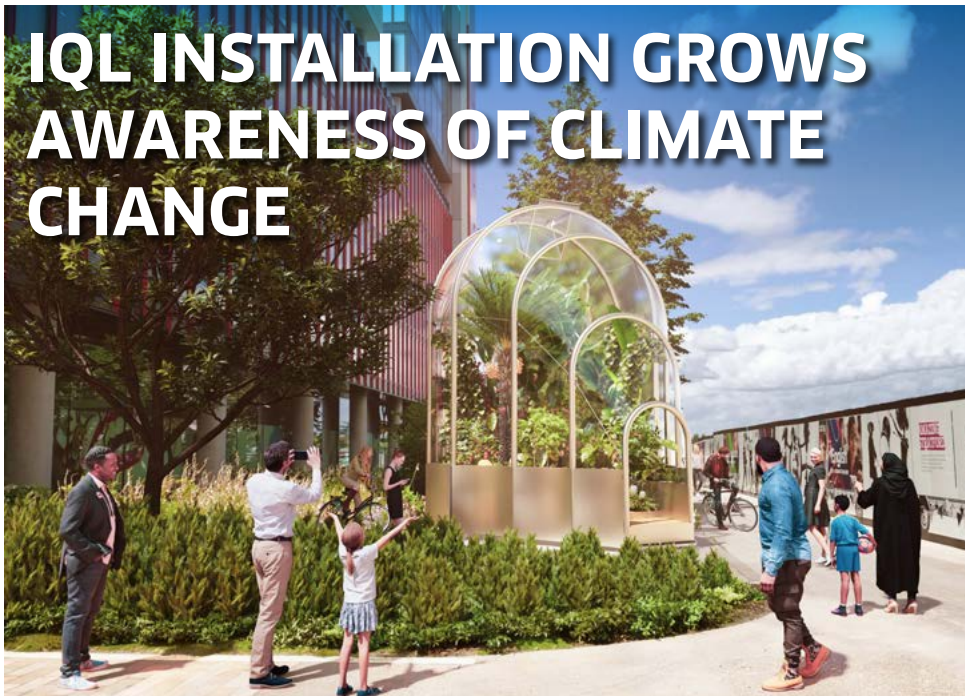


(Sir Trevor Brooking) nearer to the action in a new squared off design, as well as making the venue even more versatile.

The new layout will allow seats to be moved more quickly and efficiently

for the full calendar of events. The reduced timeframe for the £5m seating system will save at least £1m a year on seat move costs, helping to repay the investment and reduce the venue's operational costs.

IQL INSTALLATION GROWS AWARENESS OF CLIMATE CHANGE



Alongside its industrial history, east London has a rich tradition for growing under glass with the Lee Valley once home to a 20-mile stretch of greenhouses.

The Hothouse, a striking installation at International Quarter London in the south of the Park, gives a nod to this tradition while also raising awareness of what the future of growing could look like in the UK. The environment inside the glass structure can be adapted and regulated to suit a number of different plants and crops, including tropical fruits and grains such as

guava, pineapples, avocados and quinoa – all of which environmental scientists predict could be grown outside in the UK by 2050 if temperature increases continue as they are. While this aims to raise awareness of the significance of climate change, it also seeks to inspire and educate – and with such a beautiful selection of crops and plants growing side by side, it's definitely worth a peek. The Hothouse was installed as part of the London Design Week, but will sit in place for a year showing the evolution of plants across the seasons.

NEW REPORT SHOWS PARK'S BIODIVERSITY PLAN

With its open parklands and pretty gardens, the Park and its wildlife provided a lifeline for many east Londoners during lockdown, offering somewhere for exercise, relaxation and the feeling of escaping the city. A new report published last month has shown that the Park has also provided a safe home for a range of rare plants and animals, including the streaked bombardier beetle, black redstart, sand martin and brown-banded carder bee.

This report, known as the Biodiversity Action Plan (BAP) is published roughly every five years and sets out the long-term environmental management of the Park. The creation of the Olympic Park in 2008 provided unique opportunities to put in place new ideas about the role and design of urban parks. The Park's first BAP in 2008, (the first produced for an Olympic Park), outlined proposals to create 10 new habitat types including wildflower meadows, woodlands, and wetlands. It's nice to see that, twelve years later, the latest BAP records the success of these habitats. Find out more about the Park's biodiversity at [QueenElizabethOlympicPark.co.uk/our-story/how-we-work/sustainability](https://www.queenelizabetholympicpark.co.uk/our-story/how-we-work/sustainability)

CREATING OPPORTUNITIES



Despite the challenges of the past year, we've been proud to have continued working with our cultural and innovation partners to deliver a successful East Summer School programme for local young people – this time held online.

Overall, 270 participants, nearly all young people from the local boroughs of Hackney, Newham, Tower Hamlets and Waltham Forest, took part in the free programme, with 37 varied courses held across three weeks.

The programme was designed to offer something for everyone, from project management and presentation skills to coding, dance, fashion and film-making.

As well as being an opportunity to learn something new, the courses offered a sense of connection during what's been a particularly unsettling time. Kelis, 16, from Hackney, said: "It was really hard when schools just ended and being in Year 11 I will never go back, so it was nice to be

GLOWING REPORT FOR EAST SUMMER SCHOOL AFTER PROGRAMME MOVES ONLINE

able to meet new people through East Summer School. I learnt a lot about future careers and the fact that I can have multiple job roles in the future – it has inspired me to work harder and to do things that I am passionate about."

Read more about the courses run by our East Bank partners in the supplement, or visit [QueenElizabethOlympicPark.co.uk/SummerSchool](https://www.queenelizabetholympicpark.co.uk/SummerSchool) to find out more about East Summer School.

FREE EMPLOYMENT AND SKILLS TRAINING WITH BIKEWORKS

After spending the months of lockdown supporting the local community through deliveries of food and medicines, Bikeworks has relaunched their popular Employment and Skills programme. The focus is on supporting people with disabilities, long-term health conditions and mental health support needs gain confidence and employability skills in a friendly and supportive environment. Courses are free for residents of Hackney, Newham, Tower Hamlets and Waltham Forest, and take place over three months with two sessions per week. Alongside important skills, such as teamwork, communication and health and safety, participants will also receive a Level 1 City and Guilds Employability Qualification upon successful completion.

Applications and referrals are open, contact manon.dolet@bikeworks.org.uk for more information.



PROFESSIONAL VOLUNTEERS PROVE GOOD MATCH TO LOCAL BUSINESSES

The Match – started in the early stages of lockdown by local skills-matching community Echo, in collaboration with Loughborough University London and other local partners – has connected more than 50 businesses and charities with volunteer support from furloughed professionals. The scheme provided much-needed support and capacity building during an extremely challenging time. One of the projects supported was CaribEats, a community-led initiative providing meals to people in need in Hackney. With the help of their Match volunteer, Catalina, the CaribEats team have successfully applied for a number of grants in order to help keep the project going at this crucial time. "Honestly, I couldn't have matched with someone better if I'd picked her myself!" said Alison from CaribEats. The experience was valuable for Catalina too, who said: "it was so empowering to use my skills on something so different yet so relevant."

Now that the initial furlough scheme is drawing to a close, The Match is taking a pause in its current format but the Echo team are continuing to run their skills exchange community. Find out more at [economyofhours.com](https://www.economyofhours.com)

Stay up to date with news and information:

Sign up to receive our regular e-newsletter at:
[QueenElizabethOlympicPark.co.uk/subscribe](https://www.queenelizabetholympicpark.co.uk/subscribe)



[facebook.com/queenelizabetholympicpark](https://www.facebook.com/queenelizabetholympicpark)



[@noordinarypark](https://twitter.com/noordinarypark)



[@queenelizabetholympicpark](https://www.instagram.com/queenelizabetholympicpark)



[youtube.com/legacycompany](https://www.youtube.com/legacycompany)